





m i k

eko





m i k

INFLUENCED BY CLASSIC MODERN EUROPEAN DESIGN, MIK COMBINES A THIN PROFILE AND CHANNEL STITCHING WITH TWO BACK HEIGHT OPTIONS TO FORM A PERFECT CONTEMPORARY OFFICE AND COLLABORATIVE SEATING GROUP. OPTIONS INCLUDE SLEEK POLISHED CHROME ARMS WITH UPHOLSTERED ARM CAPS OR ARMLESS AND SOPHISTICATED CHROME BASES WITH CASTERS OR STATIONARY GUIDES. THIS STELLAR MULTI-PURPOSE COLLECTION BLENDS STYLISH FLARE AND FUNCTION FOR TODAY'S ACTIVE WORKSPACE ENVIRONMENTS.

SHOWN ABOVE AND RIGHT IN CONNEAUT LEATHER ROMA 8979 CREMA. SHOWN ON COVER IN CONNEAUT LEATHER DAVENPORT 1112 BLACK.



MID BACK WITH ARMS MIK8
W 26.5 D 24 H 35-37.5
ARMLESS MID BACK MIK7



LOW BACK ARMLESS MIK5
SHOWN WITH OPTIONAL GLIDE BASE
W 22 D 24 H 31-36.5
LOW BACK WITH ARMS MIK6





m i k

SOLUTIONS IN CONTRACT DESIGN



145 RYMER ROAD, NE
CLEVELAND, TN 37323

VOICE 866 814 860
866 814 8356

FAX 615 676 4861

EMAIL sales@ekocontract.com

WEB ekocontract.com

m i l o



eko





SWIVEL M3
w 28 D 28 H 40-44



SWIVEL M2
w 26 D 28 H 40-44



m i l o

SOLUTIONS IN CONTRACT DESIGN

MIL0 DELIVERS COMFORT, PERFORMANCE, AND FUNCTION TO TODAY'S BUSY WORK SPACES. SOFTLY CONTOURED VISCOELASTIC CUSHIONING ALLOWS FOR LASTING SUPPORT AND DAY-LONG COMFORT. KNEE-TILT TECHNOLOGY LETS USERS LEAN BACK WITHOUT REDUCING LEG CIRCULATION. A PNEUMATIC LIFT, TILT TENSION, TILT LOCK, AND WATERFALL FRONT SEAT EDGE PROMOTES CONTINUOUS BODY MOVEMENT. OPTIONS INCLUDE ADJUSTABLE T-ARM OR FIXED LOOP ARM AND HIGH-RISE BASE IN CHROME OR BLACK RESIN.

SHOWN ABOVE IN CONNEAUT LEATHER DAVENPORT 1112 BLACK.
SHOWN ON COVER IN CONNEAUT LEATHER SHOWCASE 8784 LIME ICE.



1815 BLYTHE AVENUE
CLEVELAND, TN 37311

VOICE 866 814 8600

866 814 8356

FAX 615 676 4861

EMAIL sales@ekocontract.com

WEB ekocontract.com



a r k e t a

eko





GUEST A1231
w 23 d 23.75 h 33.5



GUEST A1211
w 23 d 23.75 h 33.5



GUEST A1221
w 23 d 23.75 h 33.5

a r k e t a

SOLUTIONS IN CONTRACT DESIGN

ARKETA COMBINES CLEAN LINES WITH COMFORT AND STABILITY FOR A VERSATILE, GO ANYWHERE GUEST CHAIR. THE OUTWARD ARC OF THE ARMS AND LEGS AND COMFORTABLE, FULL-SCALE PROPORTIONS MAKES THIS A COMPELLING FORM FOR TRANSITIONAL OR CONTEMPORARY ENVIRONMENTS. THREE BACK DESIGN OPTIONS: HORIZONTAL SLAT, HALF UPHOLSTERED, AND FULLY UPHOLSTERED, ENHANCE AREKETA'S DESIGN FLEXIBILITY.

DESIGNED BY JOHN STAFFORD/CHRIS CARTER.

SHOWN ABOVE IN TEXTUS MICA 101 ELEPHANT IN LIGHT MAPLE FINISH.
SHOWN ON COVER IN TEXTUS MICA 101 ELEPHANT IN CINNAMON CHERRY FINISH.



1815 BLYTHE AVENUE
CLEVELAND, TN 37311

VOICE 866 814 8600
866 814 8356

FAX 615 676 4861

EMAIL sales@ekocontract.com

WEB ekocontract.com

c a y m a n

eko





C A Y M A N

CAYMAN COMBINES AN ENTICING MIX OF MATERIALS TO CREATE A STREAMLINED, MODERN GUEST CHAIR THAT IS EXCEPTIONALLY COMFORTABLE AND STYLISH. FULLY UPHOLSTERED FLARED BACKS AND CURVED WATERFALL SEATS OFFER GENEROUS SUPPORT WHILE SEATED. TWO ARM OPTIONS: WOOD OR BLACK POLYURETHANE AND TWO FRAME COLORS: BLACK OR BRUSHED ALUMINUM ENHANCE CAYMAN'S DESIGN FLEXIBILITY FOR UTILITARIAN APPLICATIONS.

DESIGNED BY JOHN STAFFORD/CHRIS CARTER.

SHOWN ABOVE IN MAHARAM FLUCTUATE 004 BLUESTEEL AND RIGHT IN MAHARAM VOYAGE 024 LEAD IN LIGHT MAPLE FINISH.
SHOWN ON COVER IN MAHARAM FLUCTUATE 004 BLUESTEEL AND MAHARAM VOYAGE 024 LEAD IN LIGHT MAPLE FINISH.



WOOD ARM GUEST C1236
w 28 d 25 h 34

BLACK POLYURETHANE ARM GUEST C1235



WOOD ARMS



BLACK POLYURETHANE ARMS



c a y m a n

SOLUTIONS IN CONTRACT DESIGN



145 RYMER ROAD, NE
CLEVELAND, TN 37323

VOICE 866 814 8600
866 814 8356

FAX 615 676 4861

EMAIL sales@ekocontract.com

WEB ekocontract.com

p o s h

eko





GUEST P1051
 W 23.75 D 23 H 32.75



p o s h

SOLUTIONS IN CONTRACT DESIGN

POSH EMBODIES THOUGHTFUL DESIGN AND IMPECCABLE CRAFTSMANSHIP FOR A COMFORTABLE, FULL-SCALE GUEST CHAIR WITH REFRESHING REFINEMENT THAT IS SURE TO BECOME A CLASSIC IN TRANSITIONAL AND CONTEMPORARY ENVIRONMENTS. A GRACEFUL, SCULPTED SOLID WOOD FRAME WITH SIGNATURE ARC-BACK SLATS AND OVAL CUT OUT, SHOWCASES THE BEAUTY OF EXCEPTIONAL DETAILING EXECUTED FLAWLESSLY.

DESIGNED BY JOHN STAFFORD/CHRIS CARTER.

SHOWN ABOVE IN MOMENTUM SMART SUEDE SALT IN LIGHT MAPLE FINISH.
 SHOWN ON COVER IN MOMENTUM SMART SUEDE SALT IN EBONY WALNUT FINISH.



1815 BLYTHE AVENUE
 CLEVELAND, TN 37311

VOICE 866 814 8600
 866 814 8356
 FAX 615 676 4861
 EMAIL sales@ekocontract.com
 WEB ekocontract.com

z o i

eko





Z O I

ZOI'S HORIZONTAL FORM AND STRIKING PROFILE IS FUSED TOGETHER WITH EXPERT DESIGN DETAILING TO CREATE A STUNNING AND CLASSIC GUEST SEATING COLLECTION WITH APPLICATION VERSATILITY. SOPHISTICATED CRAFTSMANSHIP IS EXPRESSED WITH THREE BACK OPTIONS THAT INCLUDE A WOOD WITH VERTICAL SLIT, FINISHED WOVEN CANE, OR HALF UPHOLSTERED.

DESIGNED BY JOHN STAFFORD/CHRIS CARTER.

SHOWN ABOVE IN ARCCOM BAMBOO HAZEL 4 AND RIGHT IN MOMENTUM LUXE SESAME IN APPALACHIAN MAHOGANY FINISH.
SHOWN ON COVER IN MOMENTUM LUXE SESAME IN LIGHT MAPLE FINISH.



GUEST Z1010
w 23.25 d 23 h 32



GUEST Z1012
w 23.25 d 23 h 32



GUEST Z1013
w 23.25 d 23 h 32



Z O I

SOLUTIONS IN CONTRACT DESIGN



1815 BLYTHE AVENUE
CLEVELAND, TN 37311

VOICE 866 814 8600
866 814 8356

FAX 615 676 4861

EMAIL sales@ekocontract.com

WEB ekocontract.com



bello modular lounge

eko



bello modular lounge



geometric freedom

INSPIRED BY THE GEOMETRIC FREEDOM OF NATURAL CURVES, BELLO UNIFIES CONTEMPORARY FORMS TO CREATE ORGANIC FUNCTION IN OPEN PLAN LOUNGE ENVIRONMENTS. A VARIETY OF INTERCHANGEABLE COMPONENTS ARRANGE INTO STRIKING CONFIGURATIONS FOR CORPORATE, HEALTHCARE AND EDUCATIONAL LOUNGE AND COLLABORATIVE SPACES. A SLEEK EUROPEAN STYLE SATIN NICKEL LEG AND OPTIONAL TABLET ATTACHMENT COMPLETE THE BELLO COLLECTION.

DESIGNED BY IOI.

SHOWN ABOVE IN LOOMSOURCE PARADOX MERCURY AND BOURBON MAHOGANY FINISH.

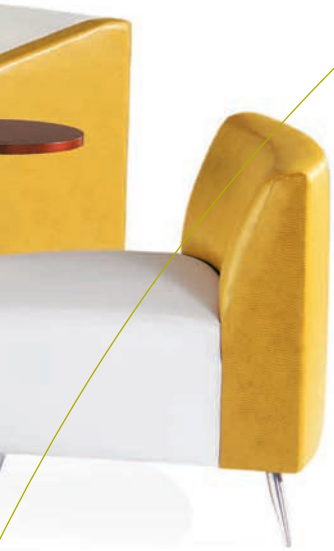




versatile modularity

ARM, ARMLESS, BENCH, AND TABLE COMPONENTS DESIGNED IN 30-DEGREE, 45-DEGREE AND 90-DEGREE INCREMENTS SATISFY THE REQUIREMENTS FOR VERSATILE SPACE PLANNING. CHOOSE CONTRASTING TEXTILES TO ADD INTEREST AND DEPTH. TABLE TOPS ARE AVAILABLE WITH WOOD OR LAMINATE TOPS.

SHOWN ABOVE IN MAHARAM PEEP 009 SUNBURST AND BOURBON MAHOGANY FINISH. SHOWN RIGHT TOP IN LODMSOURCE SOUL WISH AND RIGHT BOTTOM IN ARCCOM RADIANT AC-69281 GOLDENROD 2 AND BOURBON MAHOGANY FINISH.





BELLO MODULAR COMPONENTS

STRAIGHT SEAT COMPONENTS



30° INSIDE SEAT COMPONENTS



30° OUTSIDE SEAT COMPONENTS



BENCHES (UPHOLSTERED)



OTTOMAN



TABLES (WOOD OR LAMINATE TOPS)



DETAILS



14" ROUND TABLE
AVAILABLE ON NON-ARMED
SEATING SIDES OR ARMLESS
VERSIONS ONLY

EUROPEAN STYLE LEGS
AVAILABLE IN SATIN NICKEL
METAL FINISH





bello modular lounge

SOLUTIONS IN CONTRACT DESIGN



145 RYMER ROAD, NE
CLEVELAND, TN 37323

VOICE 866 814 860
866 814 8356

FAX 615 676 4861

EMAIL sales@ekocontract.com

WEB ekocontract.com

dax lounge

eko





LOVESEAT (BUTTON BACK) 33182
W 56.5 D 32 H 32.5

CLUB CHAIR (BUTTON BACK) 33181
W 33 D 32 H 32.5

ALSO AVAILABLE
SOFA (BUTTON BACK) 33183
W 78.5 D 32 H 32.5

dax lounge

DAX LOUNGE COLLECTION DEFINES UNDERSTATED SOPHISTICATION WITH SVELTE LINES AND SMART DETAILING. EXPERTLY TAILORED UPHOLSTERY OFFERS SOFT, GENEROUS COMFORT AND A CLEAN, GRACEFUL PROFILE. FLARED WOOD LEGS AND A CHOICE OF TWO BACK STYLES, BUTTON OR PLAIN, ADDS WINNING VERSATILITY FOR CORPORATE, HEALTHCARE, AND EDUCATIONAL SEATING ENVIRONMENTS.

DESIGNED BY JOHN STAFFORD/CHRIS CARTER.

SHOWN IN MAHARAM LARIAT 013 IVORY AND EBONY WALNUT FINISH.



CLUB CHAIR (PLAIN BACK) 33081
w 33 d 32 h 32.5

ALSO AVAILABLE
LOVESEAT (PLAIN BACK) 33082
w 56.5 d 32 h 32.5

SOFA (PLAIN BACK) 33083
w 78.5 d 32 h 32.5



BUTTON BACK



PLAIN BACK



dax lounge

SOLUTIONS IN CONTRACT DESIGN



145 RYMER ROAD, NE
CLEVELAND, TN 37323

VOICE 866 814 8600
866 814 8356

FAX 615 676 4861

EMAIL sales@ekocontract.com

WEB ekocontract.com

enzo lounge

eko





enzo lounge

ENZO LOUNGE OFFERS TIMELESS APPEAL WITH GENTLE FLOWING LINES AND PERFECTLY POLISHED PROPORTIONS. THIS HANDSOME COLLECTION FEATURES STRIKING DETAILS LIKE SLOPED ARMS, FLARED WOOD FRONT ARM POSTS, TAILORED SIDE STITCHING, AND GRACEFUL TAPERED LEGS. ENZO'S TASTEFUL VERSATILITY MIXES WELL IN A VARIETY OF OFFICE, LOUNGE, AND RECEPTION APPLICATIONS.

SHOWN ABOVE IN MAHARAM SMALL DOT PATTERN ODS CHARCOAL IN CINNAMON CHERRY FINISH. SHOWN RIGHT AND FRONT AND BACK COVERS IN CONNEAUT LEATHER DAVENPORT DAV1112 BLACK IN BOURBON MAHOGBANY FINISH.



LOVESEAT 20642
w 60.75 d 30 h 31.75

CLUB CHAIR 20641
w 27.75 d 30 h 31.75

SOFA 20643 (SHOWN ON BACK)
w 73.25 d 30 h 31.75



e n z o l o u n g e

SOLUTIONS IN CONTRACT DESIGN



145 RYMER ROAD, NE
CLEVELAND, TN 37323

VOICE 866 814 8600
866 814 8356

FAX 615 676 4861

EMAIL sales@ekocontract.com

WEB ekocontract.com

h y p a t e l o u n g e

eko





LOVESEAT 32042
 W 57 D 31 H 35.5

CLUB CHAIR 32041
 W 35 D 31 H 35.5

SOFA 32043 (NOT SHOWN)
 W 72 D 31 H 35.5

h y p a t e l o u n g e

HYPATE LOUNGE FLAUNTS GRADEFUL CURVES, REFINED SHAPES, AND FLARED LINES FROM EVERY ANGLE IN A COLLECTION THAT SHOWCASES ATTENTION TO DETAILS. A CHOICE OF TWO BACK STYLES WITH HANDSOME HORIZONTAL OR TRANSITIONAL BISCUIT-TUFT STITCHING AND TWO ARM STYLES, FULLY UPHOLSTERED OR INSET WOOD, ADD TO HYPATE'S EXTREME VERSATILITY.

DESIGNED BY JOHN STAFFORD/CHRIS CARTER.



UNSURPASSED CRAFTSMANSHIP
 AND EXPERT TAILORING

SHOWN ABOVE IN CONNEAUT LEATHER SHOWCASE 8657 CREAM WITH META TABLE IN EBDNY WALNUT FINISH.
 SHOWN ON GATEFOLD IN MAHARAM PEBBLE WOOL 001 BIRCH IN LIGHT MAPLE FINISH.



LOVESEAT 32062
w 57 d 31 h 35.5

CLUB CHAIR 32051
w 35 d 31 h 35.5

SOFA 32053 (NOT SHOWN)
w 72 d 31 h 35.5



SHOWN ABOVE IN CONNEAUT LEATHER DAVENPORT 7349 WET SAND WITH META TABLE IN IMPERIAL CHERRY FINISH.



LOVESEAT 32062
w 57 d 31 h 35.5

CLUB CHAIR 32061
w 35 d 31 h 35.5

SOFA 32063 [NOT SHOWN]
w 72 d 31 h 35.5

ALSO AVAILABLE WITH WOOD ARM INSERT



SHOWN ABOVE IN CONNEAUT LEATHER SHOWCASE 7353 BONTON WITH META TABLE IN LIGHT MAPLE FINISH.





h y p a t e l o u n g e

SOLUTIONS IN CONTRACT DESIGN



1816 BLYTHE AVENUE
CLEVELAND, TN 37311

VOICE 866 814 8600

866 814 8356

FAX 615 676 4861

EMAIL sales@ekocontract.com

WEB ekocontract.com

h y p a t e t a b l e t

eko



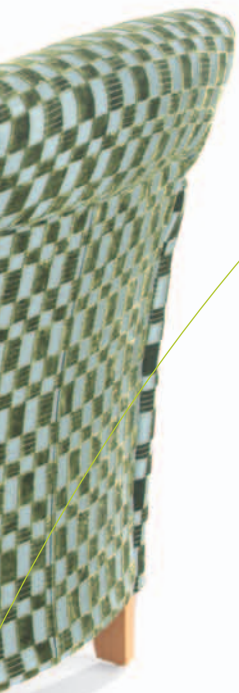


h y p a t e t a b l e t

HYPATE TABLET INTEGRATES STYLE, COMFORT, AND CONVENIENCE INTO CONFERENCE, TRAINING, AND LOUNGE AREAS FOR HIGH-FUNCTION MOBILE ENVIRONMENTS. TABLETS ARE GENEROUSLY SIZED TO SUPPORT PORTABLE TECHNOLOGY, PIVOT 360°, AND ARE AVAILABLE IN MAPLE VENEER OR BLACK LAMINATE. AN OPTIONAL POWER MINI-PORT® IS INSTALLABLE ON THE SAME SIDE AS TABLET FOR QUICK CONNECTIONS TO POWERED OFFICE TOOLS. OPTIONAL UNDERSEAT STORAGE SHELF IN MAPLE VENEER OR BLACK LAMINATE STOWS CARRY ALONGS EASILY. LEG OPTIONS INCLUDE: ALL MAPLE LEGS, CASTERS IN FRONT AND MAPLE LEGS IN BACK, OR ALL CASTERS.

DESIGNED BY JOHN STAFFORD/CHRIS CARTER.

SHOWN ABOVE IN TEXTUS SPLENDEUR 509 SEAFOAM AND RIGHT IN CONNEAUT LEATHER SHOWCASE 8782 SEAFOAM IN LIGHT MAPLE FINISH. SHOWN ON COVER IN CONNEAUT LEATHER SHOWCASE 8782 SEAFOAM IN EBONY WALNUT FINISH.



CLUB WITH TABLET 32036
w 29.75 d 30 h 34.25



ARMLESS WITH TABLET 32035
w 26 d 30.5 h 34.25
(SHOWN WITH BLACK LAMINATE TABLET)



ARMLESS 32035
w 26 d 30.5 h 34.25



DATA, VOICE, AND POWER MINI-PORT®

UNDERSEAT STORAGE SHELF





h y p a t e t a b l e t

SOLUTIONS IN CONTRACT DESIGN



1816 BLYTHE AVENUE
CLEVELAND, TN 37311

VOICE 866 814 8600
866 814 8356

FAX 615 676 4861

EMAIL sales@ekocontract.com

WEB ekocontract.com

m a c h i l o u n g e

eko





LOVESEAT 32182
w 56.5 d 32 h 32.5

CLUB CHAIR 32181
w 33 d 32 h 32.5

SOFA 32053 [NOT SHOWN]
w 78.5 d 32 h 32.5

m a c h i l o u n g e

MACHI LOUNGE OFFERS CLEAN SHAPES AND UNCOMPLICATED LINES IN THIS SIMPLE, EXQUISITELY TAILORED COLLECTION. THE STRAIGHT-FORWARD DESIGN MIXES TASTEFULLY IN A VARIETY OF ENVIRONMENTS AND IS PROPORTIONED FOR COMFORTABLE SITTING OR SOOTHING LOUNGING APPLICATIONS. A CHOICE OF TWO LEG STYLES, BRUSHED ALUMINUM OR WOOD ADD TO MACHI'S VERSATILITY.

DESIGNED BY JOHN STAFFORD/CHRIS CARTER.

SHOWN ABOVE IN CONNEAUT LEATHER DAVENPORT 1112 BLACK AND RIGHT IN MAHARAM DANDY 004 CHARCOAL IN ROYAL MAHOGANY FINISH.



LOVESEAT 32082
w 66.5 d 32 h 32.5

CLUB CHAIR 32081
w 33 d 32 h 32.5

SOFA 32083 (NOT SHOWN)
w 78.5 d 32 h 32.5





m a c h i l o u n g e

SOLUTIONS IN CONTRACT DESIGN



1816 BLYTHE AVENUE
CLEVELAND, TN 37311

VOICE 866 814 8600

866 814 8356

FAX 615 676 4861

EMAIL sales@ekocontract.com

WEB ekocontract.com

machi e collaborative

eko





CLUB CHAIR WITH WOOD FEET 32281
 (SHOWN WITH OPTIONAL WOOD ARMS)
 W 30 D 29.75 H 34.25



CLUB CHAIR WITH METAL FEET 32381
 (SHOWN WITH OPTIONAL CUP HOLDER)
 W 30 D 29.75 H 34.25



CLUB CHAIR
 (SHOWN WITH OPTIONAL CASTERS,
 BACK HANDLE AND OVAL TABLET)

machi 2 collaborative

SOLUTIONS IN CONTRACT DESIGN

MACHI 2 COLLABORATIVE OFFERS CLEAN SHAPES AND UNCOMPLICATED LINES IN THIS SIMPLE, YET TASTEFULLY, TAILORED COLLECTION. PROPORTIONED FOR FOR COMFORTABLE LOUNGE OR COLLABORATIVE SEATING AREAS, MACHI 2 FEATURES BRUSHED ALUMINUM, WOOD OR CASTER LEG OPTIONS AND FULLY UPHOLSTERED OR WOOD ARM CAP ARM OPTIONS. CUP HOLDERS AND WOOD OR LAMINATE TABLET ARMS WITH 360° ROTATION ADD TO THIS COLLECTIONS VERSATILITY.

DESIGNED BY JOHN STAFFORD/CHRIS CARTER.

SHOWN ABOVE LEFT IN ARC COM MATRIX CHARCOAL AC-68661 IN LIGHT MAPLE FINISH.
 SHOWN ABOVE RIGHT IN DESIGN TEX SALVAGE BLACK CURRANT 2867-8010.



1815 BLYTHE AVENUE
 CLEVELAND, TN 37311

VOICE 866 814 86KO

866 814 8356

FAX 615 676 4861

EMAIL sales@ekocontract.com

WEB ekocontract.com

mod lounge

eko



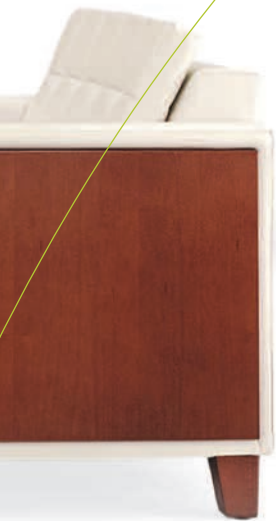
mod freestanding



MOD IS AN EXPANSIVE FREESTANDING AND MODULAR LOUNGE COLLECTION CHARACTERIZED BY STRONG ARCHITECTURAL SIMPLICITY, TAILORED FORM-FITTING UPHOLSTERY, AND A MULTITUDE OF CLEANLY CONSTRUCTED COMPONENTS. A GENEROUS SCALE AND STYLISH INTERACTION CELEBRATE CONTEMPORARY AESTHETICS AND FUNCTION. CRISP BISCUIT-TUFTED OR PLAIN DOWN-FILLED SEAT AND BACK CUSHIONS EASILY ADAPT TO A VARIETY OF ENVIRONMENTS. A THOUGHTFULLY DESIGNED WOOD PANEL OUTER ARM OPTION, FOR FREESTANDING LOUNGE MODELS, ADDS POLISHED SOPHISTICATION AND FINESSE. AVAILABLE WITH WOOD OR SATIN NICKEL METAL LEGS.

DESIGNED BY IOI.

SHOWN ABOVE AND RIGHT IN MOMENTUM FORAY CANVAS AND CINNAMON CHERRY FINISH.



CLUB CHAIRS SHOWN WITH BISCUIT TUFT UPHOLSTERY.
SPECIFY OPTIONAL CASTERS AND TABLE FOR COLLABORATIVE AREAS.
SOFA AND LOVESEAT ALSO AVAILABLE.



CLUB CHAIRS SHOWN WITH PLAIN DOWN-FILLED CUSHION
UPHOLSTERY AND WOOD PANEL OUTER ARM OPTION.
SOFA AND LOVESEAT ALSO AVAILABLE.

UPHOLSTERY OPTIONS
BISCUIT-TUFT
PLAIN DOWN-FILLED CUSHIONS

OUTER ARM OPTIONS
UPHOLSTERED
WOOD PANEL

LEG OPTIONS
FOUR WOOD LEGS
FOUR SATIN NICKEL METAL LEGS
FOUR CASTERS



OPTIONAL ARTICULATING OVAL
OR CIRCLE TABLE ROTATES 360°



OPTIONAL CUP HOLDER
(BLACK OR WHITE)

mod armless



COMBINE ARMLESS MOD COMPONENTS TO CREATE A COMPLETE AND UNIFORM ATMOSPHERE FOR AN ENTIRE FACILITY INSTALLATION. UTILIZE 10-INCH WIDE STRAIGHT, 30-DEGREE, 45-DEGREE, AND 60-DEGREE VENEER OR UPHOLSTERED CONNECTING ARMS TO DEFINE INDIVIDUAL SEATING AREAS AND CREATE CURVILINEAR OPEN PLAN CONFIGURATIONS. TRANSFORM COLLABORATIVE MEETING AREAS WITH THE ADDITION OF A TABLET POLE, CASTERS, AND POWER OPTION FOR EFFICIENT COMFORT AND FUNCTION WHILE WAITING OR WORKING.

SHOWN ABOVE AND BOTTOM RIGHT IN DESIGN TEX CONVERGE CANE SUGAR AND LIGHT MAPLE FINISH. SHOWN ABOVE RIGHT IN MOMENTUM FORAY CANVAS AND LIGHT MAPLE FINISH.



COMBINE OPPOSING BACK ARMLESS UNITS TO ACCOMMODATE MULTI-DIRECTIONAL SEATING ACCESS IN OPEN PLAN ENVIRONMENTS.



SPECIFY ONE-SEAT ARMLESS MODELS WITH OPTIONAL CASTERS AND TABLE POLE FOR COLLABORATIVE AREAS. OPTIONAL POWER PORT AVAILABLE.

UPHOLSTERY OPTIONS
 BISCUIT-TUFT
 PLAIN

TABLET OPTIONS
 OVAL TABLET POLE
 CIRCLE TABLET POLE

LEG OPTIONS
 FOUR WOOD LEGS
 FOUR SATIN NICKEL METAL LEGS



60° 10-INCH CONNECTOR ARM
 [VENEER OR UPHOLSTERED]



30° 10-INCH CONNECTOR ARM
 [VENEER OR UPHOLSTERED]



10-INCH CONNECTOR ARM
 [VENEER OR UPHOLSTERED]

mod bench



MODULAR BENCHES COMPLETE THE MOD LOUNGE COLLECTION AND WILL SATISFY THE REQUIREMENTS OF ANY SPACE PLANNING ENDEAVOR. COMBINE HALF-ROUND, 30-DEGREE, 45-DEGREE, AND 60-DEGREE VENEER OR LAMINATE CONNECTING TABLES AND ONE, TWO, THREE, AND HALF-ROUND SEAT BENCH UNITS TO CREATE SERPENTINE, CIRCULAR, OR STRAIGHT SOLUTIONS FOR OPEN PLAN CONFIGURATIONS.

SHOWN ABOVE IN MAHARAM PERIPHERY 001 ALABASTER AND EBONY WALNUT FINISH. SHOWN RIGHT IN MOMENTUM FORAY CANVAS AND EBONY WALNUT FINISH.



AN OPEN PLAN MODULAR ISLAND CONFIGURATION ALLOWS FOR MULTI-DIRECTIONAL SEATING ACCESS. HALF ROUND BENCHES NICELY CAP ENDS FOR CONTINUOUS FLOW.



ONE, TWO, AND THREE SEAT FREESTANDING BENCHES ARE AVAILABLE WITH PLAIN OR BISCUIT-TUFT UPHOLSTERY OPTIONS.

UPHOLSTERY OPTIONS
BISCUIT-TUFT
PLAIN

TABLET OPTIONS
OVAL TABLET POLE
CIRCLE TABLET POLE

LEG OPTIONS
FOUR WOOD LEGS
FOUR SATIN NICKEL METAL LEGS



60° CONNECTOR TABLE
(VENEER OR LAMINATE)



30° CONNECTOR TABLE
(VENEER OR LAMINATE)



ONE SEAT BENCH OPTIONS:
FOUR CASTERS
POWER PORT
TABLET POLE



mod lounge

SOLUTIONS IN CONTRACT DESIGN



145 RYMER ROAD, NE
CLEVELAND, TN 37323

VOICE 866 814 860
866 814 8356

FAX 615 676 4861

EMAIL sales@ekocontract.com

WEB ekocontract.com

n i k o l o u n g e

eko





n i k o l o u n g e

NIKO LOUNGE OFFERS ALLURING STYLE WITH SOFT INVITING SHAPES THAT ENVELOP CASUAL RELAXATION. SCULPTURAL PILLOW-TOP ARMS ENSURE COMFORT WHILE PROVIDING A STYLIZED TAILORING STATEMENT. FOR ADDED UPHOLSTERY PIZAZZ, SELECT A CONTRASTING FABRIC FOR THE SEAT, INNER LOWER BACK, AND PILLOW-TOP ARMS.

DESIGNED BY JOHN STAFFORD/CHRIS CARTER.

SHOWN ABOVE IN MAHARAM HOBNAIL WOOL 001 BRECKNOCK WITH CONTRASTING UPHOLSTERY IN CONNEAUT LEATHER SHOWCASE 8667 CREAM IN EBONY WALNUT FINISH. SHOWN RIGHT IN CONNEAUT LEATHER SHOWCASE 7353 BONTON IN EBONY WALNUT FINISH.



LOVESEAT 32102
w 66.5 d 32 h 32.5

CLUB CHAIR 32101
w 33 d 32 h 32.5

SOFA 32103 [NOT SHOWN]
w 78.5 d 32 h 32.5

ALSO AVAILABLE WITH CONTRASTING UPHOLSTERY





n i k o l o u n g e

SOLUTIONS IN CONTRACT DESIGN



1815 BLYTHE AVENUE
CLEVELAND, TN 37311

VOICE 866 814 8800

866 814 8356

FAX 615 676 4861

EMAIL sales@ekocontract.com

WEB ekocontract.com

nv lounge

eko



nv



LOVESEAT (SATIN NICKEL BACK DETAIL) 34282
w 57.5 d 32 h 32.5

ALSO AVAILABLE
LOVESEAT (PLAIN BACK) 34182

CLUB CHAIR (SATIN NICKEL BACK DETAIL) 34281
w 34 d 32 h 32.5

ALSO AVAILABLE
CLUB CHAIR (PLAIN BACK) 34181

SOFA (SATIN NICKEL BACK DETAIL) 34283
SOFA (PLAIN BACK) 34183
w 79.5 d 32 h 32.5

nv lounge

NV AND NV SIMPLEX LOUNGE COLLECTIONS TOUT TIMELESS SIMPLICITY WITH MINIMALIST APPEAL. BOTH COLLECTIONS ARE EXPERTLY CONSTRUCTED WITH EXACTING DETAILS AND MAKE TASTEFUL COMPANIONS FOR CORPORATE, HEALTHCARE, AND EDUCATIONAL SEATING ENVIRONMENTS.

THE NV LOUNGE COLLECTION FEATURES A MODERNIST SATIN NICKEL METAL PLATFORM BASE WITH METAL LEGS AND CHOICE OF RECTANGULAR INSET SATIN NICKEL BACK DETAIL OR PLAIN BACK.

THE NV SIMPLEX LOUNGE COLLECTION FEATURES HANDSOME SATIN NICKEL CYLINDER LEGS WITH A PLAIN UPHOLSTERED BACK.

DESIGNED BY JOHN STAFFORD/CHRIS CARTER.

SHOWN IN MAHARAM LARIAT 013 IVORY.

nv simplex



CLUB CHAIR 34081
w 34 d 32 h 32.5

ALSO AVAILABLE
LOVESEAT 34082
w 57.5 d 32 h 32.5

SOFA 34083
w 79.5 d 32 h 32.5



nv lounge

SOLUTIONS IN CONTRACT DESIGN



145 RYMER ROAD, NE
CLEVELAND, TN 37323

VOICE 866 814 8600

866 814 8356

FAX 615 676 4861

EMAIL sales@ekocontract.com

WEB ekocontract.com

reed lounge

eko





reed lounge

REED LOUNGE EXUDES MODERN SOPHISTICATED AND BRINGS LOBBY ENVIRONMENTS TO FLIRTATIOUS LIFE. A CAREFULLY PLANNED COMPOSITION OF PROPORTIONS AND GENTLE ARCS PROVIDE THE FOUNDATION FOR THIS CONTEMPORARY, RELAXED, AND COMFORTABLE LOUNGE COLLECTION. THE PRECISELY UPHOLSTERED PUZZLE-FIT OUTSIDE BACK AND LAYERED PILLOW-TOP INSIDE BACK ADD THE LIVELY DETAILS THAT UNIFY THIS SLEEK DESIGN. FOR ADDED PIZAZZ SELECT A CONTRASTING TEXTILE FOR THE SEAT AND INSIDE/OUTSIDE BACKS.

DESIGNED BY JOHN STAFFORD/CHRIS CARTER.

SHOWN ABOVE IN CONNEAUT LEATHER SHOWCASE C08782 SEAFOAM WITH CONTRASTING UPHOLSTERY IN MAHARAM REPEAT DOT PIXEL 005 MIDNIGHT IN LIGHT MAPLE FINISH. SHOWN RIGHT IN CONNEAUT LEATHER SHOWCASE C07302 JET IN LIGHT MAPLE FINISH. SHOWN FRONT AND AND BACK COVERS IN CONNEAUT LEATHER SHOWCASE C07302 JET WITH CONTRASTING UPHOLSTERY IN CONNEAUT LEATHER SHOWCASE C08657 CREAM IN LIGHT MAPLE FINISH.



LOVESEAT 32022
w 49.5 d 30.5 h 32

CONTRASTING UPHOLSTERY LOVESEAT 32222

CLUB CHAIR 32021
w 26.75 d 30.5 h 32

CONTRASTING UPHOLSTERY CLUB CHAIR 32221

SOFA 32023
w 71.5 d 30.5 h 32

CONTRASTING UPHOLSTERY SOFA 32223 (SHOWN ON BACK)



reed lounge

SOLUTIONS IN CONTRACT DESIGN



1816 BLYTHE AVENUE
CLEVELAND, TN 37311

VOICE 866 814 8600
866 814 8356

FAX 615 676 4861

EMAIL sales@ekocontract.com

WEB ekocontract.com

stratos modular lounge

eko





stratos modular lounge

EXTREME DESIGN VERSATILITY AND MAXIMUM COMFORT IS THE CONCEPT BEHIND THIS SLEEK, UNIFIED MODULAR SEATING SOLUTION FOR INTERIORS LARGE AND SMALL. ONE, TWO, AND THREE SEAT COMPONENTS ARE AVAILABLE WITH OR WITHOUT ARMS, OR IN LEFT OR RIGHT ARMS OR TABLET COMBINATIONS. THREE SIZES OF OTTOMAN TABLES COMPLETE THE COLLECTION AND OFFER WOOD, LAMINATE, OR UPHOLSTERED TOP CHOICES. ALL PIECES CAN BE USED INDIVIDUALLY OR UNIQUELY GROUPED IN A MULTITUDE OF CONFIGURATIONS. THE CLIPPED CORNER OTTOMAN FORMS FLUSH 90° TURNS AND CONTINUES INSIDE OR OUTSIDE CORNERS WITH A CLEAN LINE. ALUMINUM LEGS ADD SUPPORT AND ACCENT THE SIMPLE UPHOLSTERY SHAPES TO FINISH THE DESIGN.

DESIGNED BY JOHN STAFFORD/CHRIS CARTER.

SHOWN ABOVE IN MAHARAM PRECISELY 003 CHARCOAL IN LIGHT MAPLE FINISH. SHOWN RIGHT IN MOMENTUM NOTION OBSIDIAN IN LIGHT MAPLE FINISH.





stratos modular lounge

CREATE LASTING IMPRESSIONS IN LOBBY OR LOUNGE SETTINGS BY INCORPORATING DYNAMIC FABRIC PATTERNS INTO THE ENVIRONMENT. THE GEOMETRIC SHAPES OF THE STRATOS COLLECTION LEND THEMSELVES NICELY TO TAILORED STRIPES OR BOLD PATTERNS WHILE STILL HAVING THE STAYING POWER TO LOOK ELEGANT IN A SUBTLE SOLID. A TABLET ARM OPTION AND OPTIONAL POWER SOURCE ALLOWS WAITING AREAS TO BECOME EFFICIENT SPACES FOR READING, WRITING AND WORKING.

SHOWN ABOVE IN MAHARAM REPEAT CLASSIC STRIPE 001 INCA IN EBONY WALNUT FINISH. SHOWN RIGHT IN CONNEAUT LEATHER SHOWCASE C07S75 GREIGE IN EBONY WALNUT FINISH.





ARMLESS CLUB WITH TABLE 32111/STPWR
w 22.25 d 33 h 34

stratos collaborative

STRATOS COLLABORATIVE SEATING INTEGRATES AESTHETICS AND FUNCTION FOR PROGRESSIVE CONFERENCE, TRAINING, AND LOUNGE ENVIRONMENTS. OVAL TABLES PIVOT 360° AND ARE GENEROUSLY SIZED TO SUPPORT PORTABLE TECHNOLOGY. AN OPTIONAL POWER SOURCE WITH SECURE ETHERNET PORT IS AVAILABLE ON ARMLESS SEATING SIDES OR OTTOMAN TABLE FRONTS. LEG OPTIONS INCLUDE: ALL ALUMINUM LEGS, FRONT CASTERS AND BACK ALUMINUM LEGS, OR ALL CASTERS. CASTER MODELS INCLUDE AN ALUMINUM BACK PULL FOR EASE OF MOBILITY.

SHOWN ABOVE IN TEXTUS LOUPE 303 CHARCOAL IN LIGHT MAPLE FINISH. SHOWN RIGHT IN MOMENTUM NOTION
OBSIDIAN IN LIGHT MAPLE FINISH.

STRATOS MODULAR COMPONENTS

ARMLESS COMPONENTS



ARM COMPONENTS



RIGHT ARM COMPONENTS



LEFT ARM COMPONENTS



FULLY UPHOLSTERED OTTOMANS



WOOD OR LAMINATE TOP OTTOMANS



WOOD TABLET



BLACK LAMINATE TABLET



stratos modular lounge

SOLUTIONS IN CONTRACT DESIGN



145 RYMER ROAD, NE
CLEVELAND, TN 37323

VOICE 866 814 8600
866 814 8356

FAX 615 676 4861

EMAIL sales@ekocontract.com

WEB ekocontract.com

sutton collaborative

eko





sutton collaborative

SUTTON COLLABORATIVE OFFERS MODERN APPEAL WITH CLEAN LINES, PERFECT PROPORTIONS, AND UNMATCHED COMFORT. THIS SLEEK COLLECTION FEATURES CURVED ARMS AND BACKS TO ACCEPT LARGER USERS WHILE STILL MAINTAINING A SMALL FOOTPRINT. SWIVEL CLUB CHAIRS FEATURE 360° ROTATION ON GLIDES ALLOWING USERS TO COLLABORATE WITH COLLEAGUES FROM ANY ANGLE. ADD CASTERS FOR EASY MOBILITY IN LEARNING ALCOVES OR CORPORATE BREAK-OUT SESSIONS. SUTTON'S OPTIONS INCLUDE A STATIONARY WOOD FEET CLUB CHAIR, CUP HOLDERS, AND PATENTED FLIP-DOWN FIXED TABLET ARM THAT FOLDS AWAY WHEN NOT IN USE AND ALLOWS EASY CHAIR EXIT. SUTTON'S OUTSTANDING VERSATILITY MAKES IT A MUST FOR CORPORATE, LOUNGE, RECEPTION, AND EDUCATIONAL ENVIRONMENTS.

SHOWN ABOVE IN HBF HEARTFELT 828-10 ENOKI IN LIGHT MAPLE FINISH.
SHOWN RIGHT AND FRONT AND BACK COVERS IN HBF LEATHER EQUESTRIAN 705-20 J00HPUR IN LIGHT MAPLE FINISH.



CLUB CHAIR WITH WOOD FEET 32031
W 30.25 D 19.25 H 35.5
ALSO AVAILABLE
360° SWIVEL CLUB CHAIR WITH GLIDES 32030



EIGHT HIDDEN CASTERS (OPTIONAL)
GIVE SUTTON A SLEEK, FLOATING
APPEARANCE. CASTERS PROVIDE
360° SWIVEL CAPABILITIES FOR
ADDED COMFORT AND ALLOW CHAIRS
TO EASILY ROLL ACROSS THE FLOOR.



FOR MORE STATIONARY APPLICATIONS
SPECIFY SUTTON WITH TWO WOOD
FRONT LEGS AND TWO BACK GLIDES.



ARTICULATING TABLET ROTATES 360°



OPTIONAL FIXED FLIP-DOWN TABLET



OPTIONAL NON-HANDED CUP HOLDER



sutton collaborative

SOLUTIONS IN CONTRACT DESIGN



145 RYMER ROAD, NE
CLEVELAND, TN 37323

VOICE 866 814 860
866 814 8356

FAX 615 676 4861

EMAIL sales@ekocontract.com

WEB ekocontract.com



f u s e

eko





CYLINDER TABLES

- DIA. 18 H 15
- DIA. 18 H 20
- DIA. 18 H 24
- DIA. 24 H 15
- DIA. 24 H 20
- DIA. 24 H 24
- DIA. 36 H 15
- DIA. 36 H 20
- DIA. 36 H 24

AVAILABLE WITH OPTIONAL
3-INCH OR 3/4-INCH
BLACK OR SILVER LAMINATE
RECESSED PLINTH BASE



CUBE TABLES

- W 18 D 18 H 15
- W 18 D 18 H 20
- W 18 D 18 H 24
- W 24 D 24 H 15
- W 24 D 24 H 20
- W 24 D 24 H 24
- W 36 D 36 H 15
- W 36 D 36 H 20
- W 36 D 36 H 24

3" RADIUS CUBE TABLES

- W 18 D 18 H 15
- W 18 D 18 H 20
- W 18 D 18 H 24
- W 24 D 24 H 15
- W 24 D 24 H 20
- W 24 D 24 H 24
- W 36 D 36 H 15
- W 36 D 36 H 20
- W 36 D 36 H 24

AVAILABLE WITH OPTIONAL
3-INCH OR 3/4-INCH
BLACK OR SILVER LAMINATE
RECESSED PLINTH BASE

f u s e

SOLUTIONS IN CONTRACT DESIGN

VENEER AND LAMINATE GEOMETRIC FORMS COMBINE WITH A MULTITUDE OF SIZE OPTIONS TO FORM A SIMPLISTIC TABLES COLLECTION FUSED WITH FUNCTIONALITY. FOR ADDED DIMENSION, SPECIFY WITH OPTIONAL 3-INCH OR 3/4-INCH BLACK OR CHROME LAMINATE RECESSED BASE. ALL TABLES STANDARD WITH BOTTOM GLIDES FOR EASE OF MOBILITY.

DESIGNED BY IDI.

SHOWN ABOVE AND ON COVER IN LIGHT MAPLE AND EBONY WALNUT FINISH.



1815 BLYTHE AVENUE
CLEVELAND, TN 37311

VOICE 866 814 86KO
866 814 8356

FAX 615 676 4861

EMAIL sales@ekocontract.com

WEB ekocontract.com

k l a s s

eko





ROUND MAGAZINE TABLE S3800
DIA. 39 H 16



ROUND END TABLE S2200
DIA. 20 H 24

k l a s s

SOLUTIONS IN CONTRACT DESIGN

KLASS EMPLOYS THE WARMTH OF WOOD TO COMPOSE A BEAUTIFULLY TAILORED TABLE COLLECTION WITH STRIKING SOPHISTICATION. REVERSE BOX PATTERN VENEER TOPS WITH SHAPELY TAPERED LEGS ADD SIMPLE ELEGANCE. THIS REFINED COLLECTION IS THE PERFECT COMPANION WITH EKO GUEST AND LOUNGE SEATING FOR OFFICE, LOBBY, AND RECEPTION AREAS.

DESIGNED BY JOHN STAFFORD/CHRIS CARTER.

SHOWN ABOVE AND COVER IN BOURBON MAHOGANY FINISH.



1815 BLYTHE AVENUE
CLEVELAND, TN 37311

VOICE 866 814 8800
866 814 8356
FAX 615 676 4861
EMAIL sales@ekocontract.com
WEB ekocontract.com

m e t a

eko

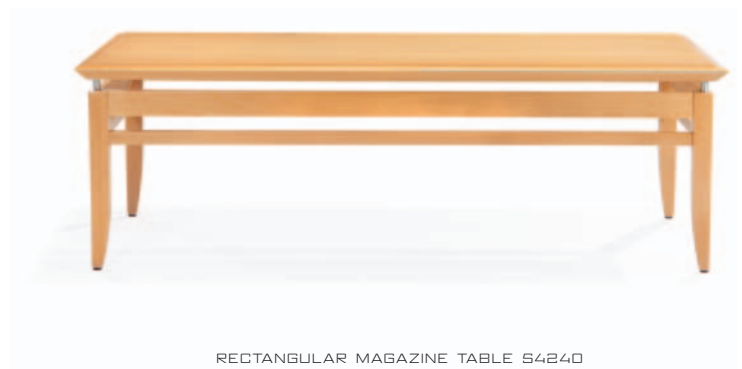




SQUARE END TABLE S4200
w 20 d 20 h 24



SQUARE MAGAZINE TABLE S4360
w 36 d 36 h 16



RECTANGULAR MAGAZINE TABLE S4240
w 50 d 24 h 16

m e t a

SOLUTIONS IN CONTRACT DESIGN

META CREATES A SLEEK ARCHITECTURAL PRESENCE BY COMBINING SOLID WOOD FRAMES, BEAUTIFUL VENEER TOPS, AND A PUNCTUATION OF SATIN NICKEL METAL THAT SUPPORTS ITS SIGNATURE FLOATING TOPS. THIS AIRY TABLE COLLECTION IS THE PERFECT COMPANION WITH EKO GUEST AND LOUNGE SEATING FOR TRANSITIONAL AND CONTEMPORARY OFFICE, LOBBY, AND RECEPTION AREAS.



1815 BLYTHE AVENUE
CLEVELAND, TN 37311

VOICE 866 814 86KO

866 814 8356

FAX 615 676 4861

EMAIL sales@ekocontract.com

WEB ekocontract.com

SHOWN ABOVE IN LIGHT MAPLE FINISH. SHOWN ON COVER IN EBONY WALNUT FINISH.

s y n t h

eko





SQUARE MAGAZINE TABLE WITH WOOD TOP SS37SQ/MV/S7
 W 37 D 37 H 16



ROUND END TABLE WITH GLASS TOP SS21R/FG
 DIA. 21 H 24



ROUND MAGAZINE TABLE WITH SOLID SURFACE TOP SS37R/SBW
 DIA. 37 H 16



SQUARE END TABLE WITH GLASS TOP SS21SQ/FG
 W 21 D 21 H 24

synth

SOLUTIONS IN CONTRACT DESIGN

SYNTH EXEMPLIFIES THE CRISP LINES OF GEOMETRIC FORMS AND THE SIMPLICITY OF MIXED MATERIALS IN THIS MODERN TABLE COLLECTION. CLEVER DETAILS LIKE VISIBLE METAL THROUGH SATIN-ETCHED GLASS AND MULTI-LEVEL TOPS ADD STUNNING VISUAL INTEREST. VENEER, LAMINATE, AND BRIGHT WHITE SOLID SURFACE MATERIALS SOFTEN THE METAL LINES FOR A PRISTINE, SUBTLE PROFILE. SYNTH IS THE PERFECT COMPANION FOR RECEPTION AND LOUNGE SEATING ENVIRONMENTS.

DESIGNED BY JOHN STAFFORD/CHRIS CARTER.



1815 BLYTHE AVENUE
 CLEVELAND, TN 37311

VOICE 866 814 86KO
 866 814 8356
 FAX 615 676 4861
 EMAIL sales@ekocontract.com
 WEB ekocontract.com



kardia collection

+eko
care

PUBLIC
LOUNGE
BARIATRIC
PATIENT
RECLINER
SLEEPER





PUBLIC



SINGLE
w 24 d 27 h 33.25



BARIATRIC
w 45 d 27 h 33.25
(SUPPORTS 750 LBS.)



TWO SEAT TANDEM
w 46.5 d 27 h 33.25



THREE SEAT TANDEM
w 69 d 27 h 33.25



SINGLE RIGHT STARTER
w 24 d 27 h 33.25



SINGLE MIDDLE
w 22.5 d 27 h 33.25
(HOLES IN LEFT SIDE)



SINGLE LEFT END
w 22.5 d 27 h 33.25
(FINISHED SIDE, NO HOLES)



INLINE TABLE
w 21 d 21 h 16



LEFT OR RIGHT END TABLE
w 21 d 21 h 16



OPEN WOOD
OPTIONS:
POLY ARM CAP

+EKOCARE FEATURES

BARIATRIC MODEL AVAILABLE
WALL SAVER LEGS
CLEAN-OUT SEAT
EKO GUARD® ANTI-MICROBIAL FINISH
MOISTURE BARRIER
REMOVABLE COVERS
FIELD REPLACEABLE COMPONENTS
STEEL SEAT AND BACK FRAME
SUPPORTS 350 LBS.
DURABLE METAL-TO-METAL CONNECTIONS
MOLDED SOY BASED BIO® FOAM
SEMI-FLEX COMFORT BACK
DURABLE LAMINATE TOPS
OPTIONAL PROTECTIVE ARM CAPS
LIFETIME WARRANTY



LOUNGE



ARMLESS CLUB
w 23.5 d 31.5 h 33.5



ARMLESS LOVESEAT
w 47 d 31.5 h 33.5



ARMLESS SOFA
w 70.5 d 31.5 h 33.5



CLUB
w 31 d 31.5 h 33.5



LOVESEAT
w 54.5 d 31.5 h 33.5



SOFA
w 78 d 31.5 h 33.5



TWO SEAT TANDEM
w 54.5 d 31.5 h 33.5



THREE SEAT TANDEM
w 85.5 d 31.5 h 33.5



INLINE TABLE
w 24 d 30.5 h 16



LEFT OR RIGHT END TABLE
w 24 d 30.5 h 16
(FREESTANDING TABLE ALSO AVAILABLE)



OPEN WOOD
OPTIONS:
POLY ARM CAP



FULL UPHOLSTERED
OPTIONS:
POLY ARM CAP
WOOD ARM CAP

+EKOCARE FEATURES

- WALL SAVER LEGS
- CLEAN-OUT SEAT
- EKO GUARD® ANTI-MICROBIAL FINISH
- MOISTURE BARRIER
- FIELD REPLACEABLE COMPONENTS
- PUZZLE FIT FRAME CONSTRUCTION
- SUPPORTS 500 LBS.
- DURABLE LAMINATE TOPS
- OPTIONAL PROTECTIVE ARM CAPS
- LIFETIME WARRANTY



PATIENT ROOM



PATIENT
W 24 D 27 H 44



OPEN WOOD
OPTIONS:
POLY ARM CAP

+EKOCARE FEATURES

- WALL SAVER LEGS
- CLEAN-OUT SEAT
- EKO GUARD® ANTI-MICROBIAL FINISH
- MOISTURE BARRIER
- REMOVABLE COVERS
- FIELD REPLACEABLE COMPONENTS
- STEEL SEAT AND BACK FRAME
- SUPPORTS 350 LBS.
- MOLDED SOY BASED BIO® FOAM
- SEMI-FLEX COMFORT BACK
- OPTIONAL PROTECTIVE ARM CAPS
- LIFETIME WARRANTY



RECLINERS



TRANSPORT CHAIR
 W 34 D 39 H 46
 (SUPPORTS 750 LBS.)



WALLSAVER RECLINER
 W 33.5 D 31.5 H 45
 (SUPPORTS 500 LBS.)



OPEN WOOD
 OPTIONS:
 POLY ARM CAP

FULL UPHOLSTERED
 OPTIONS:
 POLY ARM CAP
 WOOD ARM CAP

+EKOCARE FEATURES

- WALL SAVER LEGS
- CLEAN-OUT SEAT
- EKO GUARD® ANTI-MICROBIAL FINISH
- MOISTURE BARRIER
- FIELD REPLACEABLE COMPONENTS
- PUZZLE FIT FRAME CONSTRUCTION
- OPTIONAL PROTECTIVE ARM CAPS
- OPTIONAL IV POLE
- OPTIONAL OXYGEN TANK HOLDER
- DRAINAGE BAG HOOK
- OPTIONAL DROP SIDE TABLE
- CENTRAL LOCKING CASTERS
- CONFORMS TO TRENDELENBURG POSITION
- LIFETIME WARRANTY



SLEEPERS



SLEEPER CHAIR
 W 36.25 D 36 H 36
 (OPENS TO 78 SLEEP DEPTH)



SLEEPER LOVESEAT
 W 50.25 D 38 H 34.25
 (OPENS TO 72 SLEEP DEPTH)



SLEEPER SOFA
 W 83.5 D 36 H 36.25
 (OPENS TO 30.25 SLEEP DEPTH AND 79.5 SLEEP WIDTH)

CONTAINS UNDERNEATH STORAGE COMPARTMENT
 WITH EASY-LIFT GAS CYLINDER OPENING ASSISTANCE.



OPEN WOOD
 OPTIONS:
 POLY ARM CAP



FULL UPHOLSTERED
 OPTIONS:
 POLY ARM CAP
 WOOD ARM CAP

+EKOCARE FEATURES

- WALL SAVER LEGS
- CLEAN-OUT SEAT
- EKO GUARD® ANTI-MICROBIAL FINISH
- MOISTURE BARRIER
- FIELD REPLACEABLE COMPONENTS
- PUZZLE FIT FRAME CONSTRUCTION
- SUPPORTS 600 LBS.
- OPTIONAL PROTECTIVE ARM CAPS
- OPTIONAL IV POLE
- OPTIONAL DROP SIDE TABLE
- LIFETIME WARRANTY



THE LOSS OF ONE CHILD BIRTHED A MISSION
TO SAVE THOUSANDS OF OTHERS.



A PERCENTAGE OF SALES ON THE KARDIA
COLLECTION WILL BE DONATED TO THE AUSTIN
HATCHER FOUNDATION TO RAISE FUNDS FOR
PEDIATRIC CANCER RESEARCH, TREATMENT AND
COUNSELING. TO LEARN MORE ABOUT AUSTIN'S
STORY VISIT WWW.HATCHERFOUNDATION.ORG.

PUBLIC
LOUNGE
BARIATRIC
PATIENT
RECLINER
SLEEPER



kardia collection

SOLUTIONS IN CONTRACT DESIGN

THIS COMPLETE COLLECTION OF SEATING IS THOUGHTFULLY DESIGNED FOR SEAMLESS SPECIFICATION THROUGHOUT HIGH TRAFFIC HEALTHCARE FACILITIES. INTELLIGENT FEATURES INCLUDE: WALL SAVER LEG DESIGN, CLEAN-OUT SEAT, MOISTURE BARRIER PROTECTION, REMOVABLE COVERS, NO UP-CHARGE ON COMBINATION UPHOLSTERY, AND EKO GUARD[®] ANTI-MICROBIAL FINISH POWERED BY AGION TECHNOLOGY. PUBLIC AND PATIENT SEATING MODELS FEATURE A SEMI-FLEX BACK, FOR COMFORT AND EASE OF EGRESS, AND STEEL SEAT/BACK FRAME CONSTRUCTION WITH ENVIRONMENTALLY FRIENDLY COLD MOLDED SOY BASED BIO[®] FOAM. ALL KARDIA HEALTHCARE PRODUCTS OFFER A LIMITED LIFETIME WARRANTY FROM DEFECTS IN MATERIALS AND WORKMANSHIP FOR THE LIFETIME OF PRODUCT USE.

DESIGNED BY JOHN STAFFORD/CHRIS CARTER.



145 RYMER ROAD, NE
CLEVELAND, TN 37323

VOICE 866 814 8860
866 814 8356
FAX 615 676 4861
EMAIL sales@ekocontract.com
WEB ekocontract.com

kardia collection
3-POSITION RECLINERS
4-POSITION RECLINERS

+eko
care





3- AND 4-POSITION RECLINERS



3-POSITION RECLINER
 W 31 D 34 H 43
 (SUPPORTS 500 LBS.)



4-POSITION TRENDENBURG
 RECLINER
 W 32.5 D 34 H 43
 (SUPPORTS 500 LBS.)

TRENDENBURG RECLINER ONLY
 AVAILABLE WITH FULLY UPHOLSTERED ARMS



PUSH BAR

REDUCES BACK STRAIN AMONG
 CAREGIVING STAFF BY ASSISTING
 WITH RECLINER OPERATION
 AND MOBILITY EASE.



OPTIONAL IV POLE

HEIGHT ADJUSTABLE IV POLE
 IS AVAILABLE FOR INSTALLATION
 ON RIGHT OR LEFT SIDE OF ARM.



OPTIONAL DROP-SIDE TABLE

PROVIDES EASY-TO-REACH ACCESS
 WHILE SEATED AND FOLDS DOWN
 WHEN NOT IN USE. AVAILABLE ON
 RIGHT OR LEFT SIDE OF UPHOLSTERED
 ARM MODELS ONLY.



OPTIONAL TRANSFER ARM

FOLD-DOWN ARM ALLOWS FOR SAFE
 AND EASY TRANSFER OF PATIENTS TO
 AND FROM RECLINER. AVAILABLE ON
 RIGHT, LEFT OR BOTH SIDES OF
 UPHOLSTERED ARM MODELS ONLY.



OPEN WOOD

OPTIONS:
 POLY ARM CAP

OPEN ARM NOT AVAILABLE ON
 TRENDENBURG MODELS



FULL UPHOLSTERED

OPTIONS:
 POLY ARM CAP
 WOOD ARM CAP

DESIGNED BY JOHN STAFFORD/CHRIS CARTER

+EKOCARE FEATURES

- CLEAN-OUT SEAT
- ROUNDED ARMS FOR SAFE INGRESS/EGRESS
- EKO GUARD[®] ANTI-MICROBIAL FINISH
- SOY BASED PRESERVE FOAM[®]
- COMFORTABLE COIL SEAT CONSTRUCTION
- HEAVY DUTY RECLINER MECHANISM
- FIELD REPLACEABLE COMPONENTS
- PUZZLE FIT FRAME CONSTRUCTION
- HEAVY DUTY CENTRAL LOCKING CASTERS
- OPTIONAL MOISTURE BARRIER
- OPTIONAL PROTECTIVE ARM CAPS
- OPTIONAL IV POLE
- OPTIONAL OXYGEN TANK HOLDER
- OPTIONAL DRAINAGE BAG HOOK
- OPTIONAL UP AND OVER, FLIP-DOWN TRAY
- OPTIONAL DROP-SIDE TABLE
- LIFETIME WARRANTY



*THE LOSS OF ONE CHILD BIRTHED A MISSION
TO SAVE THOUSANDS OF OTHERS.*



*A PERCENTAGE OF SALES ON THE KARDIA
COLLECTION WILL BE DONATED TO THE AUSTIN
HATCHER FOUNDATION TO RAISE FUNDS FOR
PEDIATRIC CANCER RESEARCH, TREATMENT AND
COUNSELING. TO LEARN MORE ABOUT AUSTIN'S
STORY VISIT WWW.HATCHERFOUNDATION.ORG.*



kardia collection

SOLUTIONS IN CONTRACT DESIGN



145 RYMER ROAD, NE
CLEVELAND, TN 37323

VOICE 866 814 8600

866 814 8356

FAX 615 676 4861

EMAIL sales@ekocontract.com

WEB ekocontract.com

kardia collection
GLIDER

+eko
care



GLIDER



GLIDER CHAIR
 W 30 D 35 H 41.25
 (SUPPORTS 500 LBS.)

SMOOTH GLIDING MOTION EASES PATIENT STRESS AND TENSION. LOCKING MECHANISM ALLOWS GLIDER TO BE LOCKED IN A FIXED POSITION.



SHOWN WITH OPTIONAL HEADREST

+EKO CARE FEATURES

- WALL SAVER LEGS
- CLEAN-OUT SEAT
- ROUNDED ARMS FOR SAFE INGRESS/EGRESS
- EKO GUARD® ANTI-MICROBIAL FINISH
- SOY BASED PRESERVE FOAM®
- COMFORTABLE COIL SEAT CONSTRUCTION
- HEAVY DUTY GLIDER MECHANISM
- FIELD REPLACEABLE COMPONENTS
- PUZZLE FIT FRAME CONSTRUCTION
- OPTIONAL MOISTURE BARRIER
- OPTIONAL PROTECTIVE ARM CAPS
- LIFETIME WARRANTY



RECESSED FRONT PANEL

ALLOWS FEET TO BE POSITIONED SLIGHTLY BACK UNDER SEAT FOR GREATER BODY BALANCE AND SAFER PATIENT INGRESS/EGRESS TO AND FROM CHAIR.



THE LOSS OF ONE CHILD BIRTHED A MISSION TO SAVE THOUSANDS OF OTHERS.

A PERCENTAGE OF SALES ON THE KARDIA COLLECTION WILL BE DONATED TO THE AUSTIN HATCHER FOUNDATION TO RAISE FUNDS FOR PEDIATRIC CANCER RESEARCH, TREATMENT AND COUNSELING. TO LEARN MORE ABOUT AUSTIN'S STORY VISIT WWW.HATCHERFOUNDATION.ORG.



OPEN WOOD
 OPTION:
 POLY ARM CAP



FULL UPHOLSTERED
 OPTIONS:
 POLY ARM CAP
 WOOD ARM CAP



146 RYMER ROAD, NE
 CLEVELAND, TN 37323

VOICE 866 814 8eko

866 814 8356

FAX 615 676 4861

EMAIL sales@ekocontract.com

WEB ekocontract.com

kardia collection
SIDE SLEEPER

+eko
care



SIDE SLEEPER



SIDE SLEEPER
 W 62.25 D 36.5 H 33
 (EXTENDS TO 78 SLEEP WIDTH)

CONTAINS UNDERNEATH STORAGE COMPARTMENT
 LOCATED WITHIN ARM EXTENSION.



REMOVABLE BACK CUSHIONS EXTEND SOFA WIDTH
 AND DEPTH FOR ADDED SLEEPING COMFORT.



FULL UPHOLSTERED

OPTIONS:
 POLY ARM CAP
 WOOD ARM CAP

+EKO CARE FEATURES

WALL SAVER LEGS
 CLEAN-OUT SEAT
 EKO GUARD® ANTI-MICROBIAL FINISH
 FIELD REPLACEABLE COMPONENTS
 PUZZLE FIT FRAME CONSTRUCTION
 SUPPORTS 500 LBS.
 OPTIONAL MOISTURE BARRIER
 OPTIONAL PROTECTIVE ARM CAPS
 LIFETIME WARRANTY



PULL-OUT STORAGE

COMPARTMENT EASILY STOWS
 BLANKETS AND PILLOWS AND IS
 LINED WITH A BLEACH CLEANABLE
 VACUUM FORMED TRAY.



**THE LOSS OF ONE CHILD BIRTHED A
 MISSION TO SAVE THOUSANDS OF OTHERS.**

A PERCENTAGE OF SALES ON THE KARDIA
 COLLECTION WILL BE DONATED TO THE
 AUSTIN HATCHER FOUNDATION TO RAISE
 FUNDS FOR PEDIATRIC CANCER RESEARCH,
 TREATMENT AND COUNSELING. TO LEARN
 MORE ABOUT AUSTIN'S STORY VISIT
WWW.HATCHERFOUNDATION.ORG.



146 RYMER ROAD, NE
 CLEVELAND, TN 37323

VOICE 866 814 860

866 814 8356

FAX 615 676 4861

EMAIL sales@ekocontract.com

WEB ekocontract.com

lounge gallery

+eko
care

HYPATE
MACHI / MACHI²
MOD
NV
REED
STRATOS
SUTTON
TABLES





LOUNGE GALLERY FOR HEALTHCARE

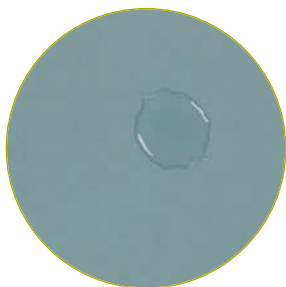
OUR CELEBRATED
LOUNGE COLLECTIONS
ARE NOW SMARTLY
DESIGNED WITH
THE FEATURES
APPLICABLE TO
TODAY'S HIGH
TRAFFIC HEALTHCARE
ENVIRONMENTS. AND
WHILE WE CAN'T
GUARANTEE A LIFETIME
OF GOOD HEALTH, WE
CAN MAKE EVERYONE
FEEL COMFORTABLE
WHILE HEALING.





WARRANTY

ALL +EKOCARE PRODUCTS FEATURE A LIMITED LIFETIME WARRANTY FROM DEFECTS IN MATERIALS AND WORKMANSHIP FOR THE LIFETIME OF PRODUCT USE.



EKO GUARD[®] ANTI-MICROBIAL FINISH

+EKOCARE MODELS COME STANDARD WITH EKO GUARD[®], A PROPRIETARY ANTI-MICROBIAL FINISH FORMULATION, POWERED BY AGION[®] TECHNOLOGY, THAT INHIBITS THE GROWTH OF MOLD AND MILDEW. SURFACES COATED WITH THIS FINISH WILL HAVE REDUCED FUNGAL, SPORE, AND BACTERIA GROWTH.



CLEAN-OUT SEAT

+EKOCARE MODELS FEATURE A CLEAN OUT SPACE AT THE BACK OF THE SEAT THAT ALLOWS DIRT AND DEBRIS TO FALL THROUGH TO THE FLOOR FOR EASY CLEAN UP.



PROTECTIVE ARM CAPS

WOOD AND POLYURETHANE ARM CAPS PROTECT SEATING AGAINST WEAR AND TEAR WITHIN HIGH TRAFFIC AREAS ADDING PRODUCT LONGEVITY.

HYPATE LOUNGE *FOR HEALTHCARE*





HYPATE
[HORIZONTAL STITCH BACK]

CLUB CHAIR EC-32041
W 35 D 31 H 35.5

LOVESEAT EC-32042
W 57 D 31 H 35.5

SOFA EC-32043
W 72 D 31 H 35.5

BARIATRIC 32046B
W 44 D 33.25 H 35.5
(SUPPORTS 550 LBS.)



HYPATE
[BISCUIT-TUFT BACK]

CLUB CHAIR EC-32061
W 35 D 31 H 35.5

LOVESEAT EC-32062
W 57 D 31 H 35.5

SOFA EC-32063
W 72 D 31 H 35.5

BARIATRIC EC-32066B
W 44 D 33.25 H 35.5
(SUPPORTS 550 LBS.)

HYPATE ARM CAP OPTIONS



WOOD CAP



BLACK POLY CAP

+EKO CARE FEATURES

BARIATRIC MODEL AVAILABLE
CLEAN-OUT SEAT
EKO GUARD® ANTI-MICROBIAL FINISH
MOISTURE BARRIER
PROTECTIVE ARM CAPS

MACHI / MACHI[®] FOR HEALTHCARE





MACHI

[WELT CORD DETAILING]

CLUB CHAIR EC-32081 (WOOD LEGS)
CLUB CHAIR EC-32181 (METAL LEGS)
W 33 D 32 H 32.5

LOVESEAT EC-32082 (WOOD LEGS)
LOVESEAT EC-32182 (METAL LEGS)
W 56.5 D 32 H 32.5

SOFA EC-32083 (WOOD LEGS)
SOFA EC-32183 (METAL LEGS)
W 78.5 D 32 H 32.5

OPTION:
METAL FEET



MACHI[®]

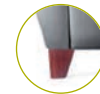
[WITHOUT WELT CORD DETAILING]

CLUB CHAIR EC-32281 (WOOD LEGS)
CLUB CHAIR EC-32381 (METAL LEGS)
W 33 D 32 H 32.5

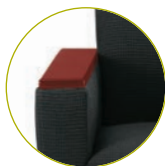
LOVESEAT EC-32282 (WOOD LEGS)
LOVESEAT EC-32382 (METAL LEGS)
W 56.5 D 32 H 32.5

SOFA EC-32283 (WOOD LEGS)
SOFA EC-32383 (METAL LEGS)
W 78.5 D 32 H 32.5

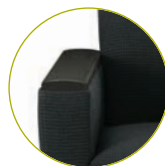
OPTION:
WOOD FEET



MACHI / MACHI[®] ARM CAP OPTIONS



WOOD CAP



BLACK POLY CAP

+EKOCARE FEATURES

- CLEAN-OUT SEAT
- EKO GUARD[®] ANTI-MICROBIAL FINISH
- MOISTURE BARRIER
- PROTECTIVE ARM CAPS

MOD FOR HEALTHCARE





MOD

[PLAIN BACK AND SEAT]

CLUB CHAIR EC-M0071SW (WOOD LEGS)
 CLUB CHAIR EC-M0071SM (METAL LEGS)
 W 34.5 D 31.5 H 32

LOVESEAT EC-M0072SW (WOOD LEGS)
 LOVESEAT EC-M0072SM (METAL LEGS)
 W 61.5 D 31.5 H 32

SOFA EC-M0073SW (WOOD LEGS)
 SOFA EC-M0073SM (METAL LEGS)
 W 88.5 D 31.5 H 32

STANDARD WITH UPHOLSTERED ARM
 (SHOWN WITH OPTIONAL WOOD CAP)

OPTION:
 WOOD FEET



MOD

[BISCUIT-TUFT BACK AND SEAT]

CLUB CHAIR EC-M0081TW (WOOD LEGS)
 CLUB CHAIR EC-M0081TM (METAL LEGS)
 W 34.5 D 31.5 H 32

LOVESEAT EC-M0082TW (WOOD LEGS)
 LOVESEAT EC-M0082TM (METAL LEGS)
 W 61.5 D 31.5 H 32

SOFA EC-M0083TW (WOOD LEGS)
 SOFA EC-M0083TM (METAL LEGS)
 W 88.5 D 31.5 H 32

STANDARD WITH UPHOLSTERED ARM
 (SHOWN WITH OPTIONAL WOOD CAP)

OPTION:
 METAL FEET



MOD ARM CAP OPTIONS



WOOD CAP



BLACK POLY CAP

+EKOCARE FEATURES

- CLEAN-OUT SEAT
- EKO GUARD® ANTI-MICROBIAL FINISH
- MOISTURE BARRIER
- PROTECTIVE ARM CAPS

NV FOR HEALTHCARE





NV

[SATIN NICKEL PLATFORM LEG BASE]

CLUB CHAIR EC-34281 (SATIN NICKEL BACK DETAIL)
 CLUB CHAIR EC-34181 (PLAIN BACK)
 W 34 D 32 H 32.5

LOVESEAT EC-34282 (SATIN NICKEL BACK DETAIL)
 LOVESEAT EC-34182 (PLAIN BACK)
 W 57.5 D 32 H 32.5

SOFA EC-34283 (SATIN NICKEL BACK DETAIL)
 SOFA EC-34183 (PLAIN BACK)
 W 79.5 D 32 H 32.5

OPTION:
 PLAIN BACK



NV SIMPLEX

[SATIN NICKEL CYLINDER LEGS
 AND PLAIN BACK]

CLUB CHAIR EC-34081
 W 34 D 32 H 32.5

LOVESEAT EC-34082
 W 57.5 D 32 H 32.5

SOFA EC-34083
 W 79.5 D 32 H 32.5

NV ARM CAP OPTIONS



WOOD CAP



BLACK POLY CAP

+EKOCARE FEATURES

- CLEAN-OUT SEAT
- EKO GUARD® ANTI-MICROBIAL FINISH
- MOISTURE BARRIER
- PROTECTIVE ARM CAPS

REED FOR HEALTHCARE





REED

CLUB CHAIR EC-32021 (SAME UPHOLSTERY)
 CLUB CHAIR EC-32221 (CONTRAST UPHOLSTERY)
 W 26.7S D 30.5 H 32

LOVESEAT EC-32022 (SAME UPHOLSTERY)
 LOVESEAT EC-32222 (CONTRAST UPHOLSTERY)
 W 49.5 D 30.5 H 32

SOFA EC-32023 (SAME UPHOLSTERY)
 SOFA EC-32223 (CONTRAST UPHOLSTERY)
 W 71.5 D 30.5 H 32

OPTION:
 CONTRAST UPHOLSTERY



REED ARM CAP OPTIONS



WOOD CAP



BLACK POLY CAP

+EKOCARE FEATURES

- CLEAN-OUT SEAT
- EKO GUARD® ANTI-MICROBIAL FINISH
- MOISTURE BARRIER
- PROTECTIVE ARM CAPS

STRATOS *FOR HEALTHCARE*





EC-32091
w 29.5 d 33 h 34



EC-32092
w 52 d 33 h 34



EC-32093
w 74 d 33 h 34



EC-32121R
w 26 d 33 h 34



EC-32122R
w 48.5 d 33 h 34



EC-32123R
w 70.5 d 33 h 34



EC-32121L
w 26 d 33 h 34



EC-32122L
w 48.5 d 33 h 34



EC-32123L
w 70.5 d 33 h 34



EC-32111
w 22.5 d 33 h 34



EC-32112
w 45 d 33 h 34



EC-32113
w 67 d 33 h 34



EC-2131LT
w 22 d 31 h 17



EC-3131LT
w 31 d 31 h 17



EC-4141LT
w 41 d 41 h 17

STRATOS ARM CAP OPTIONS



WOOD CAP

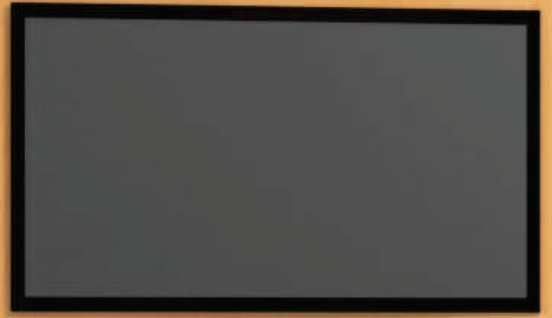


BLACK POLY CAP

+EKOCARE FEATURES

- CLEAN-OUT SEAT
- EKO GUARD® ANTI-MICROBIAL FINISH
- MOISTURE BARRIER
- PROTECTIVE ARM CAPS

SUTTON *FOR HEALTHCARE*





SUTTON

CLUB CHAIR EC-32031
W 30.25 D 32 H 35.5

SUTTON ARM CAP OPTIONS



WOOD CAP



BLACK POLY CAP

+EKO CARE FEATURES

EKO GUARD® ANTI-MICROBIAL FINISH
MOISTURE BARRIER
PROTECTIVE ARM CAPS

LOUNGE TABLES *FOR HEALTHCARE*





KLASS

ROUND END TABLE S2200
DIA 20 H 24

ROUND MAGAZINE TABLE S3800
DIA 38 H 16



META

SQUARE END TABLE S4200
W 20 D 20 H 24

SQUARE MAGAZINE TABLE S4360
W 36 D 36 H 16

RECTANGULAR MAGAZINE TABLE S4240
W 50 D 24 H 16



SYNTH

SQUARE END TABLE S5215Q-L (LAMINATE)
SQUARE END TABLE S5215Q-SBW (WHITE SOLID SURFACE)
W 21 D 21 H 24

SQUARE MAGAZINE TABLE S5375Q-L (LAMINATE)
SQUARE MAGAZINE TABLE S5375Q-SBW (WHITE SOLID SURFACE)
W 37 D 37 H 16

ROUND END TABLE S521R-SBW
(WHITE SOLID SURFACE)
DIA 21 H 24

ROUND MAGAZINE TABLE S537R-SBW
(WHITE SOLID SURFACE)
DIA 37 H 16



FUSE

CYLINDER		CUBE/3" RADIUS CUBE	
DIA 18	H 16	W 18	D 18 H 16
DIA 18	H 20	W 18	D 18 H 20
DIA 18	H 24	W 18	D 18 H 24
DIA 24	H 16	W 24	D 24 H 16
DIA 24	H 20	W 24	D 24 H 20
DIA 24	H 24	W 24	D 24 H 24
DIA 36	H 16	W 36	D 36 H 16
DIA 36	H 20	W 36	D 36 H 20
DIA 36	H 24	W 36	D 36 H 24

AVAILABLE IN LAMINATE ONLY.

OPTIONS:
3-INCH OR 3/4-INCH BLACK OR
SILVER LAMINATE RECESSED PLINTH BASE

+EKOCARE FEATURES

DURABLE LAMINATE TOPS
WHITE SOLID SURFACE TOPS
EKO GUARD® ANTI-MICROBIAL FINISH

HYPATE
MACHI / MACHI²
MOD
NV
REED
STRATOS
SUTTON
TABLES



lounge gallery

SOLUTIONS IN CONTRACT DESIGN



145 RYMER ROAD, NE
CLEVELAND, TN 37323

VOICE 866 814 8600
866 814 8356

FAX 615 676 4861

EMAIL sales@ekocontract.com

WEB ekocontract.com

hypate bariatric

+eko
care





FEATURES

CLEAN OUT SEAT

BARIATRIC MODELS FEATURE A CLEAN OUT SPACE AT THE BACK OF THE SEAT THAT ALLOWS DIRT AND DEBRIS TO FALL THROUGH TO THE FLOOR FOR EASY CLEAN UP. HYPATE COMPLIMENTARY LOUNGE SEATING MAY BE SPECIFIED WITH CLEAN OUT FEATURE AT NO ADDITIONAL COST.

ANTI-MICROBIAL FINISH

HYPATE BARIATRIC UNITS COME STANDARD WITH AN ANTI-MICROBIAL FINISH THAT INHIBITS THE GROWTH OF MOLD AND MILDEW. SURFACES COATED WITH THIS FINISH WILL HAVE REDUCED FUNGAL, SPORE, AND BACTERIA GROWTH.

MOISTURE BARRIER

FOR ADDED PROTECTION A MOISTURE BARRIER IS AVAILABLE ON HYPATE MODELS TO PREVENT STAINS AND LIQUIDS FROM PENETRATING THE UPHOLSTERY AND FOAM TO KEEP SEATING DRY AND CLEAN AT ALL TIMES.

CONSTRUCTION

SOLID HARDWOOD FRAMES WITH CORNER BLOCKED, GLUED, AND FASTENED JOINTS SUPPORT UP TO 550 POUNDS.

CAL133

HYPATE IS AVAILABLE WITH CAL 133 FLAMMABILITY CODE COMPLIANCE ON TEXTILES FOR AN ADDITIONAL CHARGE.



BARIATRIC 320468
W 44 D 33.25 H 35.5

ALSO AVAILABLE:
320568 WITH WOOD ARM INSERT
320668 BISCUIT TUFT BACK
320768 BISCUIT TUFT BACK WITH WOOD ARM INSERT

h y p a t e b a r i a t r i c

SOLUTIONS IN CONTRACT DESIGN

HYPATE BARIATRIC FLAUNTS GRACEFUL CURVES, REFINED SHAPES, AND FLARED LINES FROM EVERY ANGLE, IN A COLLECTION THAT SHOWCASES ATTENTION TO DETAILS. BARIATRIC MODELS ACCOMMODATE UP TO 550 POUNDS AND COME STANDARD WITH A DISCREET PASS THROUGH BETWEEN THE SEAT AND BACK FOR HEALTHCARE ENVIRONMENTS. PAIR BARIATRIC MODELS WITH STANDARD HYPATE LOUNGE MODELS FOR A COMPLETE PUBLIC SPACE SOLUTION.

DESIGNED BY JOHN STAFFORD/CHRIS CARTER.

SHOWN ABOVE IN WHISPER VINYL BRILLIANT WHITE WHI-2116 AND EBONY WALNUT FINISH.



145 RYMER ROAD, NE
CLEVELAND, TN 37323

VOICE 866 814 86KO
866 814 8356

FAX 615 676 4861

EMAIL sales@ekocontract.com

WEB ekocontract.com





Upholstery - Burch - Magnificent - Grade 2

Note: EKO reserves the right to reject fabrics when necessary if the quality or construction is not satisfactory for intended products.

[Click here to order samples](#)

Face: 100% Polyurethane, Backing: 75% Polyester, 25% Cotton; Finish: NA; Width: 54"; Abrasion 100,000+ Double Rubs



Admiral
1004277



Arrow
1004267



Ash
1004273



Buff
1004265



Burgundy
1004282



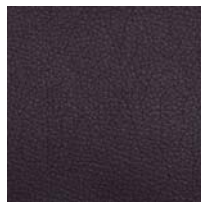
Canyon
1004281



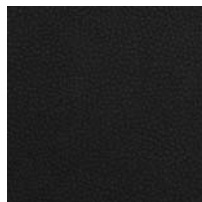
Caramel
1004287



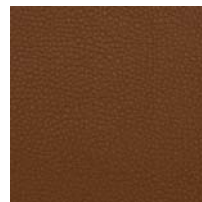
Cloud
1004272



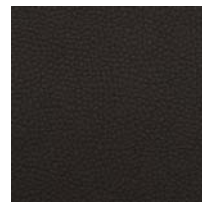
Concorde
1004278



Ebony
1004279



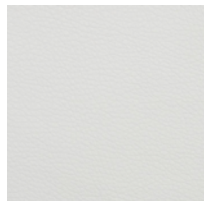
Elm
1004285



Espresso
1004280



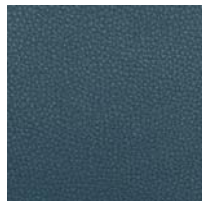
Forest
1004269



Glacier
1004262



Golden
1004288



Havana
1004276



Mint
1004271



Moss
1004270



Natural
1004289



Oyster
1004263



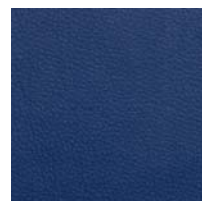
Pecan
1004286



Raspberry
1004283



Red
1004284



Royal
1004275



Upholstery - Burch - Magnificent - Grade 2

Note: EKO reserves the right to reject fabrics when necessary if the quality or construction is not satisfactory for intended products.

Face: 100% Polyurethane, Backing: 75% Polyester, 25% Cotton; Finish: NA; Width: 54"; Abrasion 100,000+ Double Rubs



Sage
1004268



Sand
1004264



Sky
1004274



Taupe
1004266



Upholstery - Culp - Dillon - Grade 2

Note: EKO reserves the right to reject fabrics when necessary if the quality or construction is not satisfactory for intended products. [Click here to order samples](#)

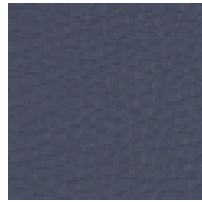
100% Polyurethane; Finish: Antimicrobial; Width: 54"; Abrasion 200,000 Double Rubs



Sage



Williamsburg



Ocean



Luggage



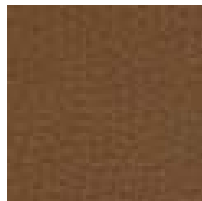
Fiesta



Buff



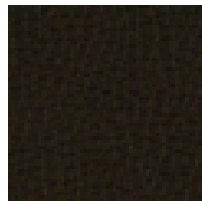
Cordovan



Java



Stratus



Black



Snow



Lipstick



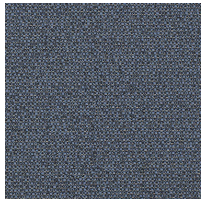
Apple Green



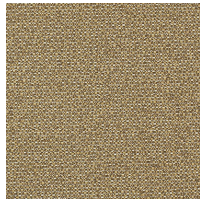
Upholstery - Momentum - Bangle - Grade 2

Note: EKO reserves the right to reject fabrics when necessary if the quality or construction is not satisfactory for intended products. [Click here to order samples](#)

58% Post Consumer Recycled Polyester; 42% Polyester; Finish: NA; Width: 54"; Abrasion 51,000 Double Rubs



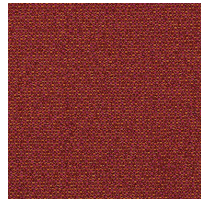
Baltic



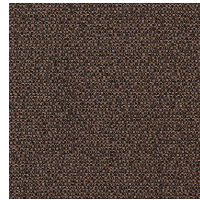
Cork



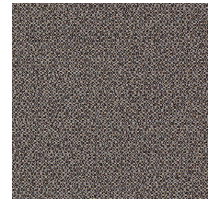
Teak



Orchid



Suede



Granite



Sable

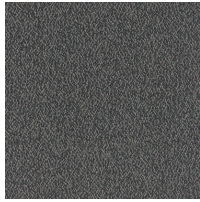


Upholstery - Momentum - Basis - Grade 2

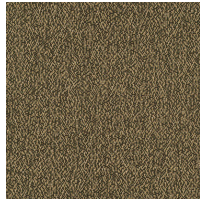
Note: EKO reserves the right to reject fabrics when necessary if the quality or construction is not satisfactory for intended products.

[Click here to order samples](#)

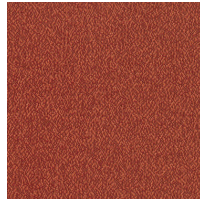
65% Post Industrial Recycled Polyester; 35% Post Consumer Recycled Polyester; Finish: NA; Width: 54";
Abrasion 60,000 Double Rubs



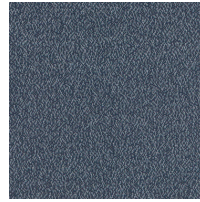
Fog



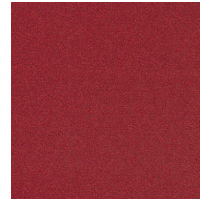
Twig



Amber



Colonial



Ruby



Indigo



Onyx



Upholstery - Momentum - Canter - Grade 2

Note: EKO reserves the right to reject fabrics when necessary if the quality or construction is not satisfactory for intended products. [Click here to order samples](#)

100% Polyurethane / PVC Free; Finish: Anti-Microbial, Anti-Bacterial; Width: 54"; Abrasion 102,000 Double Rubs



Sand



Saddle



Chestnut



Ancho



Bordeaux



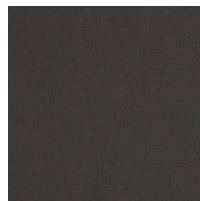
Alfalfa



Willow



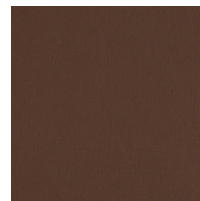
Earth



Night



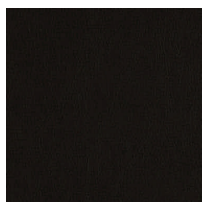
Safari



Mica



Sable



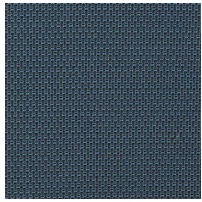
Onyx



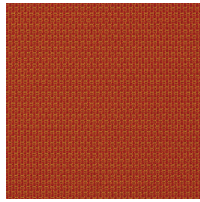
Upholstery - Momentum - Epic - Grade 2

Note: EKO reserves the right to reject fabrics when necessary if the quality or construction is not satisfactory for intended products. [Click here to order samples](#)

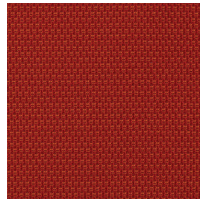
50% Polyester; 32% Post Industrial Recycled Polyester; 18% Post Consumer Recycled Polyester; Finish: Soil & Stain Resistant; Width: 54"; Abrasion 100,000 Double Rubs



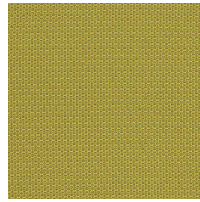
Azure



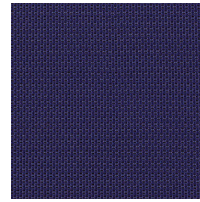
Slice



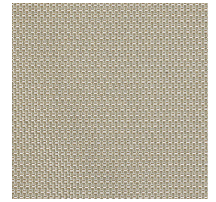
Flare



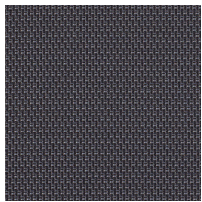
Kiwi



Regal



Limestone



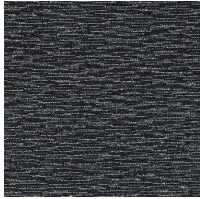
Steel



Upholstery - Momentum - Fuse - Grade 2

Note: EKO reserves the right to reject fabrics when necessary if the quality or construction is not satisfactory for intended products. [Click here to order samples](#)

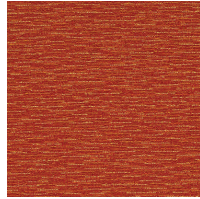
65% Post Industrial Recycled Polyester; 35% Post Consumer Recycled Polyester; Finish: Soil & Stain Resistant; Width: 54"; Abrasion 100,000 Double Rubs



Azurean



Morel



Pimento



Pristine



Walnut



Lunar



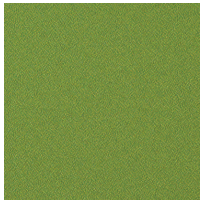
Pepper



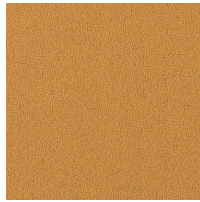
Upholstery - Momentum - Hue - Grade 2

Note: EKO reserves the right to reject fabrics when necessary if the quality or construction is not satisfactory for intended products. [Click here to order samples](#)

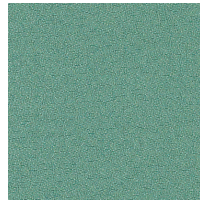
100% Post Industrial Recycled Polyester; Finish: Teflon® ; Width: 54"; Abrasion 1,000,000 Double Rubs



Stem



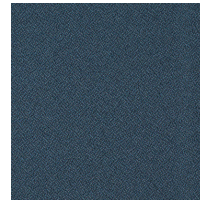
Golden



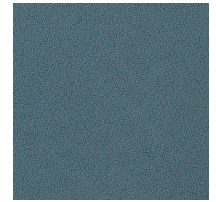
Pacific



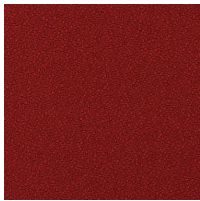
Paprika



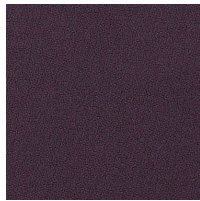
Seaport



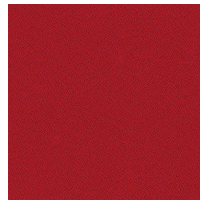
Sky



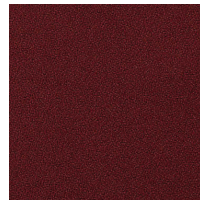
Chipotle



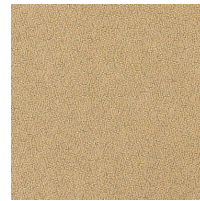
Eggplant



Hibiscus



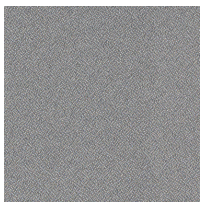
Currant



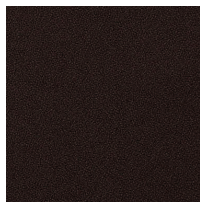
Dandelion



Shade



Quarry



Black



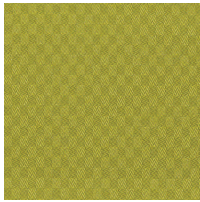
Upholstery - Momentum - Insight - Grade 2

Repeat: 1/4"v x 1/2"H

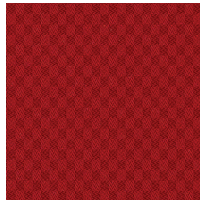
Note: EKO reserves the right to reject fabrics when necessary if the quality or construction is not satisfactory for intended products.

[Click here to order samples](#)

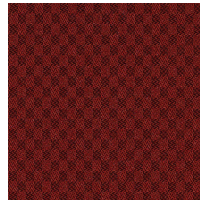
100% Polyester; Finish: NA; Width: 54"; Abrasion 192,000 Double Rubs



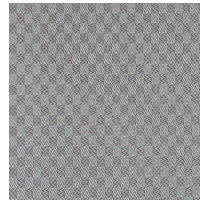
Wasabi



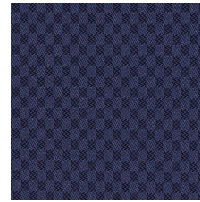
Real Red



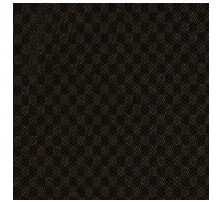
Port



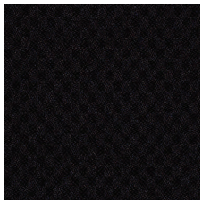
Shale



Periwinkle



Pepper



Ebony



Upholstery - Momentum - Origin - Grade 2

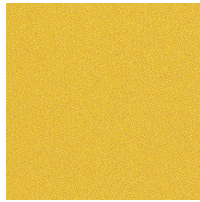
Note: EKO reserves the right to reject fabrics when necessary if the quality or construction is not satisfactory for intended products.

[Click here to order samples](#)

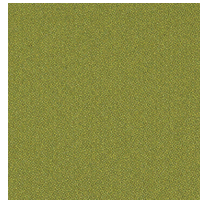
100% Polyester; Finish: NA; Width: 54"; Abrasion 282,000 Double Rubs



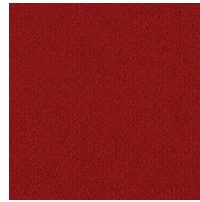
Poppy



Eureka



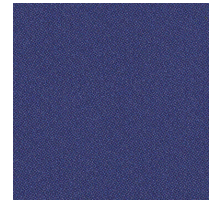
Gaia



Annatte



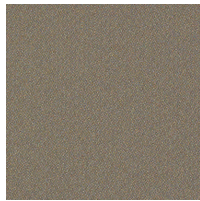
Mikan



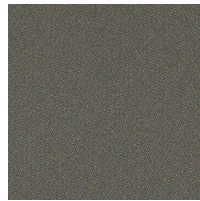
Euro



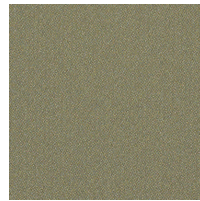
Sapphire



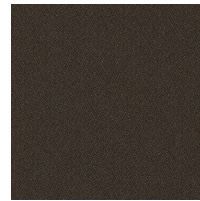
Arundel



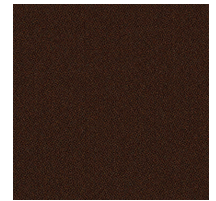
Stately



Avalon



Basalt



Malt



Jet

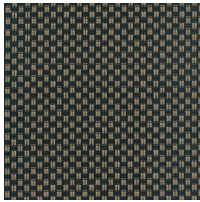


Upholstery - Momentum - Perk - Grade 2 Repeat 1/4"V x 1/4"H

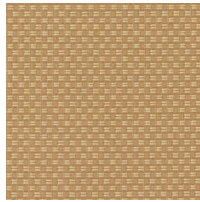
Note: EKO reserves the right to reject fabrics when necessary if the quality or construction is not satisfactory for intended products.

[Click here to order samples](#)

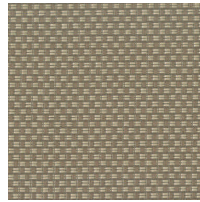
100% Polyester; Finish: NA; Width: 54"; Abrasion 102,000 Double Rubs



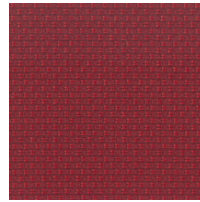
Walnut



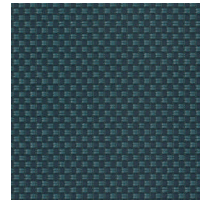
Dijon



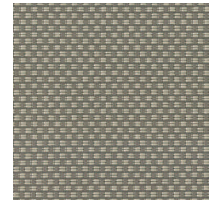
Sesame



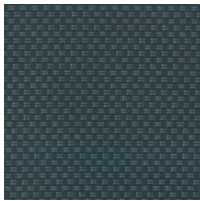
Crimson



Patriot



Pewter



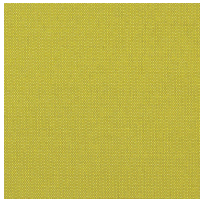
Flint



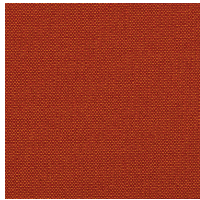
Upholstery - Momentum - Vox - Grade 2

Note: EKO reserves the right to reject fabrics when necessary if the quality or construction is not satisfactory for intended products. [Click here to order samples](#)

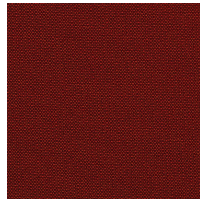
100% Polyester; Finish: NA; Width: 56"; Abrasion 100,000 Double Rubs



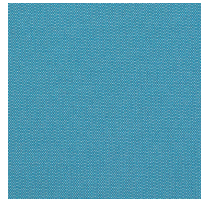
Limelight



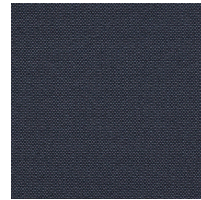
Snap



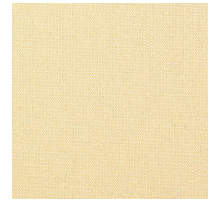
Hot



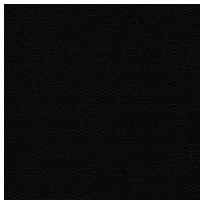
Turquoise



Honest



Oat



Black



Upholstery - Spradling - Whisper - Grade 2

Note: EKO reserves the right to reject fabrics when necessary if the quality or construction is not satisfactory for intended products.

[Click here to order samples](#)

Face: Vinyl/Urethane Topcoat, 100% Polyester Hi-Loft; Finish: Napa; Width: 54"; Abrasion 100,000 Double Rubs



Cappuccino
WHI-2121



Brilliant White
WHI-2116



Bone
WHI-2117



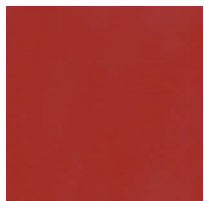
Khaki
WHI-2130



Green Tea
WHI-2131



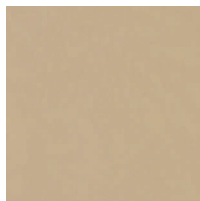
Anthracite
WHI-2135



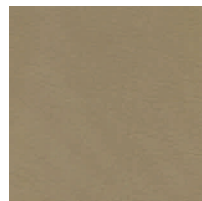
Salsa
WHI-2124



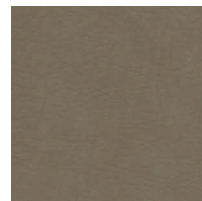
Sisal
WHI-2122



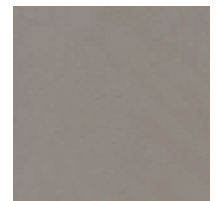
Cashew
WHI-2141



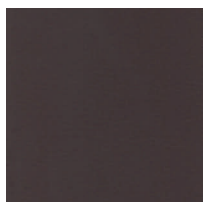
Gravel
WHI-2119



Antelope
WHI-2120



Elephant
WHI-2138



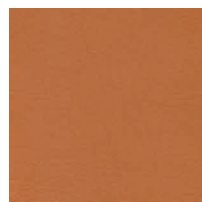
Espresso
WHI-2143



Camel
WHI-2118



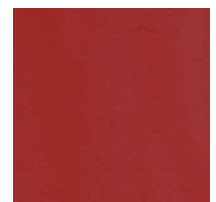
Cognac
WHI-2142



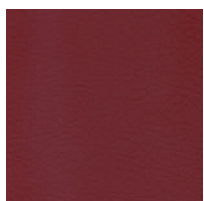
Luggage
WHI-2123



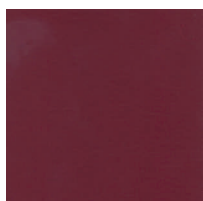
Cinnamon
WHI-2125



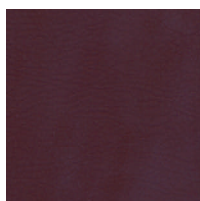
Bordeaux
WHI-2126



Merlot
WHI-2127



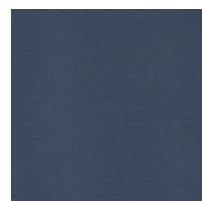
Sangre
WHI-2144



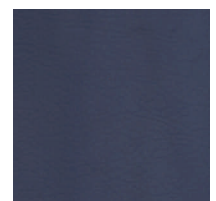
Nightshade
WHI-2128



Patina
WHI-2134



Cerulean
WHI-2136



Navy
WHI-2137



Upholstery - Spradling - Whisper - Grade 2

Note: EKO reserves the right to reject fabrics when necessary if the quality or construction is not satisfactory for intended products.

Face: Vinyl/Urethane Topcoat, 100% Polyester Hi-Loft; Finish: Napa; Width: 54"; Abrasion 100,000 Double Rubs



Charcoal
WHI-2139



Cavern Moss
WHI-2132



Forest
WHI-2129



Loden
WHI-2133



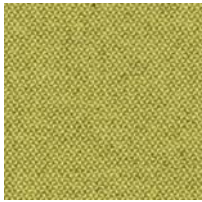
Black
WHI-2140



Upholstery - Knoll - Hourglass - Grade 3

Note: EKO reserves the right to reject fabrics when necessary if the quality or construction is not satisfactory for intended products. [Click here to order samples](#)

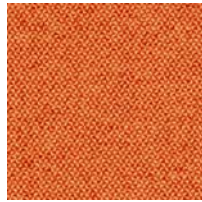
Post Industrial Recycled Polyester 77.0%Polyester 15.0%Nylon 8.0%; Finish: Stain & Soil Rep.; Width: 54"; Abrasion 100,000 Double Rubs



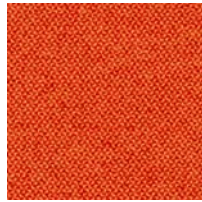
Spring



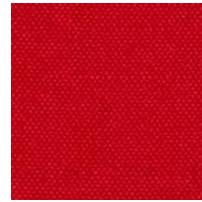
Beeswax



Tangerine



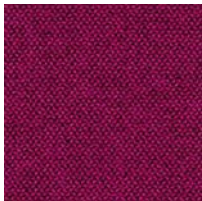
Sunshine



Sizzle



Flame



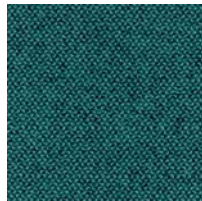
Tart



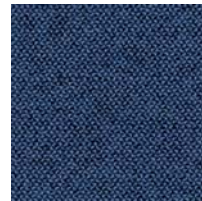
Gull



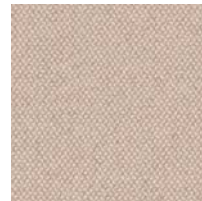
Galaxy



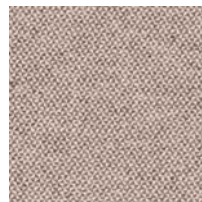
Aegean



Liberty



Sandbar



Cork



Iron



Alley



Upholstery - Knoll - Soliloquy - Grade 3

Note: EKO reserves the right to reject fabrics when necessary if the quality or construction is not satisfactory for intended products. [Click here to order samples](#)

Post Industrial Recycled Polyester 70.0% Post Consumer Recycled Polyester 30.0%; Finish: Stain Repellant;
Width: 54"; Abrasion 90,000 Double Rubs



Citrus



Oatmeal



Earth



Caramel



Meadow



Wildfire



Dahlia



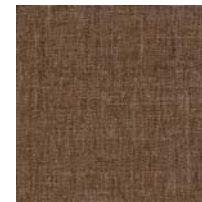
Cornflower



Mist



Shadow



Coffee



Chimney

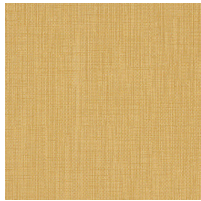


Upholstery - Momentum - Beeline - Grade 3

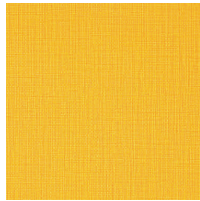
Note: EKO reserves the right to reject fabrics when necessary if the quality or construction is not satisfactory for intended products.

[Click here to order samples](#)

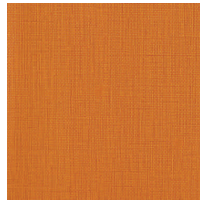
55% Polyurethane / PVC Free; 30% Polyester; 15% Cotton; Finish: Anti-Microbial, Anti-Bacterial; Width: 54";
Abrasion 500,000 Double Rubs



Sisal



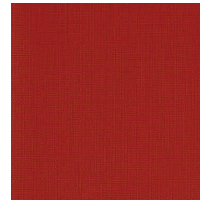
Sundance



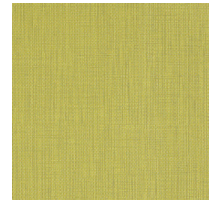
Oriole



Geyser



Parade



Sprout



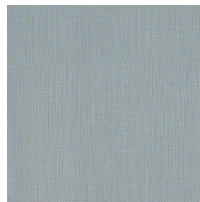
Forge



Eucalyptus



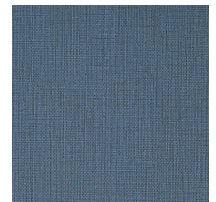
Portobello



Nimbus



Walnut



Tidal



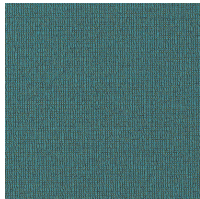
Eclipse



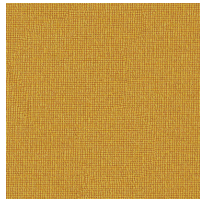
Upholstery - Momentum - Solace - Grade 3

Note: EKO reserves the right to reject fabrics when necessary if the quality or construction is not satisfactory for intended products. [Click here to order samples](#)

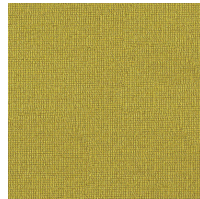
49% Polyester; 41% Post Industrial Recycled Polyester; 10% Post Consumer Recycled Polyester;
Finish: Soil & Stain Resistant; Width: 54"; Abrasion 100,000 Double Rubs



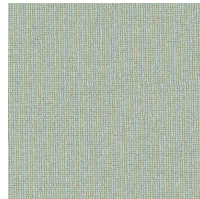
Azul



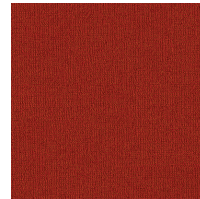
Gilded



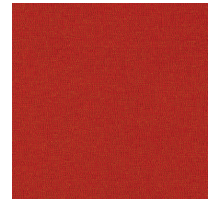
Pear



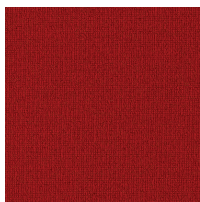
Maui



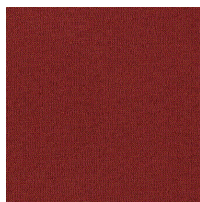
Paprika



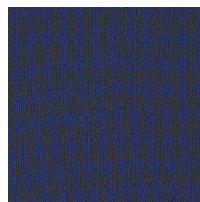
Blaze



Carmine



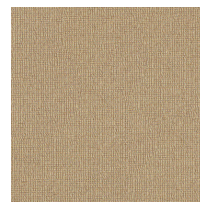
Peony



Lapis



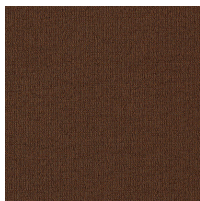
Ivory



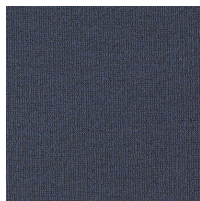
Fossil



Earth



Cinder



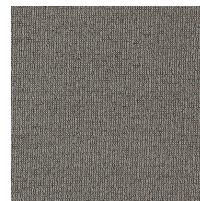
Indigo



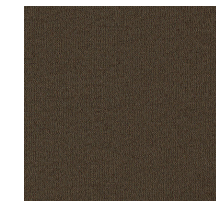
Pewter



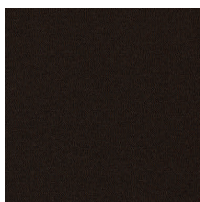
Celadon



Nickel



Mineral



Ebony



Upholstery - Knoll - Sonnet - Grade 4

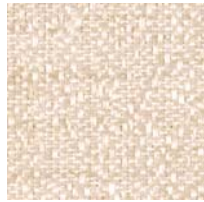
Note: EKO reserves the right to reject fabrics when necessary if the quality or construction is not satisfactory for intended products.

[Click here to order samples](#)

100% Polyester; Finish: NA; Width: 54"; Abrasion 55,000+ Double Rubs



Pumice



Ivory



Cane



Apple



Kelp



Gold



Sierra



Mulberry



Denim



Butterscotch



Cedar



Tornado



Upholstery - Maharam - Messenger - Grade 4

Note: EKO reserves the right to reject fabrics when necessary if the quality or construction is not satisfactory for intended products.

[Click here to order samples](#)

Content: 78% Post-Industrial Recycled Polyester, 15% Polyester, 7% Nylon ; Finish: PFOA-Free Stain Resistant;
Width: 54"; Abrasion 100,000 Double Rubs



Satsuma



Mao



Violet



Balsa



Peridot



Snow



Ice



Lumine



Vibrant



Poppy



Capri



Hydrangea



Nile



Neon



Cactus



Fossil



Cloud



Bayou



Onyx



Upholstery - Maharam - Metric - Grade 4

Note: EKO reserves the right to reject fabrics when necessary if the quality or construction is not satisfactory for intended products.

[Click here to order samples](#)

51% Post-Industrial Recycled Polyester, 49% Polyester; Finish: PFOA-Free Stain Resistant ; Width: 54";
Abrasion 100,000 Double Rubs



Cerise



Fleece



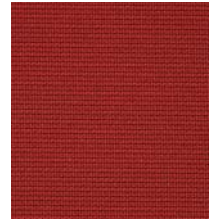
Tupelo



Pollen



Lava



Cardinal



Alligator



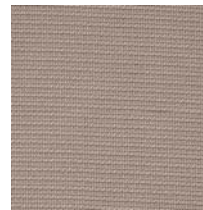
Envy



Scuba



Seaport



Fog



Anchor



Mineral



Bittersweet



Sourdough



Oriole



Twilight



Tar



Upholstery - Maharam - Milestone - Grade 4

Note: EKO reserves the right to reject fabrics when necessary if the quality or construction is not satisfactory for intended products. [Click here to order samples](#)

78% Post-Industrial Recycled Polyester, 15% Polyester, 7% Nylon ;Finish: PFOA-Free Stain Resistant ; Width:54"; Abrasion 300,000 Double Rubs



Daffodil



Aurora



Rush



Basil



Fountain



Lychee



Pewter



Ecrú



Tiger Lily



Merlot



Ribbon



Linger



Charcoal



Bison



Ebony

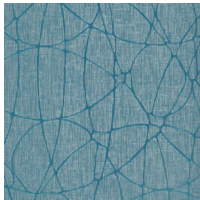


Upholstery - Spradling Healthcare Vinyl - Finite - Grade 4

Note: EKO reserves the right to reject fabrics when necessary if the quality or construction is not satisfactory for intended products.

[Click here to order samples](#)

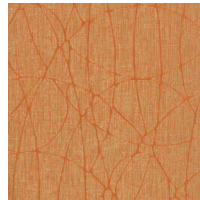
Vinyl/Urethane Topcoat, Hi Loft/100% Polyester; Finish: PermaBlok; Width: 54"; Abrasion 100,000 Double Rubs



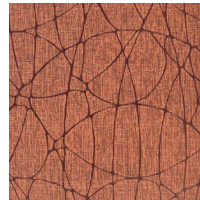
Lagoon
FIN-2707



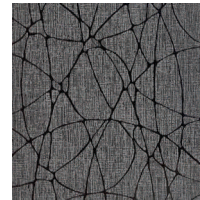
Taupe
FIN-2701



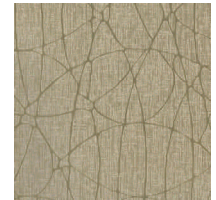
Copper
FIN-2702



Persimmon
FIN-2703



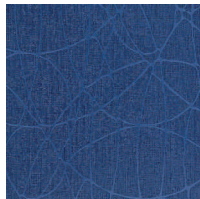
Charblack
FIN-2704



Lichen
FIN-2705



Basil
FIN-2706



Ink
FIN-2708



Upholstery - Spradling Healthcare Vinyl - Scribe - Grade 4

Note: EKO reserves the right to reject fabrics when necessary if the quality or construction is not satisfactory for intended products. [Click here to order samples](#)

Vinyl/Urethane Topcoat, Hi Loft/100% Polyester; Finish: PermaBlok; Width: 54"; Abrasion 100,000 Double Rubs



Sapphire
SCR-2768



Beige
SCR-2761



Sandstone
SCR-2762



Coffee
SCF-2763



Willow
SCR-2764



Leaf
SCR-2765



Woodland
SCR-2766



Glacier
SCR-2767



Graphite
SCR- 2769



Spice
SCR-2770



Merlot
SCR-2771



Upholstery - Spradling Healthcare Vinyl - Sphere - Grade 4

Note: EKO reserves the right to reject fabrics when necessary if the quality or construction is not satisfactory for intended products. [Click here to order samples](#)

Vinyl/Urethane Topcoat, Hi Loft/100% Polyester; Finish: PermaBlok; Width: 54"; Abrasion 100,000 Double Rubs



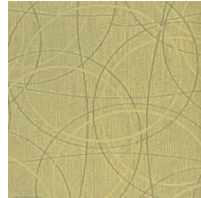
Mango
SPH-2744



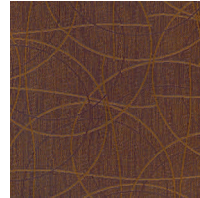
Honey
SPH-2741



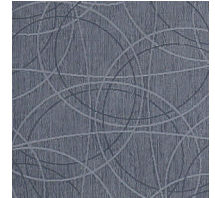
Barley
SPH-2742



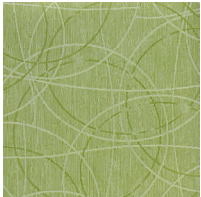
Sprout
SPH-2743



Chocolate
SHP-2745



Charcoal
SPH-2746



Grass
SPH-2747



Wisp
SPH-2748



Turquoise
SPH-2749



Upholstery - Spradling Healthcare Vinyl - Trax - Grade 4

Note: EKO reserves the right to reject fabrics when necessary if the quality or construction is not satisfactory for intended products. [Click here to order samples](#)

Vinyl/Urethane Topcoat, Hi Loft/100% Polyester; Finish: PermaBlok; Width: 54"; Abrasion 100,000 Double Rubs



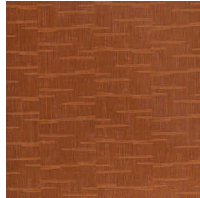
Stone
TRX-2721



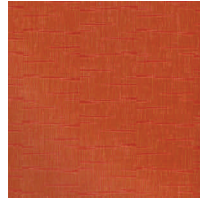
Bronze
TRX-2722



Mocha
TRX-2723



Autumn
TRX-2724



Tomato
TRX-2725



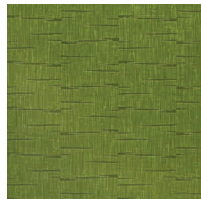
Bordeaux
TRX-2726



Ice
TRX-2727



Patina
TRX-2728



Kiwi
TRX-2729



Indigo
TRX-2730



Silver
TRX-2731



Black
TRX_2732



Upholstery - Maharam - Medium - Grade 5

Note: EKO reserves the right to reject fabrics when necessary if the quality or construction is not satisfactory for intended products.

[Click here to order samples](#)

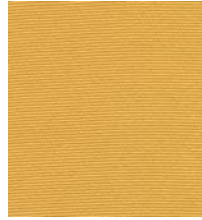
100% Polyester; Finish: Stain Resistant; Width: 54"; Abrasion 200,000 Double Rubs



Delight



Port



Prospect



Pumpkin



Laser



Nautical



Pistachio



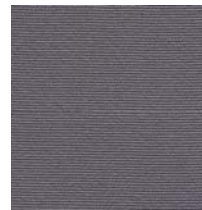
Clover



Pool



Marina



Alloy



Bark



Smoke



Raven



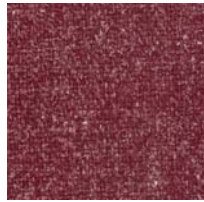
Upholstery - Camira - Hemp - Grade 6

Note: EKO reserves the right to reject fabrics when necessary if the quality or construction is not satisfactory for intended products. [Click here to order samples](#)

60% Pure New Wool, 40% Hemp; Finish: NA; Width: 54"; Abrasion 30,000 Double Rubs



Pollen



Teasel



Gorse



Hectare



Dew



Fallow



Bale



Arable



Upholstery - Momentum - Icon - Grade 6

Note: EKO reserves the right to reject fabrics when necessary if the quality or construction is not satisfactory for intended products. [Click here to order samples](#)

61% Polyurethane / PVC Free; 39% Polyester; Finish: Resilience®; Width: 54"; Abrasion 435,000 Double Rubs



Patina



Lacquer



Antiquated



Jade



Lido



Nocturnelle



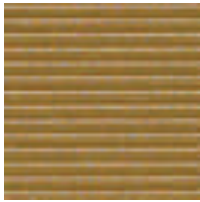
Shadow



Upholstery - Momentum - Paragon - Grade 6

Note: EKO reserves the right to reject fabrics when necessary if the quality or construction is not satisfactory for intended products. [Click here to order samples](#)

61% Polyurethane / PVC Free; 39% Polyester; Finish: Resilience® ; Width: 54"; Abrasion 315,000 Double Rubs



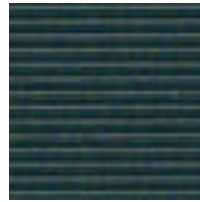
Cairo



Aztec



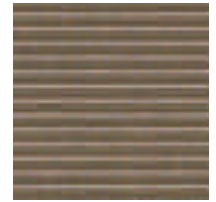
Terrapin



Splash



Windsor



Anew



Earth



Upholstery - Momentum - Silica - Grade 6

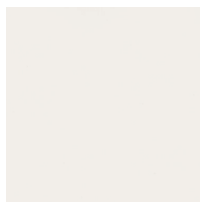
Note: EKO reserves the right to reject fabrics when necessary if the quality or construction is not satisfactory for intended products.

[Click here to order samples](#)

51% Silicone; 49% Polyester; Finish: NA; Width: 54"; Abrasion 365,000 Double Rubs



Burnished



Cumulus



Sands



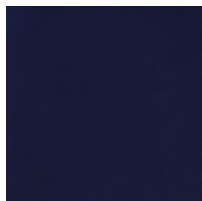
Appletini



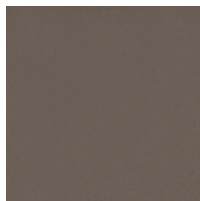
Go



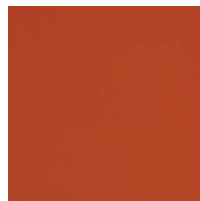
Aqua



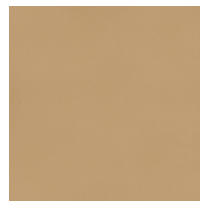
Bright Night



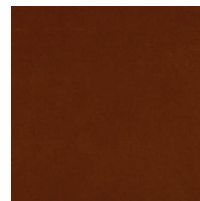
Alloy



Marigold



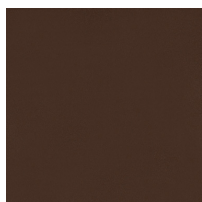
Brownstone



Coppercrest



Bistro



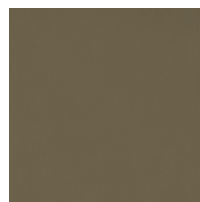
Terra



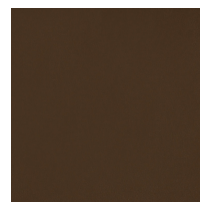
Ginger



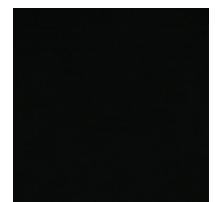
Quartz



Sketch



Manor



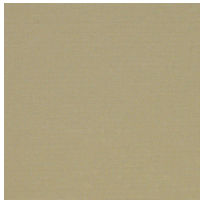
Nero



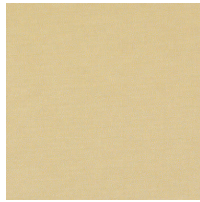
Upholstery - Momentum - Silica Tech - Grade 6

Note: EKO reserves the right to reject fabrics when necessary if the quality or construction is not satisfactory for intended products. [Click here to order samples](#)

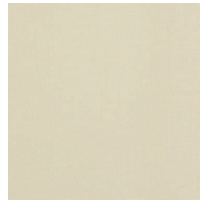
51% Silicone; 49% Polyester; Finish: NA; Width: 54"; Abrasion 270,000 Double Rubs



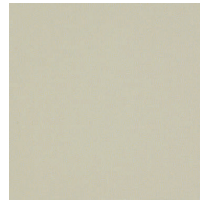
Vintage



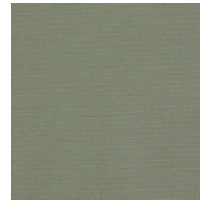
Macadamia



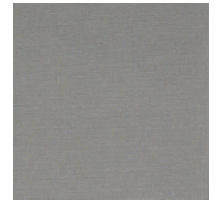
Paloma



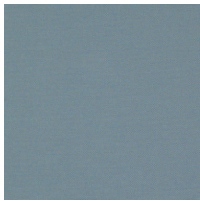
Fog



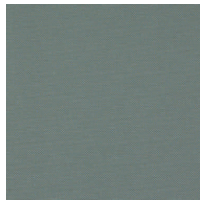
Verdigris



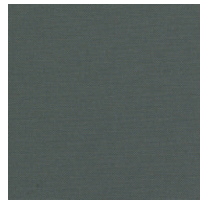
Gleam



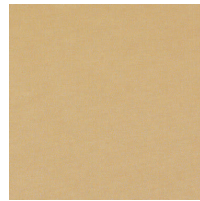
Calm



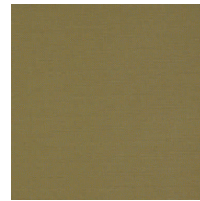
Mineralize



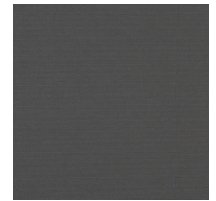
Urbanite



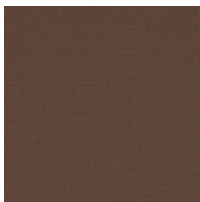
Sandstone



Willow



Khol



Sablewood



Upholstery - Ultrafabrics - Brisa - Grade 6

Note: EKO reserves the right to reject fabrics when necessary if the quality or construction is not satisfactory for intended products.

[Click here to order samples](#)

100% Polyurethane Surface with 100% Reinforced Rayon Backing; Finish: NA; Width: 54";
Abrasion 200,000 Double Rubs



Birch



White



Fog



Camel



Caramel



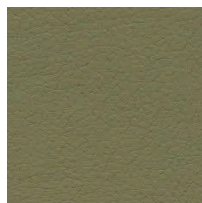
Cinnabar



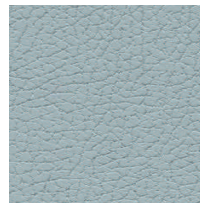
Garbanzo



Celery



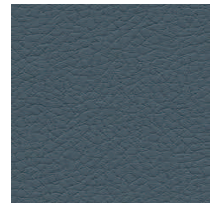
Sweet Pea



Sterling Blue



Skyway



Cambridge
Blue



Bone



New Sand



Quicksilver



Ash



Salsa



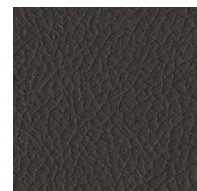
Canyon



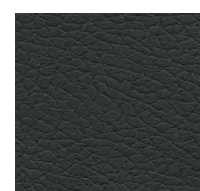
Shiitake



Bark



Coffee Bean



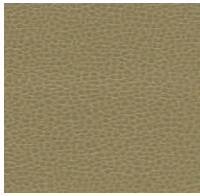
Black Onyx



Upholstery - Ultrafabrics - Promessa - Grade 6

Note: EKO reserves the right to reject fabrics when necessary if the quality or construction is not satisfactory for intended products. [Click here to order samples](#)

100% Polyurethane Surface with 100% Reinforced Rayon Backing; Finish: NA; Width: 54"; Abrasion 200,000



Briarwood



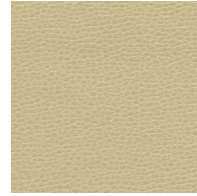
Snow



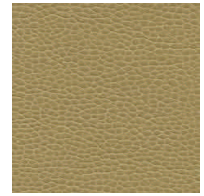
Tusk



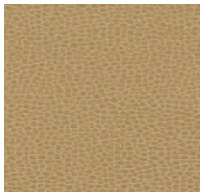
Pearl



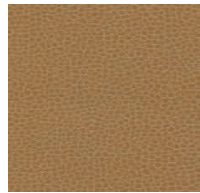
Linen



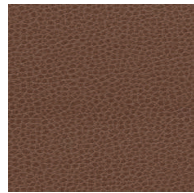
Linseed



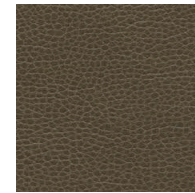
Cashmere



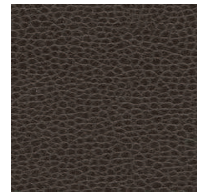
Camel



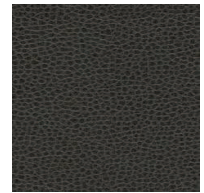
Tudor



Mesquite



Horsehair



Ebony

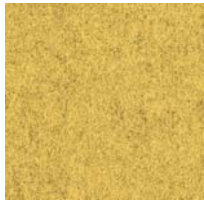


Upholstery - Camira - Blazer - Grade 7

Note: EKO reserves the right to reject fabrics when necessary if the quality or construction is not satisfactory for intended products.

[Click here to order samples](#)

100% Pure new wool; Finish: NA; Width: 54"; Abrasion 30,000 Double Rubs



Dunhurst



Bryanston



Aston



Goldsmith



Oriol



Handcross



Heriot Watt



Giggleswick



Woodhouse



Balliol



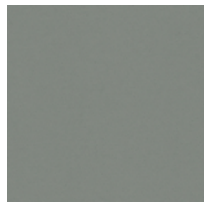
Eton



Durham



Silverdale



Ampleforth



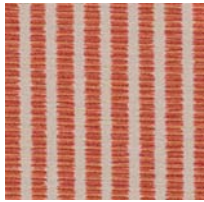
Upholstery - Knoll - Zipline - Grade 7

Repeat: 8"V x .5"H

Note: EKO reserves the right to reject fabrics when necessary if the quality or construction is not satisfactory for intended products.

[Click here to order samples](#)

Solution Dyed Nylon 100.0%; Finish: Teflon; Width: 54"; Abrasion 100,000 Double Rubs



Punch



Tangerine



Pear



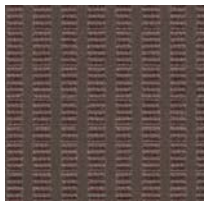
Spa



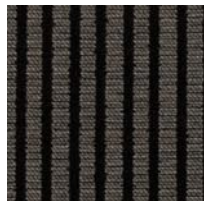
Blazer



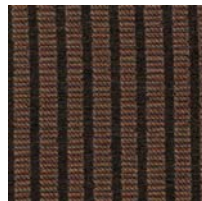
Tusk



Larkspur



Carbon



Potpourri

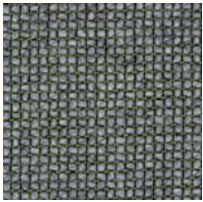


Upholstery - Camira - Craggan - Grade 8

Note: EKO reserves the right to reject fabrics when necessary if the quality or construction is not satisfactory for intended products.

[Click here to order samples](#)

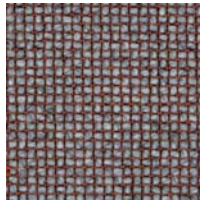
100% Pure New Wool; Finish: NA; Width: 54"; Abrasion 30,000 Double Rubs



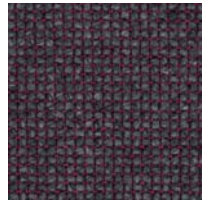
Marsh



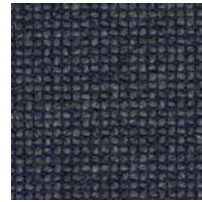
Cairn



Bracken



Fell



Foss



Upholstery - Helvetia - Basic - Grade C1

Note: EKO reserves the right to reject fabrics when necessary if the quality or construction is not satisfactory for intended products. [Click here to order samples](#)



Bark
BA50



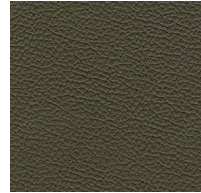
Black
BA90



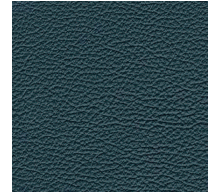
Burgundy
BA68



Butter
BA28



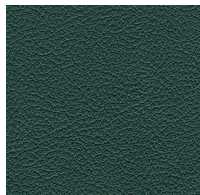
Caffeine
BA75



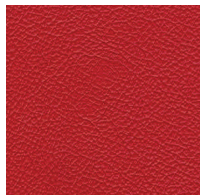
Cobalt
BA82



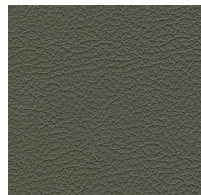
Coffee
BA74



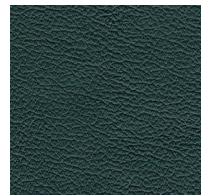
Evergreen
BA79



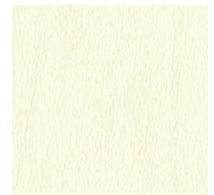
Flame
BA40



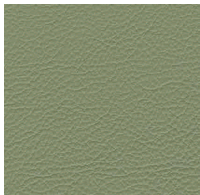
Fudge
BA73



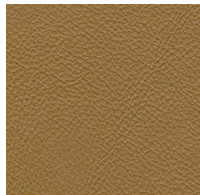
Ink
BA85



Ivory
BA20



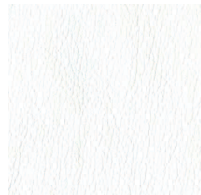
Olive
BA45



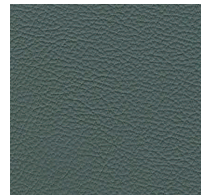
Saddle
BA34



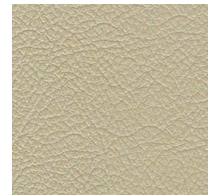
Shell White
BA15



Snow
BA10



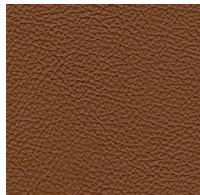
Steel
BA60



Stone
BA30



Tempest
BA54



Terracotta
BA56



Upholstery - Helvetia - Fundamental - Grade C2

Note: EKO reserves the right to reject fabrics when necessary if the quality or construction is not satisfactory for intended products.

[Click here to order samples.](#)



White
FL10



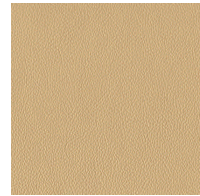
Winter White
FL11



Buff
FL12



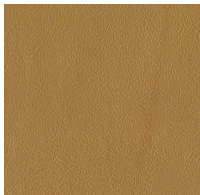
French Vanilla
FL14



Sesame
FL15



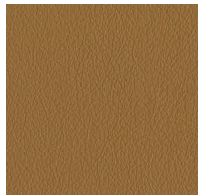
Dijon
FL18



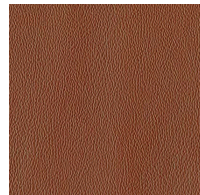
Tan
FL20



Khaki
FL22



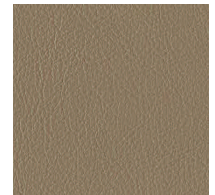
Saddle
FL25



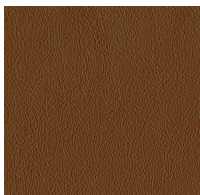
Terracotta
FL28



Rust
FL29



Beige
FL30



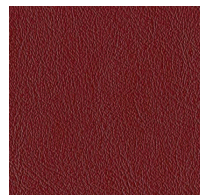
Truffle
FL36



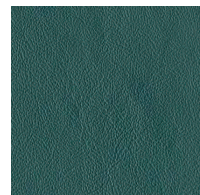
Graphite
FL40



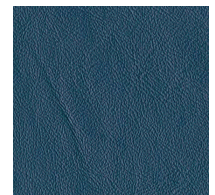
Salon
FL48



Red
FL53



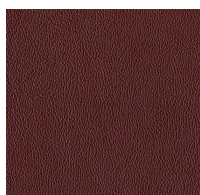
StandardGreen
FL55



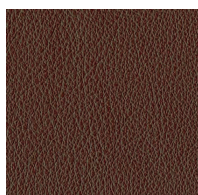
Classic Blue
FL60



Plantaoon
FL62



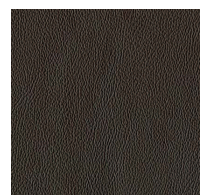
Cordovan
FL68



StandardBrown
FL72



Brown
FL75



Walnut
FL79

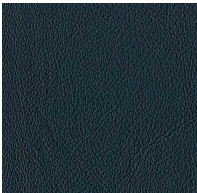


Classic Royal
FL80

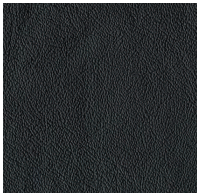


Upholstery - Helvetia - Fundamental - Grade C2

Note: EKO reserves the right to reject fabrics when necessary if the quality or construction is not satisfactory for intended products.



Navy
FL82



Black
FL90



Upholstery - Helvetia - Hampton - Grade C3

Note: EKO reserves the right to reject fabrics when necessary if the quality or construction is not satisfactory for intended products.

[Click here to order samples.](#)



White
H100



Amethyst
H154



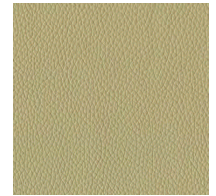
Basil
H163



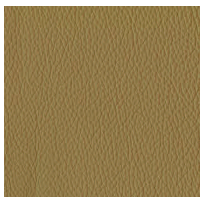
Silverdust
H220



Ivory
H223



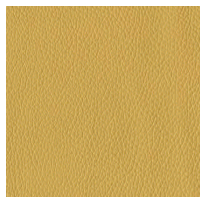
Cashew
H259



Hazelnut
H289



Vellum
H295



Amber
H342



Cactus
H410



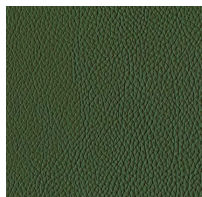
Okra
H430



Chartreuse
H435



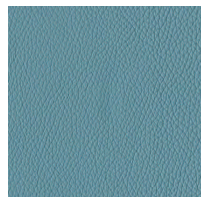
Clover
H450



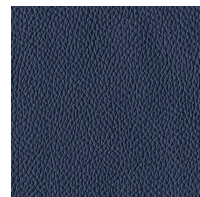
Pine
H490



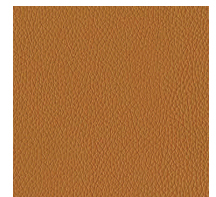
Azure
H510



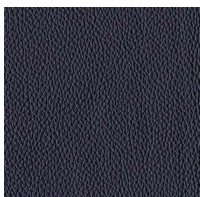
Moonstone
H550



Baltic
H570



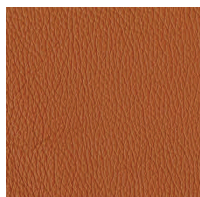
Copper
H590



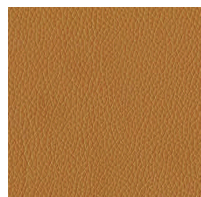
Eggplant
H599



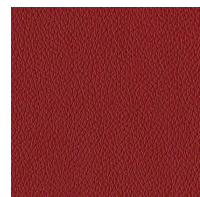
Blaze
H600



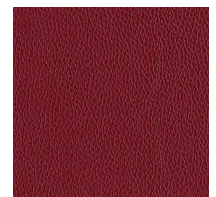
Sienna
H610



Almond
H622



Poppy
H660

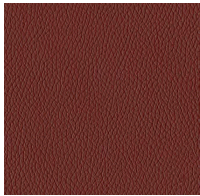


Scarlet
H670



Upholstery - Helvetia - Hampton - Grade C3

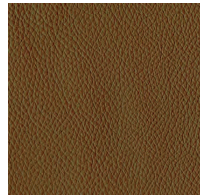
Note: EKO reserves the right to reject fabrics when necessary if the quality or construction is not satisfactory for intended products.



Madder
H690



Mocha
H730



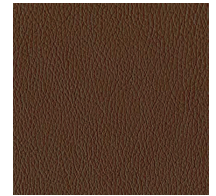
Cappuccino
H735



Sterling
H745



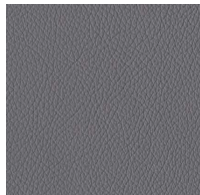
Sepia
H780



Coco
H790



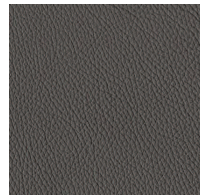
Limestone
H800



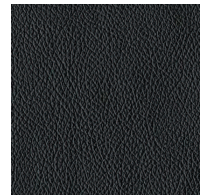
Heather
H801



Smoke
H820



Wisteria
H870



Black
H900





Veneer Finishes

Note: Standard veneer finishes below. Custom finish match available. Contact customer care for details.

[Click here to order chip samples](#)

Other finishes may be chosen for our products, please contact customer care for pricing and availability.



Light Maple



Cinnamon
Cherry



Heritage
Walnut



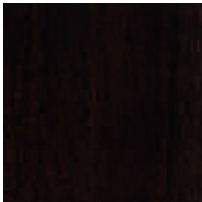
Traditional
Walnut



Royal
Mahogany



Bourbon
Mahogany



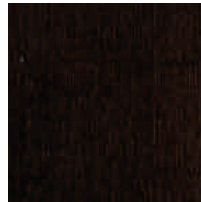
Appalachian
Mahogany



Imperial
Cherry



Light Walnut



Ebony Walnut



Black
Low Sheen

New 2013 Veneer Finishes



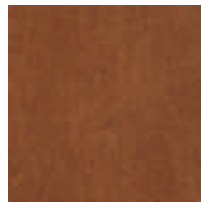
Natural
on Maple



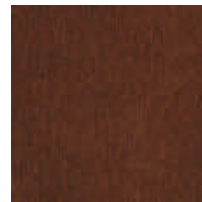
Monticello
on Maple



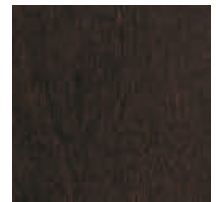
Huntington
on Maple



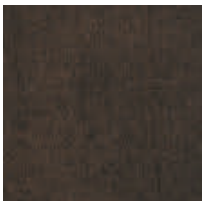
Wild Cherry
on Maple



Versailles
On Maple



Empire
On Maple



Cafelle
on Maple



High-Pressure Laminate Palette - Core Solid

Note: Standard laminates shown below. See High-Pressure Laminate Matrix for availability by product.

[Click here to order memo samples](#)

Other laminates may be chosen for our products, please contact customer care for pricing and availability.



Black



Dover White



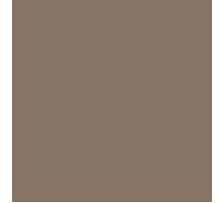
Pearl



Folkstone



Platinum



Earth



Citadel



Graphite

High-Pressure Laminate Palette - Classic Patterns

Note: Standard laminates shown below. See High-Pressure Laminate Matrix for availability by product.

[Click here to order memo samples](#)

Other laminates may be chosen for our products, please contact customer care for pricing and availability.



White Nebula



Grey Nebula



Graphite
Nebula



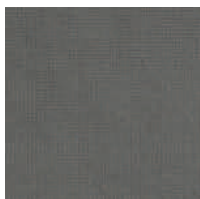
Pewter Mesh



Grey Mesh



Sheer Mesh



Steel Mesh



Gilded Mesh



High-Pressure Laminate Palette - Classic Wood Grain

Note: Standard laminates shown below. See High-Pressure Laminate Matrix for availability by product.

[Click here to order memo samples](#)

Other laminates may be chosen for our products, please contact customer care for pricing and availability.



Fusion Maple



Monticello
Maple



Huntington
Maple



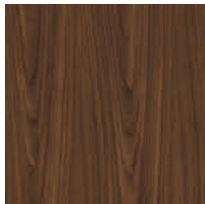
Wild Cherry



Versailles
Anigre



Empire
Mahogany



Montana
Walnut



Cafelle

High-Pressure Laminate Palette - Evolving Wood Grain

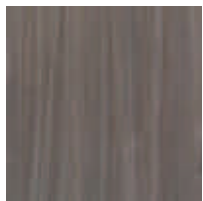
Note: Standard laminates shown below. See High-Pressure Laminate Matrix for availability by product.

[Click here to order memo samples](#)

Other laminates may be chosen for our products, please contact customer care for pricing and availability.



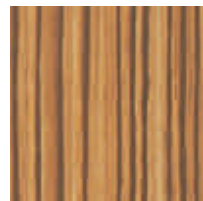
Millennium Oak



Smoky Brown
Pear



Oiled Walnut



Zebrano



Chestnut
Woodline



Dunewood



Metal Paint

Note: Standard metal paint colors shown below. See Metal Paint Matrix for availability by product.

[Click here to order memo samples](#)

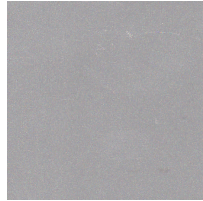
Other metal paint colors may be chosen for our products, please contact customer care for pricing and availability.



Raven



Charcoal Gloss



Chrome



Silver



Oatmeal Gloss



Milk Gloss



3mm Edgeband - Classic Wood Grain

Note: Standard 3mm edgebands shown below. See High-Pressure Laminate Matrix for availability by product.

[Click here to order memo samples](#)

Other laminates may be chosen for our products, please contact customer care for pricing and availability.



Fusion Maple



Monticello
Maple



Huntington
Maple



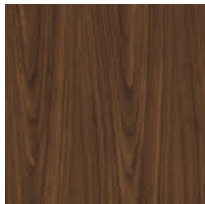
Wild Cherry



Versailles
Anigre



Empire
Mahogany



Montana
Walnut



Cafelle

3mm Edgeband - Core Solids

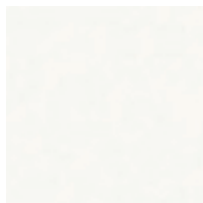
Note: Standard 3mm edgebands shown below. See High-Pressure Laminate Matrix for availability by product.

[Click here to order memo samples](#)

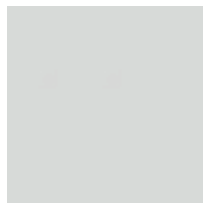
Other laminates may be chosen for our products, please contact customer care for pricing and availability.



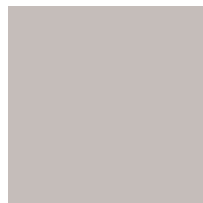
Black



Dover White



Folkstone



Platinum



Graphite



Tablet Edgeband T-Mold

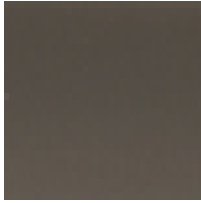
Note: Standard t-mold for tablets shown below.

[Click here to order material samples](#)

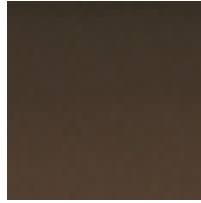
Other t-molds may be chosen for our products, please contact customer care for pricing, minimum and availability.



Black



Carbon



Coffee



Almond



White