

COLLABORATIVE LOUNGE, BENCHES AND TABLES

CLICK FOR : [CONSTRUCTION DETAILS](#), [SURFACES](#), [TEXTILES](#), [GRADED-IN TEXTILE DATABASE](#), [WARRANTY](#), [FREIGHT](#)

AMITY

DESIGN: C&H WASHINGTON

ORDER OPTIONS



SEATING AND TABLES FEATURE FULL METAL POWDER-COAT BASES IN A CHOICE OF THREE STANDARD FINISHES. PREMIUM POWDER-COAT FINISHES ARE AVAILABLE ON BASES FOR UPCHARGE. WEIGHT CAPACITY IS 350 LBS. PER SEAT. WOOD GRAIN LAMINATE TABLES STANDARD WITH EXPOSED PLY EDGE WITH CLEAR COAT. SOLID LAMINATE TABLES STANDARD WITH EXPOSED PLY EDGE PAINTED TO MATCH TOP COLOR.

POWDER-COAT FINISH LEGS



ADD \$0 LIST

SPECIFY: COLOR NAME

METAL LEGS ARE AVAILABLE WITH A CHOICE OF THREE STANDARD POWDER-COAT FINISHES. PREMIUM POWDER-COAT FINISHES ARE AVAILABLE FOR UPCHARGE.



PC4 SILVER
IN STOCK



PC5 CHROME



PC6 RAVEN

TABLE TOP LAMINATE OPTIONS



ADD \$0 LIST, OTHER LAMINATES AVAILABLE , CONTACT CSR@EKOCONTRACT.COM FOR PRICING.

SPECIFY: BY MODEL NUMBER LISTED IN PRICE LIST

LAMINATE TABLE TOPS ARE AVAILABLE IN:



DESIGNER WHITE



DOVE GRAY



FUSION MAPLE



MONTICELLO MAPLE

LAMINATE TABLE TOPS, SPECIFY:

(L/EE) WOOD GRAIN LAMINATE TABLES STANDARD WITH EXPOSED PLY EDGE FINISHED IN CLEAR COAT.
(L/PE) SOLID LAMINATE TABLES STANDARD WITH EXPOSED PLY EDGE PAINTED TO MATCH TOP COLOR.

ALL TABLE TOPS STANDARD WITH HORIZONTAL GRAIN DIRECTION.

GANGING DEVICE

ADD \$70 LIST, SPECIFY: AG

COLLABORATIVE LOUNGE, BENCHES AND TABLES

CLICK FOR : [CONSTRUCTION DETAILS](#), [SURFACES](#), [TEXTILES](#), [GRADED-IN TEXTILE DATA BASE](#), [WARRANTY](#), [FREIGHT](#)

SEATING AND TABLES FEATURE FULL METAL POWDER-COAT BASES IN A CHOICE OF THREE STANDARD FINISHES. PREMIUM POWDER-COAT FINISHES ARE AVAILABLE ON BASES FOR UPCHARGE. WEIGHT CAPACITY IS 350 LBS. PER SEAT. WOOD GRAIN LAMINATE TABLES STANDARD WITH EXPOSED PLY EDGE WITH CLEAR COAT. SOLID LAMINATE TABLES STANDARD WITH EXPOSED PLY EDGE PAINTED TO MATCH TOP COLOR.

AMITY

DESIGN: C&H WASHINGTON

49000
GUEST CHAIR



TEXTILE LIST PRICE

COM	COL	G 1	G 2	G 3	G 4	G 5	G 6	G 7	G 8	G 9	G 10	G 11
1860	2070	1930	2070	2157	2245	2332	2419	2507	2682	2857	3032	3207

W 25 D 25 H 34.5 SH 18.5 AH 25.5-27.5 (INCHES) COM (YDS) 3.5 COL (SQ FT) 70

ORDER OPTIONS: POWDER-COAT LEGS

49001
LOUNGE CHAIR



1976	2256	2052	2256	2379	2501	2629	2752	2880	3131	3376	3626	3906
------	------	------	------	------	------	------	------	------	------	------	------	------

W 31 D 28 H 35 SH 17.5 AH 27-28 (INCHES) COM (YDS) 5 COL (SQ FT) 100

ORDER OPTIONS: POWDER-COAT LEGS

49002
LOVESEAT



2909	3259	2973	3259	3440	3615	3790	3985	4168	4542	4891	5247	5626
------	------	------	------	------	------	------	------	------	------	------	------	------

W 56 D 28 H 35 SH 17.5 AH 27-28 (INCHES) COM (YDS) 7 COL (SQ FT) 140

ORDER OPTIONS: POWDER-COAT LEGS

49003
SOFA



3842	4343	3982	4343	4547	4775	5008	5241	5474	5888	6355	6821	7223
------	------	------	------	------	------	------	------	------	------	------	------	------

W 84 D 28 H 35 SH 17.5 AH 27-28 (INCHES) COM (YDS) 8.5 COL (SQ FT) 170

ORDER OPTIONS: POWDER-COAT LEGS

49005
ARMLESS LOUNGE CHAIR



1743	1976	1813	1976	2070	2175	2274	2373	2478	2676	2886	3090	3323
------	------	------	------	------	------	------	------	------	------	------	------	------

W 28 D 28 H 35 SH 17.5 (INCHES) COM (YDS) 3.5 COL (SQ FT) 70

ORDER OPTIONS: POWDER-COAT LEGS

49006
CORNER LOUNGE CHAIR



1860	2186	1982	2186	2320	2443	2565	2682	2828	3061	3323	3585	3842
------	------	------	------	------	------	------	------	------	------	------	------	------

W 28 D 28 H 35 SH 17.5 (INCHES) COM (YDS) 5 COL (SQ FT) 100

ORDER OPTIONS: POWDER-COAT LEGS

UPHOLSTERY DIRECTION MUST BE SPECIFIED ON CORNER UNITS WHEN PATTERNED FABRICS ARE SPECIFIED. IN THE ABSENCE OF SPECIFIC INSTRUCTIONS, EKO RESERVES THE RIGHT TO UPHOLSTER UNITS AT OUR DISCRETION.

COLLABORATIVE LOUNGE, BENCHES AND TABLES

CLICK FOR : [CONSTRUCTION DETAILS](#), [SURFACES](#), [TEXTILES](#), [GRADED-IN TEXTILE DATA BASE](#), [WARRANTY](#), [FREIGHT](#)

SEATING AND TABLES FEATURE FULL METAL POWDER-COAT BASES IN A CHOICE OF THREE STANDARD FINISHES. PREMIUM POWDER-COAT FINISHES ARE AVAILABLE ON BASES FOR UPCHARGE. WEIGHT CAPACITY IS 350 LBS. PER SEAT. WOOD GRAIN LAMINATE TABLES STANDARD WITH EXPOSED PLY EDGE WITH CLEAR COAT. SOLID LAMINATE TABLES STANDARD WITH EXPOSED PLY EDGE PAINTED TO MATCH TOP COLOR.

AMITY

DESIGN: C&H WASHINGTON

49004R

RIGHT ARM LOVESEAT



TEXTILE LIST PRICE

COM	COL	G 1	G 2	G 3	G 4	G 5	G 6	G 7	G 8	G 9	G 10	G 11
2734	3084	2798	3084	3265	3440	3615	3807	3994	4367	4716	5072	5451

W 56 D 28 H 35 SH 17.5 AH 27-28 (INCHES) COM (YDS) 6.5 COL (SQ FT) 123

ORDER OPTIONS: POWDER-COAT LEGS

49004L

LEFT ARM LOVESEAT



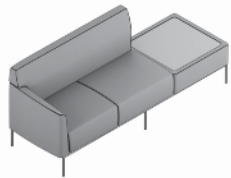
2734	3084	2798	3084	3265	3440	3615	3807	3994	4367	4716	5072	5451
------	------	------	------	------	------	------	------	------	------	------	------	------

W 56 D 28 H 35 SH 17.5 AH 27-28 (INCHES) COM (YDS) 6.5 COL (SQ FT) 123

ORDER OPTIONS: POWDER-COAT LEGS

49011R

RIGHT ARM LOVESEAT/OTTOMAN



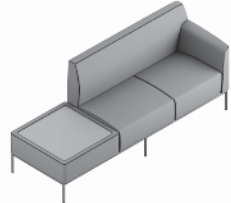
3725	4075	3778	4075	4268	4454	4658	4833	5020	5399	5778	6174	6588
------	------	------	------	------	------	------	------	------	------	------	------	------

W 84 D 28 H 35 SH 17.5 AH 27-28 (INCHES) COM (YDS) 7.5 COL (SQ FT) 150

ORDER OPTIONS: LAMINATE TOP, POWDER-COAT LEGS

49011L

LEFT ARM LOVESEAT/OTTOMAN



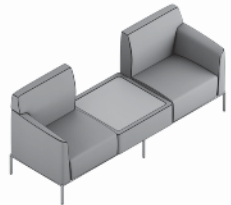
3725	4075	3778	4075	4268	4454	4658	4833	5020	5399	5778	6174	6588
------	------	------	------	------	------	------	------	------	------	------	------	------

W 84 D 28 H 35 SH 17.5 AH 27-28 (INCHES) COM (YDS) 7.5 COL (SQ FT) 150

ORDER OPTIONS: LAMINATE TOP, POWDER-COAT LEGS

49013

CHAIR/OTTOMAN/CHAIR



3725	4075	3778	4075	4268	4454	4658	4833	5020	5399	5778	6174	6588
------	------	------	------	------	------	------	------	------	------	------	------	------

W 84 D 28 H 35 SH 17.5 AH 27-28 (INCHES) COM (YDS) 7.5 COL (SQ FT) 150

ORDER OPTIONS: LAMINATE TOP, POWDER-COAT LEGS

COLLABORATIVE LOUNGE, BENCHES AND TABLES

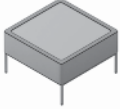
CLICK FOR : [CONSTRUCTION DETAILS](#), [SURFACES](#), [TEXTILES](#), [GRADED-IN TEXTILE DATA BASE](#), [WARRANTY](#), [FREIGHT](#)

SEATING AND TABLES FEATURE FULL METAL POWDER-COAT BASES IN A CHOICE OF THREE STANDARD FINISHES. PREMIUM POWDER-COAT FINISHES ARE AVAILABLE ON BASES FOR UPCHARGE. WEIGHT CAPACITY IS 350 LBS. PER SEAT. WOOD GRAIN LAMINATE TABLES STANDARD WITH EXPOSED PLY EDGE WITH CLEAR COAT. SOLID LAMINATE TABLES STANDARD WITH EXPOSED PLY EDGE PAINTED TO MATCH TOP COLOR.

AMITY

DESIGN: C&H WASHINGTON

49007
OTTOMAN TABLE



TEXTILE LIST PRICE

COM	COL	G 1	G 2	G 3	G 4	G 5	G 6	G 7	G 8	G 9	G 10	G 11
1685	1801	1737	1801	1836	18871	1912	1947	1982	2058	2140	2227	2291

W 28 D 28 H 16.5 (INCHES) COM (YDS) 1.5 COL (SQ FT) 30

ORDER OPTIONS: LAMINATE TOP, POWDER-COAT LEGS

49008
OTTOMAN

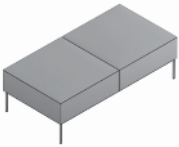


1253	1440	1341	1440	1498	1557	1621	1679	1743	1866	1982	2128	2274
------	------	------	------	------	------	------	------	------	------	------	------	------

W 28 D 28 H 16.5 (INCHES) COM (YDS) 2.5 COL (SQ FT) 50

ORDER OPTIONS: POWDER-COAT LEGS

49009
TWO SEAT BENCH

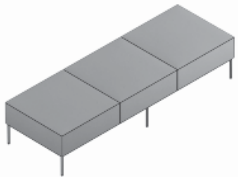


2157	2373	2210	2373	2472	2571	2664	2763	2863	3055	3236	3492	3673
------	------	------	------	------	------	------	------	------	------	------	------	------

W 56 D 28 H 16.5 (INCHES) COM (YDS) 4 COL (SQ FT) 80

ORDER OPTIONS: POWDER-COAT LEGS

49010
THREE SEAT BENCH

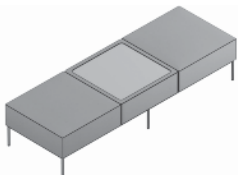


2915	3230	3026	3230	3346	3463	3580	3702	3819	4069	4314	4547	4839
------	------	------	------	------	------	------	------	------	------	------	------	------

W 84 D 28 H 16.5 (INCHES) COM (YDS) 5 COL (SQ FT) 100

ORDER OPTIONS: POWDER-COAT LEGS

49012
BENCH/OTTOMAN/BENCH



3142	3428	3236	3428	3550	3667	3790	3912	4034	4273	4518	4775	5072
------	------	------	------	------	------	------	------	------	------	------	------	------

W 84 D 28 H 16.5 (INCHES) COM (YDS) 5 COL (SQ FT) 100

ORDER OPTIONS: LAMINATE TOP, POWDER-COAT LEGS

COLLABORATIVE LOUNGE, BENCHES AND TABLES

CLICK FOR : [CONSTRUCTION DETAILS](#), [SURFACES](#), [TEXTILES](#), [GRADED-IN TEXTILE DATA BASE](#), [WARRANTY](#), [FREIGHT](#)

SEATING AND TABLES FEATURE FULL METAL POWDER-COAT BASES IN A CHOICE OF THREE STANDARD FINISHES. PREMIUM POWDER-COAT FINISHES ARE AVAILABLE ON BASES FOR UPCHARGE. WEIGHT CAPACITY IS 350 LBS. PER SEAT. WOOD GRAIN LAMINATE TABLES STANDARD WITH EXPOSED PLY EDGE WITH CLEAR COAT. SOLID LAMINATE TABLES STANDARD WITH EXPOSED PLY EDGE PAINTED TO MATCH TOP COLOR.

AMITY

DESIGN: C&H WASHINGTON

LIST PRICE

LAMINATE (L/EE)
WOOD LAMINATE WITH
EXPOSED CLEAR COAT EDGE

LAMINATE (L/PE)
SOLID LAMINATE COLOR WITH
PAINTED EDGE

49020
SQUARE COFFEE TABLE



1780

1795

W 42 D 42 H 15 (INCHES)

ORDER OPTIONS: LAMINATE TOP, POWDER-COAT LEGS

SOLID SURFACE TOP AVAILABLE. ADD \$1000 LIST. **WILL ADD 1/2" TO HEIGHT

49021
ROUND COFFEE TABLE



1720

1740

W 42 D 42 H 15 (INCHES)

ORDER OPTIONS: LAMINATE TOP, POWDER-COAT LEGS

SOLID SURFACE TOP AVAILABLE. ADD \$1000 LIST. **WILL ADD 1/2" TO HEIGHT

49022
SQUARE END TABLE



1395

1415

W 22 D 22 H 19.75 (INCHES)

ORDER OPTIONS: LAMINATE TOP, POWDER-COAT LEGS

SOLID SURFACE TOP AVAILABLE. ADD \$300 LIST. **WILL ADD 1/2" TO HEIGHT

49024
SQUARE END TABLE TALL



1469

1491

W 19 D 19 H 22.5 (INCHES)

ORDER OPTIONS: LAMINATE TOP, POWDER-COAT LEGS

SOLID SURFACE TOP AVAILABLE. ADD \$300 LIST. **WILL ADD 1/2" TO HEIGHT

49023
ROUND END TABLE



1395

1427

W 20 D 20 H 19.75 (INCHES)

ORDER OPTIONS: LAMINATE TOP, POWDER-COAT LEGS

SOLID SURFACE TOP AVAILABLE. ADD \$300 LIST. **WILL ADD 1/2" TO HEIGHT