

COLLABORATIVE LOUNGE, BENCHES AND TABLES

CLICK FOR : [CONSTRUCTION DETAILS](#), [SURFACES](#), [TEXTILES](#), [GRADED-IN TEXTILE DATABASE](#), [WARRANTY](#), [FREIGHT](#)

AMITY

DESIGN: C&H WASHINGTON

ORDER OPTIONS



SEATING AND TABLES FEATURE FULL METAL POWDER-COAT BASES IN A CHOICE OF THREE STANDARD FINISHES. PREMIUM POWDER-COAT FINISHES ARE AVAILABLE ON BASES FOR UPCHARGE. WEIGHT CAPACITY IS 350 LBS. PER SEAT. WOOD GRAIN LAMINATE TABLES STANDARD WITH EXPOSED PLY EDGE WITH CLEAR COAT. SOLID LAMINATE TABLES STANDARD WITH EXPOSED PLY EDGE PAINTED TO MATCH TOP COLOR.

POWDER-COAT FINISH LEGS



ADD \$0 LIST

SPECIFY: COLOR NAME

METAL LEGS ARE AVAILABLE WITH A CHOICE OF THREE STANDARD POWDER-COAT FINISHES. PREMIUM POWDER-COAT FINISHES ARE AVAILABLE FOR UPCHARGE.



PC4 SILVER
IN STOCK



PC5 CHROME



PC6 RAVEN

TABLE TOP LAMINATE OPTIONS



ADD \$0 LIST, OTHER LAMINATES AVAILABLE , CONTACT CSR@EKOCONTRACT.COM FOR PRICING.

SPECIFY: BY MODEL NUMBER LISTED IN PRICE LIST

LAMINATE TABLE TOPS ARE AVAILABLE IN:



DESIGNER WHITE



DOVE GRAY



FUSION MAPLE



MONTICELLO MAPLE



MONTANA WALNUT

LAMINATE TABLE TOPS, SPECIFY:

L/EE - TABLES STANDARD WITH EXPOSED PLY EDGE FINISHED IN CLEAR COAT. USED MOSTLY WITH NON-STANDARD LAMINATES

L/PE - TABLES STANDARD WITH PAINTED EDGE TO MATCH TOP COLOR.

ALL TABLE TOPS STANDARD WITH HORIZONTAL GRAIN DIRECTION.

TABLE TOP 2511 OPTIONS

GANGING DEVICE

ADD \$70 LIST, SPECIFY: AG

COLLABORATIVE LOUNGE, BENCHES AND TABLES

CLICK FOR : [CONSTRUCTION DETAILS](#), [SURFACES](#), [TEXTILES](#), [GRADED-IN TEXTILE DATA BASE](#), [WARRANTY](#), [FREIGHT](#)

SEATING AND TABLES FEATURE FULL METAL POWDER-COAT BASES IN A CHOICE OF THREE STANDARD FINISHES. PREMIUM POWDER-COAT FINISHES ARE AVAILABLE ON BASES FOR UPCHARGE. WEIGHT CAPACITY IS 350 LBS. PER SEAT. WOOD GRAIN LAMINATE TABLES STANDARD WITH EXPOSED PLY EDGE WITH CLEAR COAT. SOLID LAMINATE TABLES STANDARD WITH EXPOSED PLY EDGE PAINTED TO MATCH TOP COLOR.

AMITY

DESIGN: C&H WASHINGTON

49000
GUEST CHAIR



TEXTILE LIST PRICE

COM	COL	G 1	G 2	G 3	G 4	G 5	G 6	G 7	G 8	G 9	G 10	G 11
1972	2194	2046	2194	2286	2380	2472	2564	2657	2843	3028	3214	3399

W 25 D 25 H 34.5 SH 18.5 AH 25.5-27.5 (INCHES) COM (YDS) 3.5 COL (SQ FT) 70

ORDER OPTIONS: POWDER-COAT LEGS

49001
LOUNGE CHAIR



2095	2391	2175	2391	2522	2651	2787	2917	3053	3319	3579	3844	4140
------	------	------	------	------	------	------	------	------	------	------	------	------

W 31 D 28 H 35 SH 17.5 AH 27-28 (INCHES) COM (YDS) 5 COL (SQ FT) 100

ORDER OPTIONS: POWDER-COAT LEGS

49002
LOVESEAT



3084	3455	3151	3455	3646	3832	4017	4224	4418	4815	5184	5562	5964
------	------	------	------	------	------	------	------	------	------	------	------	------

W 56 D 28 H 35 SH 17.5 AH 27-28 (INCHES) COM (YDS) 7 COL (SQ FT) 140

ORDER OPTIONS: POWDER-COAT LEGS

49003
SOFA



4073	4604	4221	4604	4820	5062	5308	5555	5802	6241	6736	7230	7656
------	------	------	------	------	------	------	------	------	------	------	------	------

W 84 D 28 H 35 SH 17.5 AH 27-28 (INCHES) COM (YDS) 8.5 COL (SQ FT) 170

ORDER OPTIONS: POWDER-COAT LEGS

49005
ARMLESS LOUNGE CHAIR



1848	2095	1922	2095	2194	2306	2410	2515	2627	2837	3059	3275	3522
------	------	------	------	------	------	------	------	------	------	------	------	------

W 28 D 28 H 35 SH 17.5 (INCHES) COM (YDS) 3.5 COL (SQ FT) 70

ORDER OPTIONS: POWDER-COAT LEGS

49006
CORNER LOUNGE CHAIR



1972	2317	2101	2317	2459	2590	2719	2843	2998	3245	3522	3800	4073
------	------	------	------	------	------	------	------	------	------	------	------	------

W 28 D 28 H 35 SH 17.5 (INCHES) COM (YDS) 5 COL (SQ FT) 100

ORDER OPTIONS: POWDER-COAT LEGS

UPHOLSTERY DIRECTION MUST BE SPECIFIED ON CORNER UNITS WHEN PATTERNED FABRICS ARE SPECIFIED. IN THE ABSENCE OF SPECIFIC INSTRUCTIONS, EKO RESERVES THE RIGHT TO UPHOLSTER UNITS AT OUR DISCRETION.

COLLABORATIVE LOUNGE, BENCHES AND TABLES

CLICK FOR : [CONSTRUCTION DETAILS](#), [SURFACES](#), [TEXTILES](#), [GRADED-IN TEXTILE DATA BASE](#), [WARRANTY](#), [FREIGHT](#)

SEATING AND TABLES FEATURE FULL METAL POWDER-COAT BASES IN A CHOICE OF THREE STANDARD FINISHES. PREMIUM POWDER-COAT FINISHES ARE AVAILABLE ON BASES FOR UPCHARGE. WEIGHT CAPACITY IS 350 LBS. PER SEAT. WOOD GRAIN LAMINATE TABLES STANDARD WITH EXPOSED PLY EDGE WITH CLEAR COAT. SOLID LAMINATE TABLES STANDARD WITH EXPOSED PLY EDGE PAINTED TO MATCH TOP COLOR.

AMITY

DESIGN: C&H WASHINGTON

49004R

RIGHT ARM LOVESEAT



TEXTILE LIST PRICE

COM	COL	G 1	G 2	G 3	G 4	G 5	G 6	G 7	G 8	G 9	G 10	G 11
2898	3269	2966	3269	3461	3646	3832	4035	4234	4629	4999	5376	5778

W 56 D 28 H 35 SH 17.5 AH 27-28 (INCHES) COM (YDS) 6.5 COL (SQ FT) 123

ORDER OPTIONS: POWDER-COAT LEGS

49004L

LEFT ARM LOVESEAT



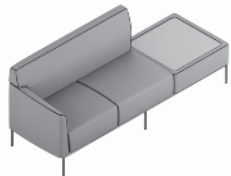
2898	3269	2966	3269	3461	3646	3832	4035	4234	4629	4999	5376	5778
------	------	------	------	------	------	------	------	------	------	------	------	------

W 56 D 28 H 35 SH 17.5 AH 27-28 (INCHES) COM (YDS) 6.5 COL (SQ FT) 123

ORDER OPTIONS: POWDER-COAT LEGS

49011R

RIGHT ARM LOVESEAT/OTTOMAN



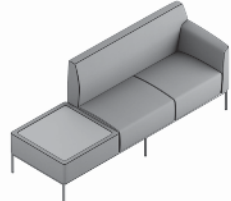
3949	4320	4005	4320	4524	4721	4937	5123	5321	5723	6125	6544	6983
------	------	------	------	------	------	------	------	------	------	------	------	------

W 84 D 28 H 35 SH 17.5 AH 27-28 (INCHES) COM (YDS) 7.5 COL (SQ FT) 150

ORDER OPTIONS: LAMINATE TOP, POWDER-COAT LEGS

49011L

LEFT ARM LOVESEAT/OTTOMAN



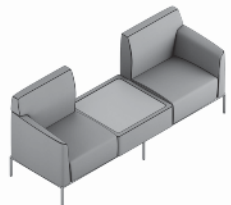
3949	4320	4005	4320	4524	4721	4937	5123	5321	5723	6125	6544	6983
------	------	------	------	------	------	------	------	------	------	------	------	------

W 84 D 28 H 35 SH 17.5 AH 27-28 (INCHES) COM (YDS) 7.5 COL (SQ FT) 150

ORDER OPTIONS: LAMINATE TOP, POWDER-COAT LEGS

49013

CHAIR/OTTOMAN/CHAIR



3949	4320	4005	4320	4524	4721	4937	5123	5321	5723	6125	6544	6983
------	------	------	------	------	------	------	------	------	------	------	------	------

W 84 D 28 H 35 SH 17.5 AH 27-28 (INCHES) COM (YDS) 7.5 COL (SQ FT) 150

ORDER OPTIONS: LAMINATE TOP, POWDER-COAT LEGS

COLLABORATIVE LOUNGE, BENCHES AND TABLES

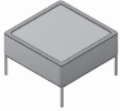
CLICK FOR : [CONSTRUCTION DETAILS](#), [SURFACES](#), [TEXTILES](#), [GRADED-IN TEXTILE DATA BASE](#), [WARRANTY](#), [FREIGHT](#)

SEATING AND TABLES FEATURE FULL METAL POWDER-COAT BASES IN A CHOICE OF THREE STANDARD FINISHES. PREMIUM POWDER-COAT FINISHES ARE AVAILABLE ON BASES FOR UPCHARGE. WEIGHT CAPACITY IS 350 LBS. PER SEAT. WOOD GRAIN LAMINATE TABLES STANDARD WITH EXPOSED PLY EDGE WITH CLEAR COAT. SOLID LAMINATE TABLES STANDARD WITH EXPOSED PLY EDGE PAINTED TO MATCH TOP COLOR.

AMITY

DESIGN: C&H WASHINGTON

49007
OTTOMAN TABLE



TEXTILE LIST PRICE

COM	COL	G 1	G 2	G 3	G 4	G 5	G 6	G 7	G 8	G 9	G 10	G 11
1786	1909	1841	1909	1946	1983	2027	2064	2101	2181	2268	2361	2428

W 28 D 28 H 16.5 (INCHES) COM (YDS) 1.5 COL (SQ FT) 30

ORDER OPTIONS: LAMINATE TOP, POWDER-COAT LEGS

49008
OTTOMAN

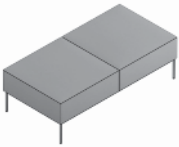


1328	1526	1421	1526	1588	1650	1718	1780	1848	1978	2101	2256	2410
------	------	------	------	------	------	------	------	------	------	------	------	------

W 28 D 28 H 16.5 (INCHES) COM (YDS) 2.5 COL (SQ FT) 50

ORDER OPTIONS: POWDER-COAT LEGS

49009
TWO SEAT BENCH

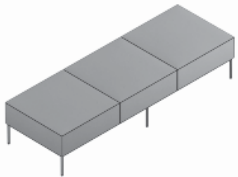


2286	2515	2343	2515	2620	2725	2824	2929	3035	3238	3430	3702	3893
------	------	------	------	------	------	------	------	------	------	------	------	------

W 56 D 28 H 16.5 (INCHES) COM (YDS) 4 COL (SQ FT) 80

ORDER OPTIONS: POWDER-COAT LEGS

49010
THREE SEAT BENCH

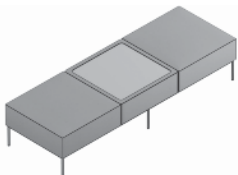


3090	3424	3208	3424	3547	3671	3795	3924	4048	4313	4573	4820	5129
------	------	------	------	------	------	------	------	------	------	------	------	------

W 84 D 28 H 16.5 (INCHES) COM (YDS) 5 COL (SQ FT) 100

ORDER OPTIONS: POWDER-COAT LEGS

49012
BENCH/OTTOMAN/BENCH



3331	3634	3430	3634	3763	3887	4017	4147	4276	4529	4789	5062	5376
------	------	------	------	------	------	------	------	------	------	------	------	------

W 84 D 28 H 16.5 (INCHES) COM (YDS) 5 COL (SQ FT) 100

ORDER OPTIONS: LAMINATE TOP, POWDER-COAT LEGS

COLLABORATIVE LOUNGE, BENCHES AND TABLES

CLICK FOR : [CONSTRUCTION DETAILS](#), [SURFACES](#), [TEXTILES](#), [GRADED-IN TEXTILE DATA BASE](#), [WARRANTY](#), [FREIGHT](#)

SEATING AND TABLES FEATURE FULL METAL POWDER-COAT BASES IN A CHOICE OF THREE STANDARD FINISHES. PREMIUM POWDER-COAT FINISHES ARE AVAILABLE ON BASES FOR UPCHARGE. WEIGHT CAPACITY IS 350 LBS. PER SEAT. WOOD GRAIN LAMINATE TABLES STANDARD WITH EXPOSED PLY EDGE WITH CLEARCOAT. SOLID LAMINATE TABLES STANDARD WITH EXPOSED PLY EDGE PAINTED TO MATCH TOP COLOR.

AMITY

DESIGN: C&H WASHINGTON

LIST PRICE

LAMINATE (L/EE)
WOOD LAMINATE WITH
EXPOSED CLEAR COAT EDGE

LAMINATE (L/PE)
SOLID LAMINATE COLOR WITH
PAINTED EDGE

49020
SQUARE COFFEE TABLE



1887

1887

W 42 D 42 H 15 (INCHES)

ORDER OPTIONS: LAMINATE TOP, POWDER-COAT LEGS

SOLID SURFACE TOP AVAILABLE. ADD \$1000 LIST. **WILL ADD 1/2" TO HEIGHT

49021
ROUND COFFEE TABLE



1823

1823

W 42 D 42 H 15 (INCHES)

ORDER OPTIONS: LAMINATE TOP, POWDER-COAT LEGS

SOLID SURFACE TOP AVAILABLE. ADD \$1000 LIST. **WILL ADD 1/2" TO HEIGHT

49022
SQUARE END TABLE



1479

1479

W 22 D 22 H 19.75 (INCHES)

ORDER OPTIONS: LAMINATE TOP, POWDER-COAT LEGS

SOLID SURFACE TOP AVAILABLE. ADD \$300 LIST. **WILL ADD 1/2" TO HEIGHT

49024
SQUARE END TABLE TALL



1557

1557

W 19 D 19 H 22.5 (INCHES)

ORDER OPTIONS: LAMINATE TOP, POWDER-COAT LEGS

SOLID SURFACE TOP AVAILABLE. ADD \$300 LIST. **WILL ADD 1/2" TO HEIGHT

49023
ROUND END TABLE



1479

1479

W 20 D 20 H 19.75 (INCHES)

ORDER OPTIONS: LAMINATE TOP, POWDER-COAT LEGS

SOLID SURFACE TOP AVAILABLE. ADD \$300 LIST. **WILL ADD 1/2" TO HEIGHT