

# COLLABORATIVE LOUNGE, BENCHES AND TABLES

CLICK FOR : [CONSTRUCTION DETAILS](#), [SURFACES](#), [TEXTILES](#), [GRADED-IN TEXTILE DATABASE](#), [WARRANTY](#), [FREIGHT](#)

## AMITY

DESIGN: C&H WASHINGTON

### ORDER OPTIONS



SEATING AND TABLES FEATURE FULL METAL POWDER-COAT BASES IN A CHOICE OF THREE STANDARD FINISHES. PREMIUM POWDER-COAT FINISHES ARE AVAILABLE ON BASES FOR UPCHARGE. WEIGHT CAPACITY IS 350 LBS. PER SEAT. WOOD GRAIN LAMINATE TABLES STANDARD WITH EXPOSED PLY EDGE WITH CLEAR COAT. SOLID LAMINATE TABLES STANDARD WITH EXPOSED PLY EDGE PAINTED TO MATCH TOP COLOR.

### POWDER-COAT FINISH LEGS



ADD \$0 LIST

SPECIFY: COLOR NAME

METAL LEGS ARE AVAILABLE WITH A CHOICE OF THREE STANDARD POWDER-COAT FINISHES. PREMIUM POWDER-COAT FINISHES ARE AVAILABLE FOR UPCHARGE.



PC4 SILVER  
IN STOCK



PC5 CHROME



PC6 RAVEN

### TABLE TOP LAMINATE OPTIONS



ADD \$0 LIST, OTHER LAMINATES AVAILABLE , CONTACT [CSR@EKOCONTRACT.COM](mailto:CSR@EKOCONTRACT.COM) FOR PRICING.

SPECIFY: BY MODEL NUMBER LISTED IN PRICE LIST

LAMINATE TABLE TOPS ARE AVAILABLE IN:



DESIGNER WHITE



DOVE GRAY



FUSION MAPLE



MONTICELLO MAPLE



MONTANA WALNUT

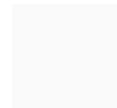
OTHER STANDARD OPTIONS INCLUDE SLATE GREY, HUNTINGTON MAPLE, PALISADES OAK, AIMTO SAVATRE, LEAVE LIKATRE, ABSOLUTE ACAJOU AND TRYTOO SAVATRE AND CAN FOUND ONLINE. LAMINATE TABLE TOPS, SPECIFY:

L/EE - TABLES STANDARD WITH EXPOSED PLY EDGE FINISHED IN CLEAR COAT.

L/PE - TABLES STANDARD WITH PAINTED EDGE TO MATCH TOP COLOR.

ALL TABLE TOPS STANDARD WITH HORIZONTAL GRAIN DIRECTION.

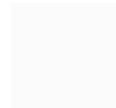
### TABLE TOP SOLID SURFACE OPTIONS



BRIGHT WHITE BW010



ONYX ON095



PEARL SP011

### GANGING DEVICE

ADD \$70 LIST, SPECIFY: AG

# COLLABORATIVE LOUNGE, BENCHES AND TABLES

CLICK FOR : [CONSTRUCTION DETAILS](#), [SURFACES](#), [TEXTILES](#), [GRADED-IN TEXTILE DATA BASE](#), [WARRANTY](#), [FREIGHT](#)

SEATING AND TABLES FEATURE FULL METAL POWDER-COAT BASES IN A CHOICE OF THREE STANDARD FINISHES. PREMIUM POWDER-COAT FINISHES ARE AVAILABLE ON BASES FOR UPCHARGE. WEIGHT CAPACITY IS 350 LBS. PER SEAT. WOOD GRAIN LAMINATE TABLES STANDARD WITH EXPOSED PLY EDGE WITH CLEAR COAT. SOLID LAMINATE TABLES STANDARD WITH EXPOSED PLY EDGE PAINTED TO MATCH TOP COLOR.

## AMITY

DESIGN: C&H WASHINGTON

**49000**  
GUEST CHAIR



TEXTILE LIST PRICE

COM	COL	G 1	G 2	G 3	G 4	G 5	G 6	G 7	G 8	G 9	G 10	G 11
1972	2195	2046	2195	2287	2380	2472	2565	2658	2843	3029	3214	3400

W 25 D 25 H 34.5 SH 18.5 AH 25.5-27.5 (INCHES) COM (YDS) 3.5 COL (SQ FT) 70

ORDER OPTIONS: POWDER-COAT LEGS

**49001**  
LOUNGE CHAIR



2095	2392	2176	2392	2522	2651	2787	2918	3053	3319	3579	3844	4141
------	------	------	------	------	------	------	------	------	------	------	------	------

W 31 D 28 H 35 SH 17.5 AH 27-28 (INCHES) COM (YDS) 5 COL (SQ FT) 100

ORDER OPTIONS: POWDER-COAT LEGS

**49002**  
LOVESEAT



3084	3455	3152	3455	3647	3832	4018	4225	4419	4815	5185	5562	5964
------	------	------	------	------	------	------	------	------	------	------	------	------

W 56 D 28 H 35 SH 17.5 AH 27-28 (INCHES) COM (YDS) 7 COL (SQ FT) 140

ORDER OPTIONS: POWDER-COAT LEGS

**49003**  
SOFA



4073	4604	4221	4604	4820	5062	5309	5556	5803	6242	6737	7231	7657
------	------	------	------	------	------	------	------	------	------	------	------	------

W 84 D 28 H 35 SH 17.5 AH 27-28 (INCHES) COM (YDS) 8.5 COL (SQ FT) 170

ORDER OPTIONS: POWDER-COAT LEGS

**49005**  
ARMLESS LOUNGE CHAIR



1848	2095	1922	2095	2195	2306	2411	2516	2627	2837	3060	3276	3523
------	------	------	------	------	------	------	------	------	------	------	------	------

W 28 D 28 H 35 SH 17.5 (INCHES) COM (YDS) 3.5 COL (SQ FT) 70

ORDER OPTIONS: POWDER-COAT LEGS

**49006**  
CORNER LOUNGE CHAIR



1972	2318	2101	2318	2460	2590	2719	2843	2998	3245	3523	3800	4073
------	------	------	------	------	------	------	------	------	------	------	------	------

W 28 D 28 H 35 SH 17.5 (INCHES) COM (YDS) 5 COL (SQ FT) 100

ORDER OPTIONS: POWDER-COAT LEGS

UPHOLSTERY DIRECTION MUST BE SPECIFIED ON CORNER UNITS WHEN PATTERNED FABRICS ARE SPECIFIED. IN THE ABSENCE OF SPECIFIC INSTRUCTIONS, EKO RESERVES THE RIGHT TO UPHOLSTER UNITS AT OUR DISCRETION.

# COLLABORATIVE LOUNGE, BENCHES AND TABLES

CLICK FOR : [CONSTRUCTION DETAILS](#), [SURFACES](#), [TEXTILES](#), [GRADED-IN TEXTILE DATA BASE](#), [WARRANTY](#), [FREIGHT](#)

SEATING AND TABLES FEATURE FULL METAL POWDER-COAT BASES IN A CHOICE OF THREE STANDARD FINISHES. PREMIUM POWDER-COAT FINISHES ARE AVAILABLE ON BASES FOR UPCHARGE. WEIGHT CAPACITY IS 350 LBS. PER SEAT. WOOD GRAIN LAMINATE TABLES STANDARD WITH EXPOSED PLY EDGE WITH CLEAR COAT. SOLID LAMINATE TABLES STANDARD WITH EXPOSED PLY EDGE PAINTED TO MATCH TOP COLOR.

## AMITY

DESIGN: C&H WASHINGTON

### 49004R

RIGHT ARM LOVESEAT



TEXTILE LIST PRICE

COM	COL	G 1	G 2	G 3	G 4	G 5	G 6	G 7	G 8	G 9	G 10	G 11
2898	3269	2966	3269	3461	3646	3832	4035	4234	4629	4999	5376	5778

W 56 D 28 H 35 SH 17.5 AH 27-28 (INCHES) COM (YDS) 6.5 COL (SQ FT) 123

ORDER OPTIONS: POWDER-COAT LEGS

### 49004L

LEFT ARM LOVESEAT



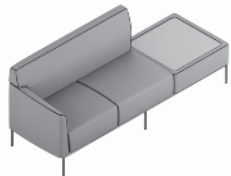
2898	3269	2966	3269	3461	3646	3832	4035	4234	4629	4999	5376	5778
------	------	------	------	------	------	------	------	------	------	------	------	------

W 56 D 28 H 35 SH 17.5 AH 27-28 (INCHES) COM (YDS) 6.5 COL (SQ FT) 123

ORDER OPTIONS: POWDER-COAT LEGS

### 49011R

RIGHT ARM LOVESEAT/OTTOMAN



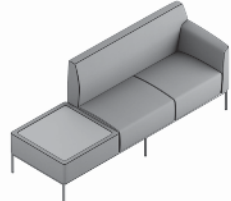
3949	4320	4005	4320	4525	4722	4938	5123	5322	5723	6125	6545	6984
------	------	------	------	------	------	------	------	------	------	------	------	------

W 84 D 28 H 35 SH 17.5 AH 27-28 (INCHES) COM (YDS) 7.5 COL (SQ FT) 150

ORDER OPTIONS: LAMINATE \$0 OR SOLID SURFACE +\$500 TOP, POWDER-COAT LEGS

### 49011L

LEFT ARM LOVESEAT/OTTOMAN



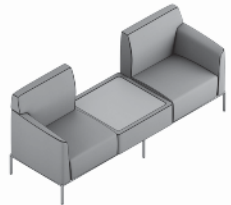
3949	4320	4005	4320	4525	4722	4938	5123	5322	5723	6125	6545	6984
------	------	------	------	------	------	------	------	------	------	------	------	------

W 84 D 28 H 35 SH 17.5 AH 27-28 (INCHES) COM (YDS) 7.5 COL (SQ FT) 150

ORDER OPTIONS: LAMINATE \$0 OR SOLID SURFACE +\$500 TOP, POWDER-COAT LEGS

### 49013

CHAIR/OTTOMAN/CHAIR



3949	4320	4005	4320	4525	4722	4938	5123	5322	5723	6125	6545	6984
------	------	------	------	------	------	------	------	------	------	------	------	------

W 84 D 28 H 35 SH 17.5 AH 27-28 (INCHES) COM (YDS) 7.5 COL (SQ FT) 150

ORDER OPTIONS: LAMINATE \$0 OR SOLID SURFACE +\$500 TOP, POWDER-COAT LEGS

# COLLABORATIVE LOUNGE, BENCHES AND TABLES

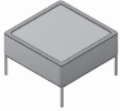
CLICK FOR : [CONSTRUCTION DETAILS](#), [SURFACES](#), [TEXTILES](#), [GRADED-IN TEXTILE DATA BASE](#), [WARRANTY](#), [FREIGHT](#)

SEATING AND TABLES FEATURE FULL METAL POWDER-COAT BASES IN A CHOICE OF THREE STANDARD FINISHES. PREMIUM POWDER-COAT FINISHES ARE AVAILABLE ON BASES FOR UPCHARGE. WEIGHT CAPACITY IS 350 LBS. PER SEAT. WOOD GRAIN LAMINATE TABLES STANDARD WITH EXPOSED PLY EDGE WITH CLEAR COAT. SOLID LAMINATE TABLES STANDARD WITH EXPOSED PLY EDGE PAINTED TO MATCH TOP COLOR.

## AMITY

DESIGN: C&H WASHINGTON

**49007**  
OTTOMAN TABLE



TEXTILE LIST PRICE

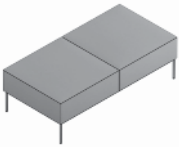
COM	COL	G 1	G 2	G 3	G 4	G 5	G 6	G 7	G 8	G 9	G 10	G 11
1786	1902	1838	1902	1937	1972	2013	2048	2083	2159	2241	2328	2392
W 28 D 28 H 16.5 (INCHES)						COM (YDS) 1.5 COL (SQ FT) 30						
ORDER OPTIONS: LAMINATE \$0 OR SOLID SURFACE +\$500 TOP, POWDER-COAT LEGS												

**49008**  
OTTOMAN



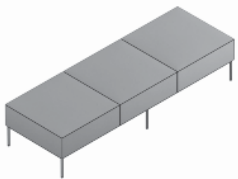
1328	1515	1416	1515	1573	1632	1696	1754	1818	1941	2057	2203	2349
W 28 D 28 H 16.5 (INCHES)						COM (YDS) 2.5 COL (SQ FT) 50						
ORDER OPTIONS: POWDER-COAT LEGS												

**49009**  
TWO SEAT BENCH



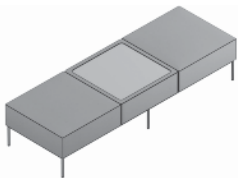
2286	2502	2339	2502	2601	2700	2793	2892	2992	3184	3365	3621	3802
W 56 D 28 H 16.5 (INCHES)						COM (YDS) 4 COL (SQ FT) 80						
ORDER OPTIONS: POWDER-COAT LEGS												

**49010**  
THREE SEAT BENCH



3090	3405	3201	3405	3521	3638	3755	3877	3994	4244	4489	4722	5014
W 84 D 28 H 16.5 (INCHES)						COM (YDS) 5 COL (SQ FT) 100						
ORDER OPTIONS: POWDER-COAT LEGS												

**49012**  
BENCH/OTTOMAN/BENCH



3331	3617	3425	3617	3739	3856	3970	4101	4223	4462	4707	4964	5261
W 84 D 28 H 16.5 (INCHES)						COM (YDS) 5 COL (SQ FT) 100						
ORDER OPTIONS: LAMINATE \$0 OR SOLID SURFACE +\$500 TOP, POWDER-COAT LEGS												

# COLLABORATIVE LOUNGE, BENCHES AND TABLES

CLICK FOR : [CONSTRUCTION DETAILS](#), [SURFACES](#), [TEXTILES](#), [GRADED-IN TEXTILE DATA BASE](#), [WARRANTY](#), [FREIGHT](#)

SEATING AND TABLES FEATURE FULL METAL POWDER-COAT BASES IN A CHOICE OF THREE STANDARD FINISHES. PREMIUM POWDER-COAT FINISHES ARE AVAILABLE ON BASES FOR UPCHARGE. WEIGHT CAPACITY IS 350 LBS. PER SEAT. LAMINATE TABLES STANDARD WITH EXPOSED PLY EDGE WITH CLEARCOAT OR WITH EDGE PAINTED TO MATCH TOP COLOR.

## AMITY

DESIGN: C&H WASHINGTON

LIST PRICE

**LAMINATE (L/EE)**  
LAMINATE WITH EXPOSED  
CLEAR COAT EDGE

**LAMINATE (L/PE)**  
LAMINATE  
WITH PAINTED EDGE

**49020**  
SQUARE COFFEE TABLE



1887

1887

W 42 D 42 H 15 (INCHES)

ORDER OPTIONS: LAMINATE TOP, POWDER-COAT LEGS

SOLID SURFACE TOP AVAILABLE. ADD \$1000 LIST. \*\*WILL ADD 1/2" TO HEIGHT

**OTHER LAMINATES AVAILABLE, CONTACT [CSR@EKOCONTRCT.COM](mailto:CSR@EKOCONTRCT.COM) FOR PRICING  
PRICES SHOWN ARE FOR STANDARD LAMINATE OPTIONS.**

**49021**  
ROUND COFFEE TABLE



1823

1823

W 42 D 42 H 15 (INCHES)

ORDER OPTIONS: LAMINATE TOP, POWDER-COAT LEGS

SOLID SURFACE TOP AVAILABLE. ADD \$1000 LIST. \*\*WILL ADD 1/2" TO HEIGHT

**49022**  
SQUARE END TABLE



1479

1479

W 22 D 22 H 19.75 (INCHES)

ORDER OPTIONS: LAMINATE TOP, POWDER-COAT LEGS

SOLID SURFACE TOP AVAILABLE. ADD \$500 LIST. \*\*WILL ADD 1/2" TO HEIGHT

**49024**  
SQUARE END TABLE TALL



1557

1557

W 19 D 19 H 22.5 (INCHES)

ORDER OPTIONS: LAMINATE TOP, POWDER-COAT LEGS

SOLID SURFACE TOP AVAILABLE. ADD \$500 LIST. \*\*WILL ADD 1/2" TO HEIGHT

**49023**  
ROUND END TABLE



1479

1479

W 20 D 20 H 19.75 (INCHES)

ORDER OPTIONS: LAMINATE TOP, POWDER-COAT LEGS

SOLID SURFACE TOP AVAILABLE. ADD \$500 LIST. \*\*WILL ADD 1/2" TO HEIGHT