

# LOUNGE AND MODULAR

SINUOUS SEAT SPRING SUSPENSION. CUSHIONS VELCROED INPLACE.  
WEIGHT CAPACITY IS 350 LBS. PER SEAT.

2023 NEW & NEW LEATHER LIST PRICES

## neos

DESIGN: IDI

**N1-RL**  
CLUB CHAIR



TEXTILE LIST PRICE

COM	COL	G 1	G 2	G 3	G 4	G 5	G 6	G 7	G 8	G 9	G 10	G 11
1695	1895	1695	1795	1895	1995	2095	2195	2295	2555	2755	2955	3195

W 28 D 32 H 30 SH 19 AH 7 (INCHES)

OVERALL COM (YDS) 5.75 (SEAT/BACK 3 , REMAINDER 3)

LEATHER PRICE	G 1	G 2	G 3
	L	L	L
	3495	3795	3895

COM	COL	G 1	G 2	G 3	G 4	G 5	G 6	G 7	G 8	G 9	G 10	G 11
2495	2855	2495	2680	2855	2995	3195	3395	3595	3795	4195	4595	4895

W 50 D 32 H 30 SH 19 AH 7 (INCHES)

OVERALL COM (YDS) 8.5 (SEAT/BACK 5, REMAINDER 4)

LEATHER PRICE	G 1	G 2	G 3
	L	L	L
	5395	5695	5895

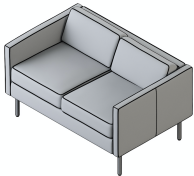
COM	COL	G 1	G 2	G 3	G 4	G 5	G 6	G 7	G 8	G 9	G 10	G 11
3295	3695	3295	3495	3695	3895	4095	4295	4495	4995	5395	5795	6195

W 72 D 32 H 30 SH 19 AH 7 (INCHES)

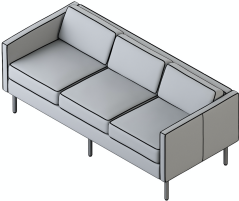
OVERALL COM (YDS) 10.5 (SEAT/BACK 6.25, REMAINDER 5)

LEATHER PRICE	G 1	G 2	G 3
	L	L	L
	6995	7195	7395





**N2-RL**  
LOVESEAT



**N3-RL**  
SOFA



### OPTIONS

Leg Option	USB Power	Fabric/Grade	Tablet (if applicable)
PC1 Milk Gloss PC2 Charcoal Gloss PC4 Silver PC5 Chrome PC6 Raven PC20 Flat Black	-- No Selection <b>RG \$175 (right side as seated location)</b> VR1/RS black power unit VR2/RS white power unit  <b>LF \$175 (left side as seated location)</b> VR1/LS black power unit VR2/LS white power unit  <b>ex:</b> USB power, LF/VR1/LS with NTL tablet left handed     <b>ex:</b> USB power, LF/VR1/LS on armless unit	<b>Upholstery Selection (Seat/Back)</b> Select from standards or COM  <b>Upholstery Selection (Remainder)</b> Select from standards or COM  <b>Higher of the 2 Grades</b> This option must be selected to calculate pricing. Ex: G1 seat selection with G2 Remainder selection, select G2 in higher off the 2 grades.  <b>MFD-2 (multifabric) \$100</b> Combine two COM/COV/COL or fabrics in same grade  <b>MFD-3 (multifabric) \$125</b> Combine three COM/COV/COL or fabrics in same grade	<b>NTR (right handed) \$400</b> <b>NTL (left handed) \$400</b> <b>then select either</b> veneer (VEN) or laminate (LAM) see digital catalog for options     NTR RIGHT HANDED      NTL LEFT HANDED

HOW TO ORDER  
SPECIFY: Leg Finish Option | Ganging Option (if applicable) | USB Power | Fabric/Grade | Tablet (if applicable)

### MODEL NUMBER

Base Finish	USB Power	Ganging Option	Fabric/Grade	Tablet
PC4 Silver	RG/VR1/RS	--No Selection (not applicable)	Seat/Back: G1 Dillon Black, Remainder: G2 Taye Granite, Higher off the 2 grades = G2	NTR/VEN/P20 Flat Black

# LOUNGE AND MODULAR

SINUOUS SEAT SPRING SUSPENSION. CUSHIONS VELCROED INPLACE.  
WEIGHT CAPACITY IS 350 LBS. PER SEAT.

2023 NEW & NEW LEATHER LIST PRICES

## neos

DESIGN: IDI

### N2-0A

ARMLESS LOVESEAT



TEXTILE LIST PRICE

COM	COL	G 1	G 2	G 3	G 4	G 5	G 6	G 7	G 8	G 9	G 10	G 11
2195	2395	2195	2295	2395	2595	2695	2795	2895	3195	3495	3795	3995

W 44 D 32 H 30 SH 19 (INCHES)

OVERALL COM (YDS) 6.5 (SEAT/BACK 3.5, REMAINDER 2.75)

LEATHER PRICE	1	2	3
	L	L	L
	4295	4495	4595

COM	COL	G 1	G 2	G 3	G 4	G 5	G 6	G 7	G 8	G 9	G 10	G 11
2395	2595	2395	2495	2595	2695	2795	2995	3195	3395	3695	3995	4195

W 47 D 32 H 30 SH 19 AH 7 (INCHES)

OVERALL COM (YDS) 7 (SEAT/BACK 3.5, REMAINDER 3.5)

LEATHER PRICE	1	2	3
	L	L	L
	4595	4795	4995

COM	COL	G 1	G 2	G 3	G 4	G 5	G 6	G 7	G 8	G 9	G 10	G 11
2395	2595	2395	2495	2595	2695	2795	2995	3195	3395	3695	3995	4195

W 47 D 32 H 30 SH 19 AH 7 (INCHES)

OVERALL COM (YDS) 7 (SEAT/BACK 3.5, REMAINDER 3.5)

LEATHER PRICE	1	2	3
	L	L	L
	4595	4795	4995

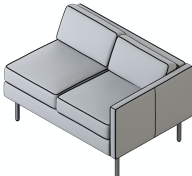
### N2-R

RIGHT ARM LOVESEAT







### N2-L

LEFT ARM LOVESEAT



#### OPTIONS

Leg Option	USB Power	Fabric/Grade	Tablet (if applicable)
PC1 Milk Gloss PC2 Charcoal Gloss PC4 Silver PC5 Chrome PC6 Raven PC20 Flat Black	-- No Selection <b>RG \$175 (right side as seated location)</b> VR1/RS black power unit VR2/RS white power unit  <b>LF \$175 (left side as seated location)</b> VR1/LS black power unit VR2/LS white power unit  <b>ex:</b> USB power, LF/VR1/LS with NTL tablet left handed	<b>Upholstery Selection (Seat/Back)</b> Select from standards or COM  <b>Upholstery Selection (Remainder)</b> Select from standards or COM  <b>Higher of the 2 Grades</b> This option must be selected to calculate pricing. Ex: G1 seat selection with G2 Remainder selection, select G2 in higher off the 2 grades.  <b>MFD-2 (multifabric) \$100</b> Combine two COM/COV/COL or fabrics in same grade  <b>MFD-3 (multifabric) \$125</b> Combine three COM/COV/COL or fabrics in same grade	<b>NTR (right handed) \$400</b> <b>NTL (left handed) \$400</b> <b>then select either</b> veneer (VEN) or laminate (LAM) see digital catalog for options   NTR RIGHT HANDED  NTL LEFT HANDED
Ganging Option (if applicable)  -- No Selection <b>GC \$60</b> Ganging connector connects armless to armless	   <b>ex:</b> USB power, LF/VR1/LS on armless unit		

#### HOW TO ORDER

SPECIFY: Leg Finish Option | Ganging Option (if applicable) | USB Power | Fabric/Grade | Tablet (if applicable)

#### MODEL NUMBER

N2-R				
Base Finish	USB Power	Ganging Option	Fabric/Grade	Tablet
PC4 Silver	RG/VR1/RS	GC	Seat/Back: G1 Dillon Black, Remainder: G2 Taye Granite, Higher off the 2 grades = G2	NTR/VEN/P20 Flat Black

# LOUNGE AND MODULAR

SINUOUS SEAT SPRING SUSPENSION. CUSHIONS VELCROED INPLACE.  
WEIGHT CAPACITY IS 350 LBS. PER SEAT.

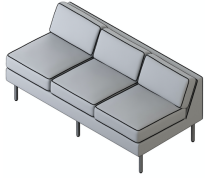
2023 NEW & NEW LEATHER LIST PRICES

## NEOS

DESIGN: IDI

### N3-0A

ARMLESS SOFA



TEXTILE LIST PRICE

COM	COL	G 1	G 2	G 3	G 4	G 5	G 6	G 7	G 8	G 9	G 10	G 11
2995	3395	2995	3195	3395	3595	3795	3995	4195	4495	4795	5195	5595

W 66 D 32 H 30 SH 19 (INCHES)

OVERALL COM (YDS) 9.25 (SEAT/BACK 6.25, REMAINDER 3)

LEATHER PRICE	1	2	3
	L	L	L
	5995	6395	6695

COM	COL	G 1	G 2	G 3	G 4	G 5	G 6	G 7	G 8	G 9	G 10	G 11
3095	3495	3095	3295	3495	3695	3895	4095	4295	4695	5095	5495	5895

W 69 D 32 H 30 SH 19 AH 7 (INCHES)

OVERALL COM (YDS) 9.75 (SEAT/BACK 6.25, REMAINDER 3.5)

LEATHER PRICE	1	2	3
	L	L	L
	6395	6695	6995

COM	COL	G 1	G 2	G 3	G 4	G 5	G 6	G 7	G 8	G 9	G 10	G 11
3095	3495	3095	3295	3495	3695	3895	4095	4295	4695	5095	5495	5895

W 69 D 32 H 30 SH 19 AH 7 (INCHES)

OVERALL COM (YDS) 9.75 (SEAT/BACK 6.25, REMAINDER 3.5)

LEATHER PRICE	1	2	3
	L	L	L
	6395	6695	6995

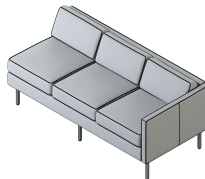
### N3-R

RIGHT ARM SOFA







### N3-L

LEFT ARM SOFA



#### OPTIONS

Leg Option	USB Power	Fabric/Grade	Tablet (if applicable)
PC1 Milk Gloss PC2 Charcoal Gloss PC4 Silver PC5 Chrome PC6 Raven PC20 Flat Black	-- No Selection <b>RG \$175 (right side as seated location)</b> VR1/RS black power unit VR2/RS white power unit  <b>LF \$175 (left side as seated location)</b> VR1/LS black power unit VR2/LS white power unit  <b>ex:</b> USB power, LF/VR1/LS with NTL tablet left handed	<b>Upholstery Selection (Seat/Back)</b> Select from standards or COM  <b>Upholstery Selection (Remainder)</b> Select from standards or COM  <b>Higher of the 2 Grades</b> This option must be selected to calculate pricing. Ex: G1 seat selection with G2 Remainder selection, select G2 in higher off the 2 grades.  <b>MFD-2 (multifabric) \$100</b> Combine two COM/COV/COL or fabrics in same grade  <b>MFD-3 (multifabric) \$125</b> Combine three COM/COV/COL or fabrics in same grade	<b>NTR (right handed) \$400</b> <b>NTL (left handed) \$400</b> <b>then select either</b> venerer (VEN) or laminate (LAM) see digital catalog for options   NTR RIGHT HANDED  NTL LEFT HANDED
Ganging Option (if applicable)  -- No Selection <b>GC \$60</b> Ganging connector connects armless to armless	   <b>ex:</b> USB power, LF/VR1/LS on armless unit		

#### HOW TO ORDER

SPECIFY: Leg Finish Option | Ganging Option (if applicable) | USB Power | Fabric/Grade | Tablet (if applicable)

#### MODEL NUMBER

Base Finish	USB Power	Ganging Option	Fabric/Grade	Tablet
PC4 Silver	RG/VR1/RS	GC	Seat/Back:G1 Dillon Black, Remainder: G2 Taye Granite, Higher off the 2 grades = G2	NTR/VEN/P20 Flat Black