

# COLLABORATIVE BENCHES AND TABLES

CLICK FOR : [CONSTRUCTION DETAILS](#), [SURFACES](#), [TEXTILES](#), [GRADED-IN TEXTILE DATA BASE](#), [WARRANTY](#), [FREIGHT](#)

## PICNIC

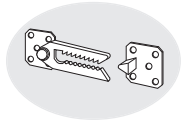
DESIGN: 5D DESIGN

### ORDER OPTIONS



BENCHES STANDARD WITH FOUR LOCKING CASTERS. PLASTIC LEG OPTION AVAILABLE FOR MAKING STATIC MODULAR CONFIGURATIONS. SUPPORTS 350 LBS. PER SEAT. TABLES FEATURE CHOICE OF WOOD, TEXTURED OR PREMIUM 3D LAMINATE TOPS WITH EUROPEAN BEECH WOOD BASES IN STANDARD WOOD FINISH COLORS. WOOD BASES ARE ALSO AVAILABLE IN PAINT COLORS FOR UPCHARGE. TABLES ARE STANDARD WITH POWER UNIT.

### GANGING CONNECTOR

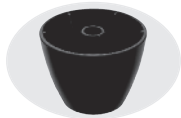


ADD \$85 LIST (SET OF 1)

SPECIFY: LC

OPTIONAL SET INCLUDES ONE GANGING BRACKET SET. ADD LC TO ITEMS THAT GANG. ONLY ADD LC WHEN ITEMS CONNECT. DO NOT ADD TO END RUN.

### PLASTIC BENCH LEGS



NO UPCHARGE

SPECIFY: PL

OPTIONAL BLACK PLASTIC LEGS AVAILABLE FOR CREATING STATIC MODULAR CONFIGURATIONS.

### PAINT COLOR TABLE BASES



ADD \$100 LIST

SPECIFY: COLOR NAME

WOOD TABLE BASES ARE STANDARD WITH WOOD FINISH COLORS. BASES ARE AVAILABLE WITH PAINT FINISHES FOR UPCHARGE.

### AXIL Z POWER/DATA CENTER



NO UPCHARGE, STANDARD ON TABLES (1 UNIT PER TABLE)

SPECIFY: GWT (GLOSS WHITE) GBK (GLOSS BLACK)

FLAT SURFACES HAVE BEEN OFF-LIMITS WHEN IT CAME TO POWER AND DATA UNTIL NOW. AXIL Z IS A FLAT MOUNT POWER/DATA CENTER, FEATURING PATENTED SPILL-PROOF OUTLETS, THAT DELIVERS UL LISTED POWER/DATA TO ANY FLAT WORKSURFACE. CONSTRUCTED OUT OF ANODIZED ALUMINUM WITH A PAINTED STEEL FACEPLATE. POWER UNIT HAS 2 USB CHARGERS AND 2 POWER RECEPTACLES. 15 AMP CORD, UL LISTING #E116699.

TO ORDER TABLE WITHOUT POWER DELETE /FMPO FROM MODEL NUMBER AND DEDUCT \$680 LIST.

# COLLABORATIVE BENCHES AND TABLES

CLICK FOR : [CONSTRUCTION DETAILS](#), [SURFACES](#), [TEXTILES](#), [GRADED-IN TEXTILE DATA BASE](#), [WARRANTY](#), [FREIGHT](#)

BENCHES STANDARD WITH FOUR LOCKING CASTERS. PLASTIC LEG OPTION AVAILABLE FOR MAKING STATIC MODULAR CONFIGURATIONS. SUPPORTS 350 LBS. PER SEAT. TABLES FEATURE CHOICE OF WOOD, TEXTURED OR PREMIUM 3D LAMINATE TOPS WITH EUROPEAN BEECH WOOD BASES IN STANDARD WOOD FINISH COLORS. WOOD BASES ARE ALSO AVAILABLE IN PAINT COLORS FOR UPCHARGE. TABLES ARE STANDARD WITH POWER UNIT.

## PICNIC

DESIGN: 5D DESIGN

TEXTILE LIST PRICE

**20000**  
20-INCH WIDE BENCH



COM	COL	G 1	G 2	G 3	G 4	G 5	G 6	G 7	G 8	G 9	G 10	G 11
669	N/A	761	824	868	929	979	1028	1087	1204	1322	1440	1558
W 20.5 D 21.5 H 18.5 (INCHES)							COM (YDS) 2.5					
ORDER OPTIONS: PLASTIC LEGS												

**20001**  
40-INCH WIDE BENCH



1006	N/A	1036	1152	1229	1332	1422	1504	1606	1804	2008	2206	2409
W 40 D 21.5 H 18.5 (INCHES)							COM (YDS) 2.5					
ORDER OPTIONS: PLASTIC LEGS												

**21001**  
40-INCH WIDE BENCH  
WITH OPEN FRONT



1231	N/A	1271	1380	1458	1562	1650	1729	1831	2029	2233	2436	2634
W 40 D 21.5 H 18.5 (INCHES)							COM (YDS) 4.25					
ORDER OPTIONS: PLASTIC LEGS												

**20002**  
63-INCH WIDE BENCH



1455	N/A	1550	1642	1708	1807	1892	1969	2060	2237	2435	2623	2810
W 63.5 D 21.5 H 18.5 (INCHES)							COM (YDS) 4					
ORDER OPTIONS: PLASTIC LEGS												

**21002**  
63-INCH WIDE BENCH  
WITH OPEN FRONT



1792	N/A	1865	1992	2079	2211	2319	2420	2542	2783	3034	3281	3511
W 63.5 D 21.5 H 18.5 (INCHES)							COM (YDS) 5.25					
ORDER OPTIONS: PLASTIC LEGS												

**20003**  
81-INCH WIDE BENCH



1680	N/A	1769	1875	1997	2069	2162	2253	2366	2591	2810	3035	3266
W 81.5 D 21.5 H 18.5 (INCHES)							COM (YDS) 4.75					
ORDER OPTIONS: PLASTIC LEGS												

# COLLABORATIVE BENCHES AND TABLES

CLICK FOR : [CONSTRUCTION DETAILS](#), [SURFACES](#), [TEXTILES](#), [GRADED-IN TEXTILE DATA BASE](#), [WARRANTY](#), [FREIGHT](#)

BENCHES STANDARD WITH FOUR LOCKING CASTERS. PLASTIC LEG OPTION AVAILABLE FOR MAKING STATIC MODULAR CONFIGURATIONS. SUPPORTS 350 LBS. PER SEAT. TABLES FEATURE CHOICE OF WOOD, TEXTURED OR PREMIUM 3D LAMINATE TOPS WITH EUROPEAN BEECH WOOD BASES IN STANDARD WOOD FINISH COLORS. WOOD BASES ARE ALSO AVAILABLE IN PAINT COLORS FOR UPCHARGE. TABLES ARE STANDARD WITH POWER UNIT.

## PICNIC

DESIGN: 5D DESIGN

**21003**  
81-INCH WIDE BENCH  
WITH OPEN FRONT



### TEXTILE LIST PRICE

COM	COL	G 1	G 2	G 3	G 4	G 5	G 6	G 7	G 8	G 9	G 10	G 11
2017	N/A	2170	2315	2429	2577	2703	2820	2976	3266	3559	3854	4149

W 81.5 D 21.5 H 18.5 (INCHES) COM (YDS) 6.25

ORDER OPTIONS: PLASTIC LEGS

**20004**  
90-DEGREE ROUND BENCH



1006	N/A	1036	1152	1229	1332	1422	1504	1606	1804	2008	2206	2409
------	-----	------	------	------	------	------	------	------	------	------	------	------

W 27.25 D 27.25 H 18.5 (INCHES) COM (YDS) 2.25

ORDER OPTIONS: PLASTIC LEGS

*UPHOLSTERY DIRECTION MUST BE SPECIFIED ON CORNER UNITS WHEN PATTERNED FABRICS ARE SPECIFIED. IN THE ABSENCE OF SPECIFIC INSTRUCTIONS, EKO RESERVES THE RIGHT TO UPHOLSTER UNITS AT OUR DISCRETION.*

**20005**  
45-DEGREE ROUND BENCH



737	N/A	811	891	949	1007	1066	1124	1182	1299	1415	1532	1649
-----	-----	-----	-----	-----	------	------	------	------	------	------	------	------

W 23 D 25 H 18.5 (INCHES) COM (YDS) 2

ORDER OPTIONS: PLASTIC LEGS

# COLLABORATIVE BENCHES AND TABLES

CLICK FOR : [CONSTRUCTION DETAILS](#), [SURFACES](#), [TEXTILES](#), [GRADED-IN TEXTILE DATA BASE](#), [WARRANTY](#), [FREIGHT](#)

BENCHES STANDARD WITH FOUR LOCKING CASTERS. PLASTIC LEG OPTION AVAILABLE FOR MAKING STATIC MODULAR CONFIGURATIONS. SUPPORTS 350 LBS. PER SEAT. TABLES FEATURE CHOICE OF WOOD, TEXTURED OR PREMIUM 3D LAMINATE TOPS WITH EUROPEAN BEECH WOOD BASES IN STANDARD WOOD FINISH COLORS. WOOD BASES ARE ALSO AVAILABLE IN PAINT COLORS FOR UPCHARGE. TABLES ARE STANDARD WITH POWER UNIT.

## PICNIC

LIST PRICE

DESIGN: 5D DESIGN

3D LAMINATE SOLID	3D LAMINATE WOOD	3D LAMINATE TEXTURED	3D LAMINATE PREMIUM
-------------------	------------------	----------------------	---------------------

### 20006/FMPO

72-INCH RECTANGULAR TABLE WITH POWER UNIT



6254	6404	6554	6704
------	------	------	------

W 72 D 45.25 H 27.5 (INCHES)

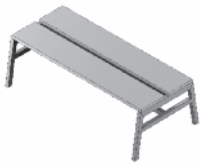
ORDER OPTIONS: PREMIUM PAINT COLOR BASE (ADD \$100 LIST)

*TO ORDER TABLE WITHOUT POWER DELETE /FMPO FROM MODEL NUMBER AND DEDUCT \$680 LIST.*  
SHIPS ASSEMBLED

\*\*\*STANDARD FREIGHT TERMS DO NOT APPLY. FREIGHT QUOTE REQUIRED ON ORDERS UNDER \$50,000 LIST

### 20007/FMPO

90-INCH RECTANGULAR TABLE WITH POWER UNIT



6890	7040	7190	7340
------	------	------	------

W 90 D 45.25 H 27.5 (INCHES)

ORDER OPTIONS: PREMIUM PAINT COLOR BASE (ADD \$100 LIST)

*TO ORDER TABLE WITHOUT POWER DELETE /FMPO FROM MODEL NUMBER AND DEDUCT \$680 LIST.*  
SHIPS ASSEMBLED

\*\*\*STANDARD FREIGHT TERMS DO NOT APPLY. FREIGHT QUOTE REQUIRED ON ORDERS UNDER \$50,000 LIST

### 20008/FMPO

72-INCH RECTANGULAR HIGH TABLE WITH POWER UNIT



6678	6828	6978	7128
------	------	------	------

W 72 D 44 H 42 (INCHES)

ORDER OPTIONS: PREMIUM PAINT COLOR BASE (ADD \$100 LIST)

*TO ORDER TABLE WITHOUT POWER DELETE /FMPO FROM MODEL NUMBER AND DEDUCT \$680 LIST.*  
SHIPS ASSEMBLED

\*\*\*STANDARD FREIGHT TERMS DO NOT APPLY. FREIGHT QUOTE REQUIRED ON ORDERS UNDER \$50,000 LIST

### 20009/FMPO

48-INCH ROUND TABLE WITH POWER UNIT



5406	5556	5706	5856
------	------	------	------

W 56.25 D 56.25 H 27.5 (INCHES)

ORDER OPTIONS: PREMIUM PAINT COLOR BASE (ADD \$100 LIST)

*TO ORDER TABLE WITHOUT POWER DELETE /FMPO FROM MODEL NUMBER AND DEDUCT \$680 LIST.*  
SHIPS ASSEMBLED

\*\*\*STANDARD FREIGHT TERMS DO NOT APPLY. FREIGHT QUOTE REQUIRED ON ORDERS UNDER \$50,000 LIST

### 20010/FMPO

60-INCH ROUND TABLE WITH POWER UNIT



5830	6080	6330	6580
------	------	------	------

W 68.25 D 68.25 H 27.5 (INCHES)

ORDER OPTIONS: PREMIUM PAINT COLOR BASE (ADD \$100 LIST)

*TO ORDER TABLE WITHOUT POWER DELETE /FMPO FROM MODEL NUMBER AND DEDUCT \$680 LIST.*  
SHIPS ASSEMBLED

\*\*\*STANDARD FREIGHT TERMS DO NOT APPLY. FREIGHT QUOTE REQUIRED ON ORDERS UNDER \$50,000 LIST

### 20011/FMPO

72-INCH ROUND TABLE WITH POWER UNIT



7102	7352	7602	7852
------	------	------	------

W 80.25 D 80.25 H 27.5 (INCHES)

ORDER OPTIONS: PREMIUM PAINT COLOR BASE (ADD \$100 LIST)

*TO ORDER TABLE WITHOUT POWER DELETE /FMPO FROM MODEL NUMBER AND DEDUCT \$680 LIST.*  
SHIPS ASSEMBLED

\*\*\*STANDARD FREIGHT TERMS DO NOT APPLY. FREIGHT QUOTE REQUIRED ON ORDERS UNDER \$50,000 LIST